



Global 3000 Service Pack Note Stocktake Report

Author	DCP		
Project	ZI60_000036.doc		
Version	1.0		1 of 4

INTRODUCTION

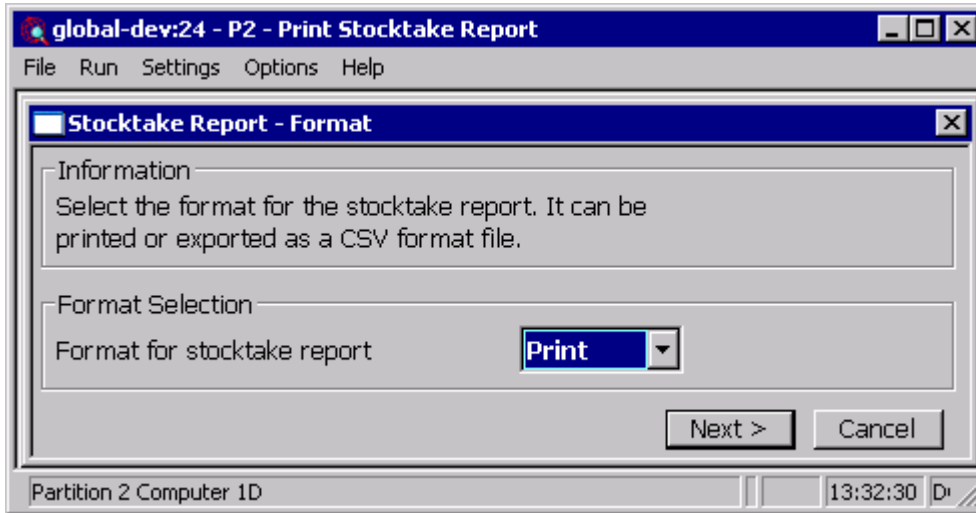
This service pack extends the stocktake report to provide options to print the report in PDF format and to export the report to a CSV format file.

The stocktake report has been extended to include a new report format window, this window provides the option to either print the report (in both standard and PDF format) or to export the report details to a CSV format file.

Please note, printing documents in PDF format requires an up-to-date copy of either PDF_In_The_Box.dll or All_In_The_Box.dll to be present on each GX client used to perform the document generation.

Author	DCP	
Project	ZI60_000036.doc	
Version	1.0	2 of 4

Stocktake Report Options Window



This window appears when you complete your responses in the Stocktake Report window.

Purpose This window enables you to specify the format in which the stocktake report is produced.

The prompts are:

Format Select the output format for the report. The options are:

- **Print.** The report is printed. You can select either a PDF format report or a standard report within the print options window.
- **Export.** The report is exported (in CSV format).

Note When the report is exported a CSV file is created which consists of a single line per product/location or batch for batch tracked products. Each line is terminated with either #0D or #0D0A depending on the operating system.

Printing in PDF format requires an up-to-date copy of PDF_In_The_Box.dll or All_In_The_Box.dll to be present on each GX client used to perform the invoice generation.

On completion Depending on the format selected you are presented with either the print or export options.

Author	DCP		
Project	Z160_000036.doc		
Version	1.0		3 of 4

CSV File Layout

When the report is not exported in bin location sequence; the records in the CSV file consists of an initial line of column titles followed by detail lines. The following list shows which items are included in each detail line and the order in which they appear:

- Location code (multi-location systems only),
- Product code,
- Product description,
- Batch number (blank if product is not batch tracked),
- Batch reference (blank if product is not batch tracked),
- Serial number (see note below),
- Recorded quantity (included depending on system parameters),
- Unit for recorded quantity (included depending on system parameters),
- Counted quantity (exported as a blank field to allow use in spreadsheets),
- Unit for counted quantity (exported as a blank field to allow use in spreadsheets),
- Recorded quantity (included depending on system parameters),
- Counted value (exported as a blank field to allow use in spreadsheets),
- Bin location,

Note: If a product is serialised, individual serial numbers are exported as separate lines in the position shown above.

When the report is exported in bin location sequence; the records in the CSV file consists of an initial line of column titles followed by detail lines. The following list shows which items are included in each detail line and the order in which they appear:

- Location code (multi-location systems only),
- Bin location,
- Product code,
- Product description,
- Batch number (blank if product is not batch tracked),
- Batch reference (blank if product is not batch tracked),
- Serial number (see note below),
- Recorded quantity (included depending on system parameters),
- Unit for recorded quantity (included depending on system parameters),
- Counted quantity (exported as a blank field to allow use in spreadsheets),
- Recorded value (included depending on system parameters),
- Counted value (exported as a blank field to allow use in spreadsheets),
- Unit for counted quantity (exported as a blank field to allow use in spreadsheets),

Note: If a product is serialised, individual serial numbers are exported as separate lines in the position shown above.

Author	DCP		
Project	Z160_000036.doc		
Version	1.0		4 of 4