



Global 3000 Service Pack Note

Product Search - Long Description

Author	DCP	
Project	ZM60_000236.doc	
Version	1.0	1 of 7

INTRODUCTION

This service pack extends the product search views to include a new button which allows the product long description to be displayed. In addition two new product search views have been created which include the first three lines of the product long description.

This service pack extends all ten of the current views available within the product search to include a new button labelled 'Long Description'. When the new button is pressed the long description for the current product is displayed.

In addition two new views have been created which include the first three lines of the product long description along with a button labelled 'More' which when pressed displays the full product long description.

Author	DCP	
Project	ZM60_000236.doc	
Version	1.0	2 of 7

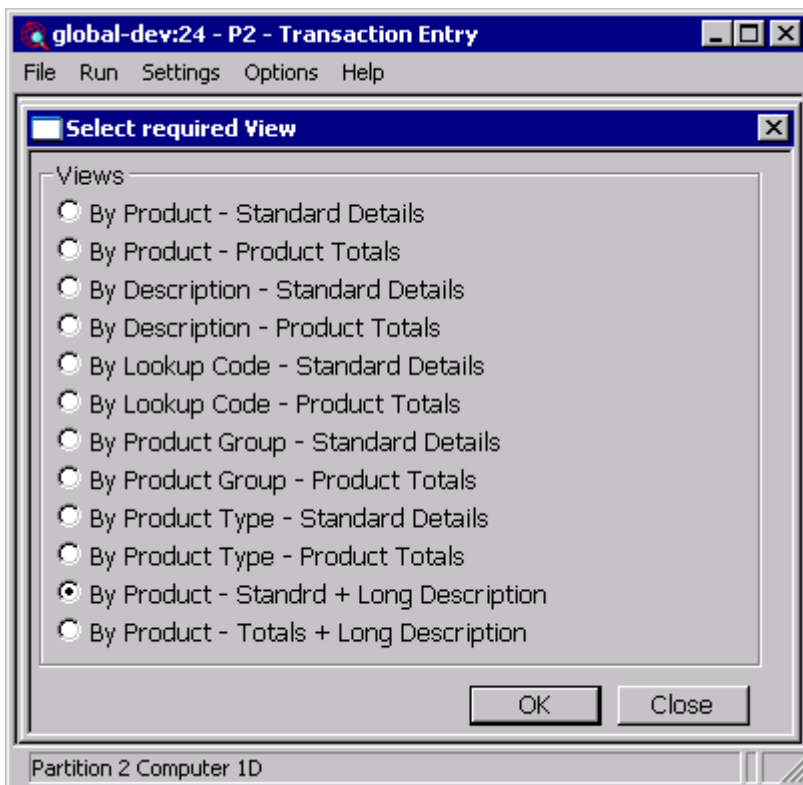
DOCUMENTATION CHANGES

Product Search

The ten alternative views for the product search have been extended to include the following new button.

Long Description Select this to view the long description for the product.

Select Required View

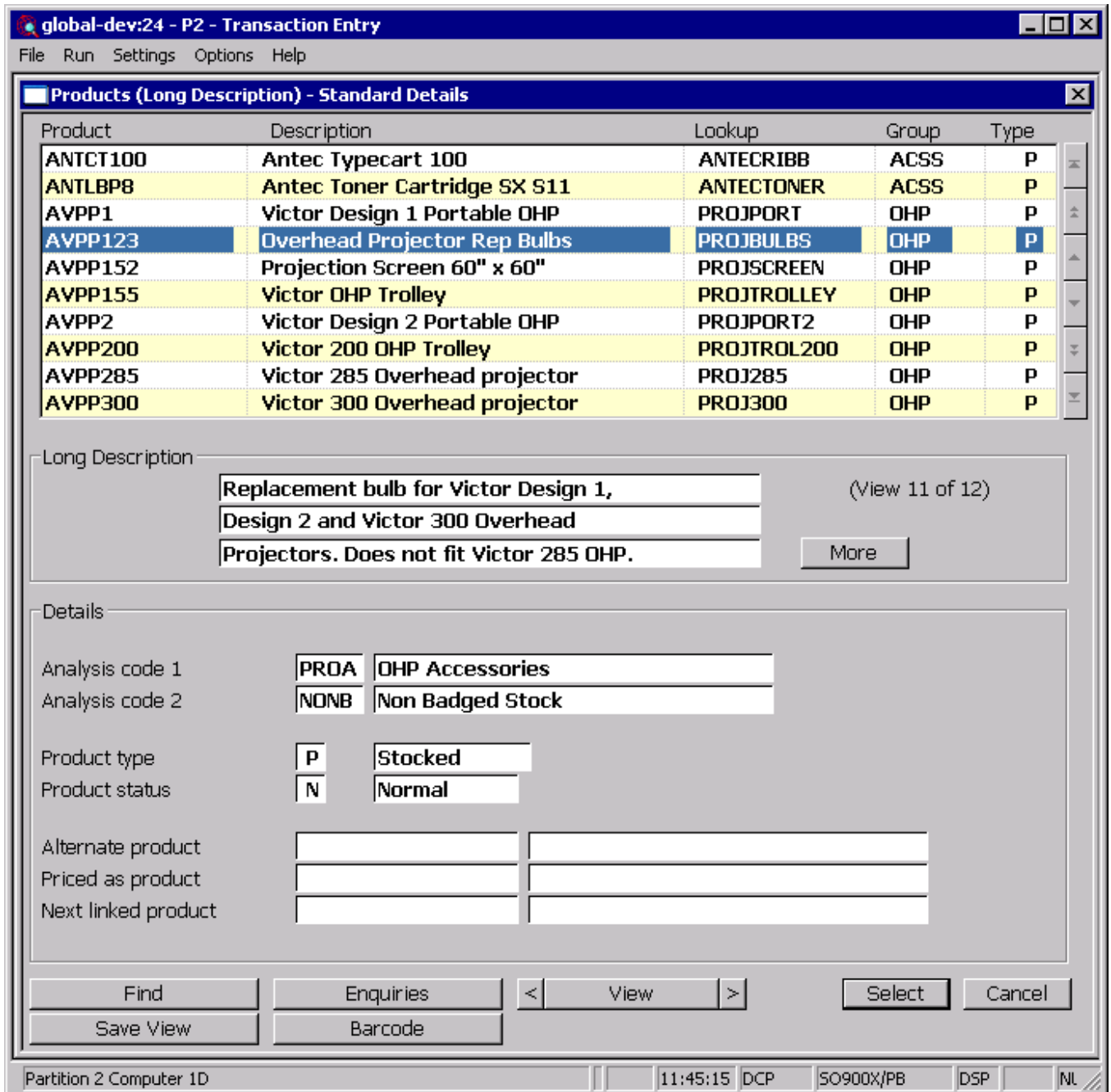


By Product – Standard + Long Description This view lists products in product code sequence; it shows standard details for the product along with the first three lines of the products long description.

By Product – Totals + Long Description This view lists products in product code sequence; it shows totals for the product along with the first three lines of the products long description.

Author	DCP		
Project	ZM60_000236.doc		
Version	1.0		3 of 7

Select Product with Standard Details and Long Description



Purpose This window allows you to select a product. It shows the standard product details along with the product long description in the lower half of the window.

The buttons are:

More Select this to view the full long description for the product.

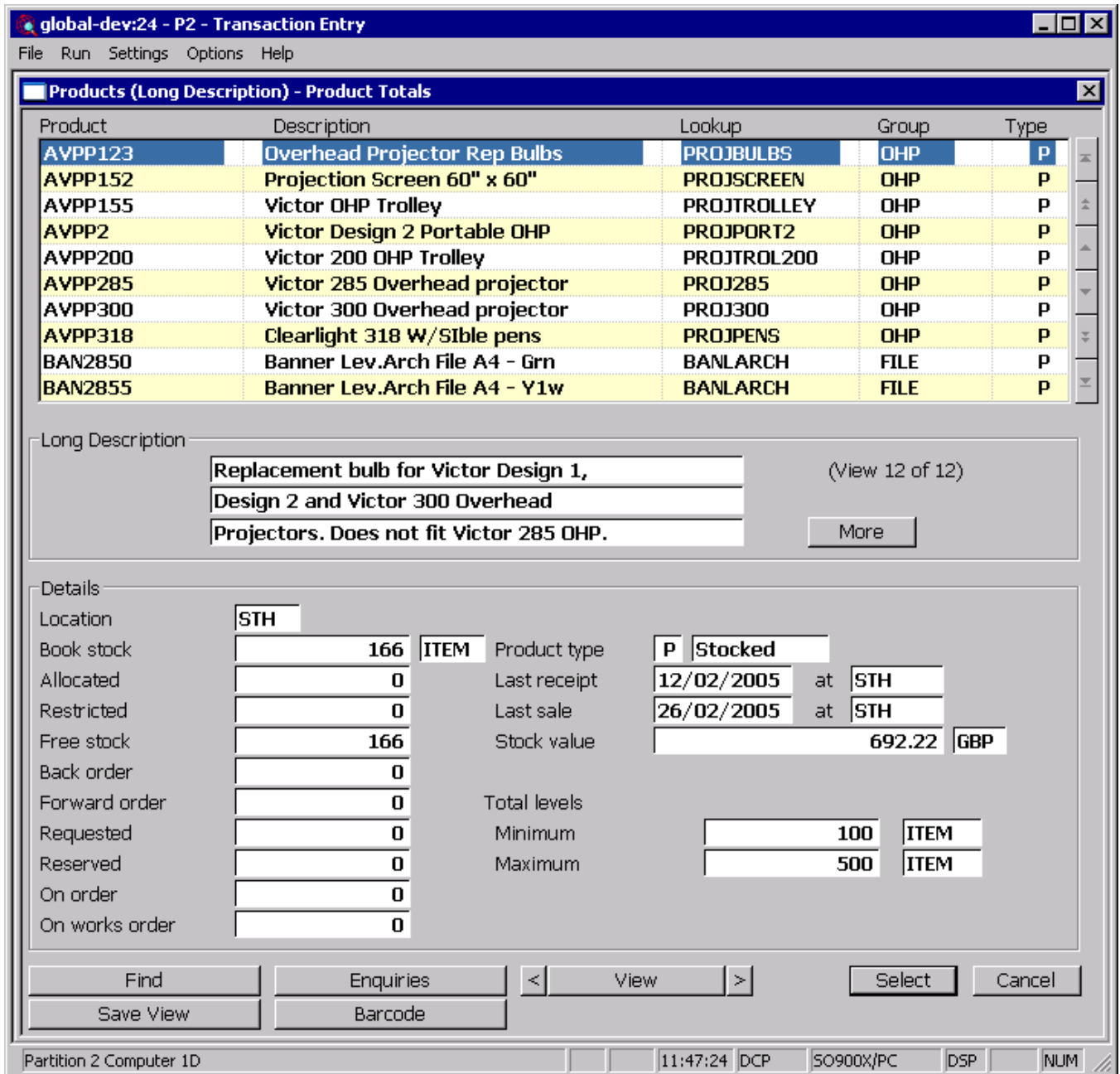
Find This enables you to find products with selected text in specified fields.

Author	DCP
Project	ZM60_000236.doc
Version	1.0
	4 of 7

- Enquiries** This runs the standard product enquiry function for the currently highlighted product.
- < This changes to the preceding alternate view for the product search.
- View** This allows you to manually select the view for the product search.
- > This changes to the next alternate view for the product search.
- Save View** This will establish the current view as your preferred view for the product search. The preferred view is always displayed by default when the product search is entered.
- Barcode** Enter (or scan) the barcode (in upper case) to be used for product selection.
- Prices** *(Only when the product browse is selected within SOP transaction entry).* Shows the prices available for the currently highlighted product and allows selection of the product and pricelist.
- Select** This exits the window and selects the currently highlighted product.
- Cancel** This exits the window without selecting a product.

Author	DCP	
Project	ZM60_000236.doc	
Version	1.0	5 of 7

Select Product with Product Totals and Long Description



Purpose This window allows you to select a product. It shows the product totals along with the product long description in the lower half of the window.

The buttons are:

More Select this to view the full long description for the product.

Find This enables you to find products with selected text in specified fields.

Author	DCP
Project	ZM60_000236.doc
Version	1.0
	6 of 7

- Enquiries** This runs the standard product enquiry function for the currently highlighted product.
- < This changes to the preceding alternate view for the product search.
- View** This allows you to manually select the view for the product search.
- > This changes to the next alternate view for the product search.
- Save View** This will establish the current view as your preferred view for the product search. The preferred view is always displayed by default when the product search is entered.
- Barcode** Enter (or scan) the barcode (in upper case) to be used for product selection.
- Prices** *(Only when the product browse is selected within SOP transaction entry).* Shows the prices available for the currently highlighted product and allows selection of the product and pricelist.
- Select** This exits the window and selects the currently highlighted product.
- Cancel** This exits the window without selecting a product.

Author	DCP	
Project	ZM60_000236.doc	
Version	1.0	7 of 7