



Global 3000 Service Pack Note Account Opened Date

Author	DCP		
Project	ZD60_000241.doc		
Version	1.0		1 of 4

INTRODUCTION

This service pack allows the account opened date to be specified for customers.

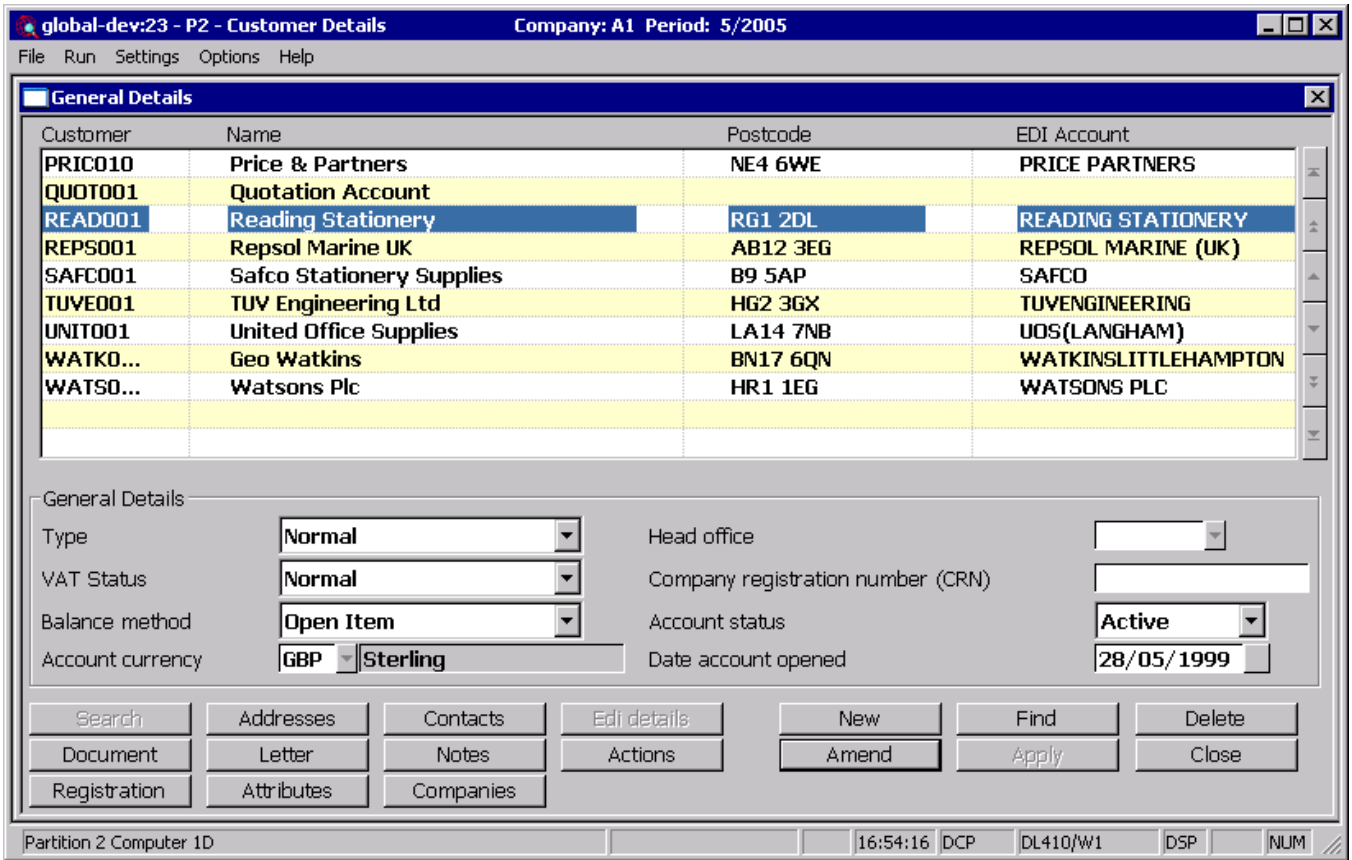
Previously when a new account was created in Debtors Ledger the system automatically set the 'Account opened date' to the current system date. However, this did not take into account situations where data was created in advance of a user 'going live'.

The following changes have been made:

- Customer maintenance will be updated to show and allow amendment of the account opened date,
- Customer enquiries will be updated to show the account opened date.

Author	DCP	
Project	ZD60_000241.doc	
Version	1.0	2 of 4

Customer Maintenance



Date account opened Enter the date the account was opened. For new accounts this has an initial default of the system date.

Author	DCP
Project	ZD60_000241.doc
Version	1.0

Enquiries

global-dev:23 - P2 - Customer Enquiries Company: A1 Period: 5/2005

File Run Settings Options Help

Customer Details (READ001 - Reading Stationery) for Company A1

Account Information		Customer	READ001	Reading Stationery	Account opened	28/05/1999
Account currency	GBP		Sterling		Account status	Active
Trading terms	B		Due 60 Days		VAT status	Normal
Credit rating	A		Excellent		Credit limit	60,000
Sales Rep.	HS		Hilary Smith		Balance method	Open item
Territory	S02				Account type	Normal

Account Settings		Contact Details	
<input checked="" type="checkbox"/> Key customer?	Statement	Printed	Contact
			Mr Smith
			Phone
			Fax
			Mobile
			Email
			http://
			Method
			Not Specified

Classifications		General Ledger	
Class	R1	Default profit centre	
		Control profit centre	
		Autopost profit centre modifier	
		Cost of sales pc modifier	
		Default account	
		Control account	
		Autopost account modifier	
		Cost of sales a/c modifier	

Bank Details SOP Details Close

Partition 2 Computer 1D 16:55:16 DCP DL420B/WZ EDT NUM

Account opened The date the account was opened.

Author	DCP
Project	ZD60_000241.doc
Version	1.0
	4 of 4