



# **Global 3000 Service Pack Note Optional CL Remittance Advices**

<b>Author</b>	DCP	
<b>Project</b>	ZP60_000192.doc	
<b>Version</b>	1.0	1 of 2

**INTRODUCTION**

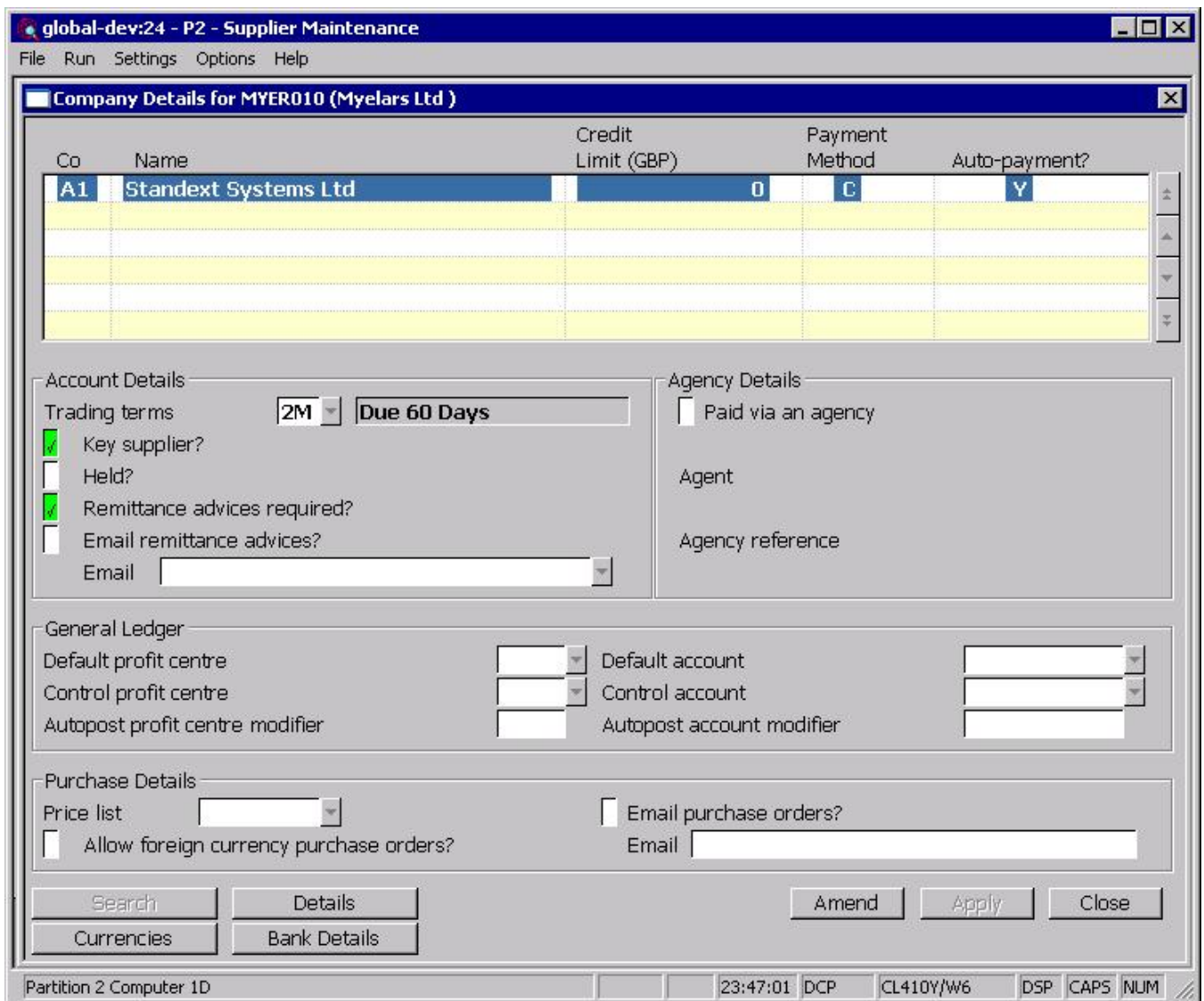
This service pack provides the ability to signal that specific suppliers do not require Creditors Ledger remittance advices.

Creditors Ledger Supplier Maintenance (company details) has been updated to include a new option labelled 'Remittance advices required'. Auto-payments has been updated so that remittance advices are only generated for the suppliers with the new option set.

Please note, by default the 'Remittance advices required' option is set for all suppliers configured to process payments via auto-payments.

**DOCUMENTATION CHANGES**

**Supplier Maintenance – Supplier/Company Details**



**Remittance advices required?** (Only if supplier is paid via auto-payments). Set this if remittance advices are to be generated by auto-payments for this supplier.

<b>Author</b>	DCP
<b>Project</b>	ZP60_000192.doc
<b>Version</b>	1.0
	2 of 2