



Global 3000 Service Pack Note

Amend Works Order Quantity

Author	DCP	
Project	ZV60_000032.doc	
Version	1.0	1 of 5

INTRODUCTION

This service pack extends Works Order Entry to allow the quantity to be manufactured for existing works orders, to be amended.

Works Order Entry has been updated to allow the quantity to be manufactured to be changed when amending an existing works order.

Any attempt to reduce or increase the quantity of finished items being manufactured refers back to the current assembly bill for the product. If any components in the current assembly bill do not appear on the works order, the quantity to be manufactured cannot be amended.

When the quantity is changed, the system works out the number of each component required using the current assembly bill and moves this to the first line on the works order for that component.

It should be noted that if the quantity is changed any manual changes to component quantities are not retained.

The quantities of works orders created for sub-assemblies are also updated to reflect the quantity amendment.

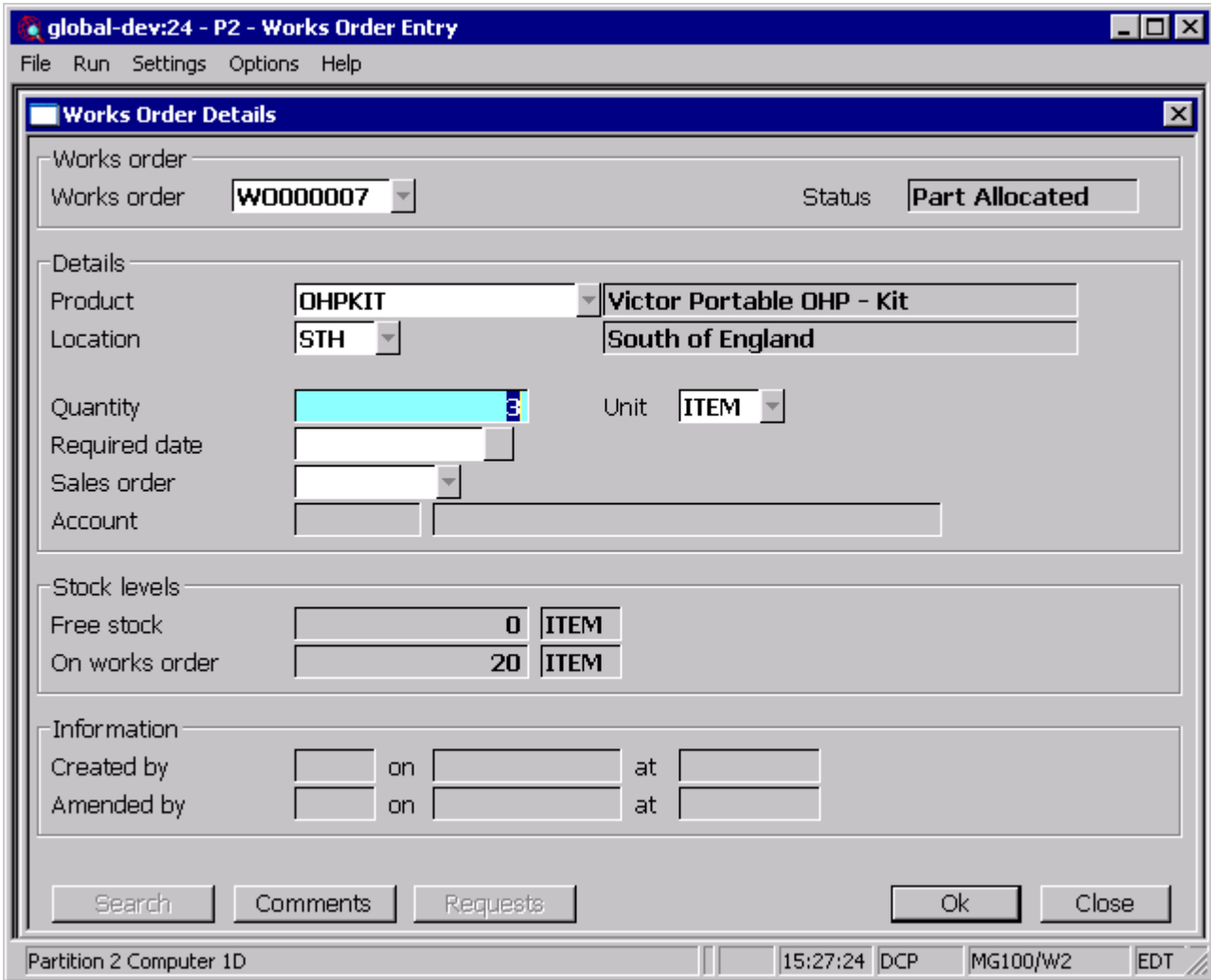
Limitations:

- The quantity to be manufactured cannot be reduced below the quantity that has already been completed.
- Issued stock (not used to complete finished products) must be returned before the quantity to be manufactured is reduced, this restriction is not relevant when the quantity to be manufactured is increased.
- If lines from a works order have been deleted and then reinserted at a different position, the works order will be unrecognisable when compared with the assembly bill, in this case the quantity to be manufactured cannot be amended.

Please note, when the quantity to be manufactured is amended any lines on the works order that do not appear in the current assembly bill are ignored. A warning is given to state that this has occurred.

Author	DCP		
Project	ZV60_000032.doc		
Version	1.0		2 of 5

Works Order Entry



Quantity Enter the quantity of the item to be manufactured. This can be amended for existing works orders depending on the 'Allow amendment of works order quantities' system setting.

Note The number of decimal places when converted to stock units must not exceed the number allowed for this product. If necessary the quantity is rounded to ensure this.

If the quantity to be manufactured is amended on an existing works order, the quantity of components required is calculated based on the current assembly bill. Any manual changes to the quantity of component lines are not retained.

If a line from the assembly bill is no longer present on the works order, an error is given and the process is abandoned.

Author	DCP		
Project	ZV60_000032.doc		
Version	1.0		3 of 5

The quantity to be manufactured cannot be reduced below the quantity that has already been completed.

The quantity to be manufactured cannot be reduced if component stock has been issued (but not used to complete finished products). The user should use the returns function to return all issued (but not completed) components to stock before reducing the quantity to be manufactured.

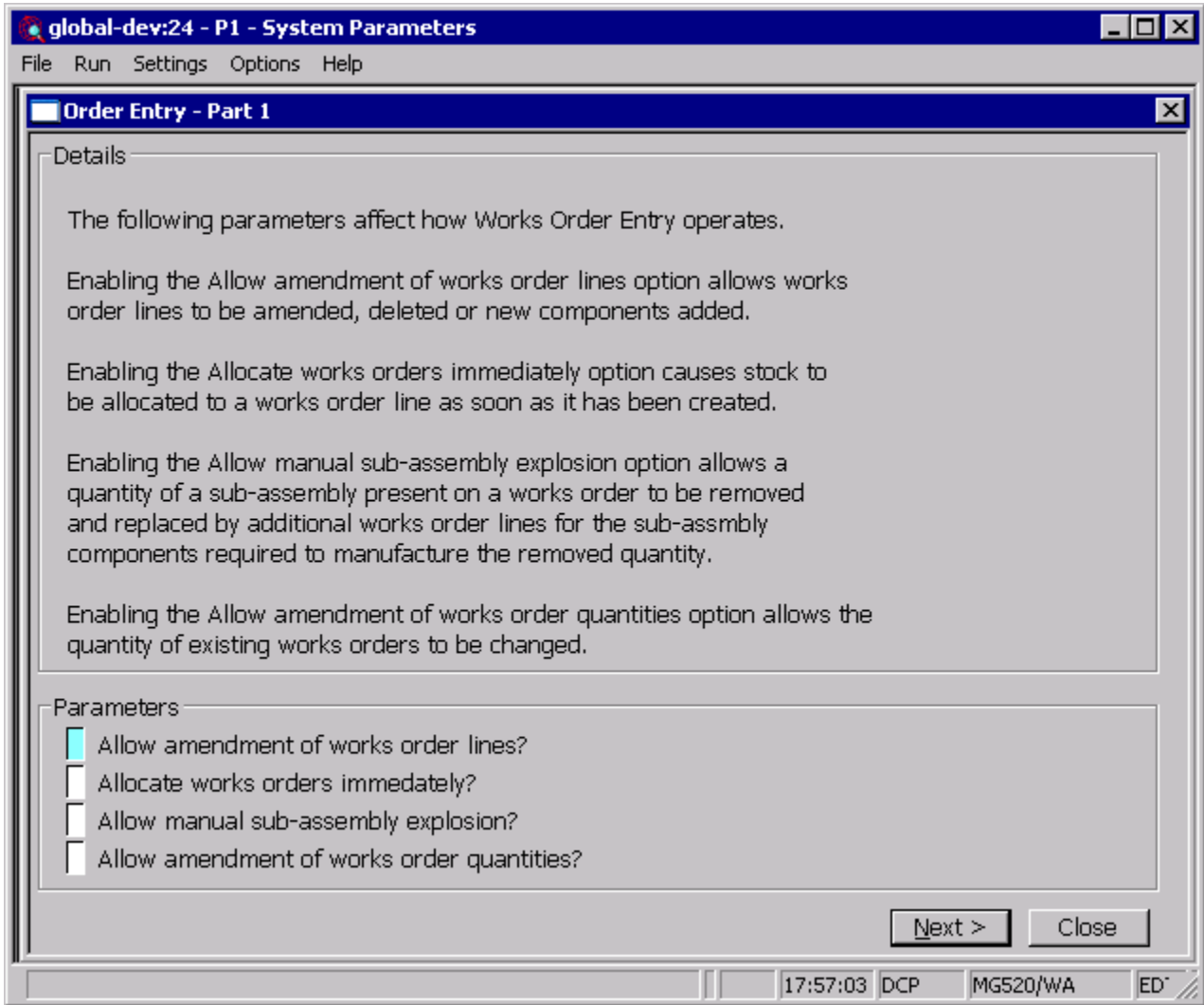
If a line from the assembly bill is no longer present on the works order, an error is given and the process is abandoned.

If a line is found on the works order that is not present on the current assembly bill, the line is left unchanged and the user is informed that one or more additional lines have been found. It is then the users' responsibility to make sure any changes required to these lines are made manually.

The quantities for any sub-assembly works orders generated to fulfil the works order being amended are also recalculated.

Author	DCP	
Project	ZV60_000032.doc	
Version	1.0	4 of 5

Manufacturer Parameters - Works Order Entry



Allow amendment of works order quantities? Set this to allow changes to the quantity to be manufactured for existing works orders.

Author	DCP		
Project	ZV60_000032.doc		
Version	1.0		5 of 5