



Global 3000 Service Pack Note

Works Order - Over-Allocation of Component Stock

| | | |
|----------------|-----------------|--------|
| Author | DCP | |
| Project | ZV60_000033.doc | |
| Version | 1.0 | 1 of 3 |

INTRODUCTION

This service pack provides the ability to over-allocate component stock to works order lines.

This service pack introduces a new setting within Manufacturer System Parameters labelled 'Allow over-allocation of component stock'. When set works order lines can be both manually and automatically over-allocated even when there is insufficient component stock.

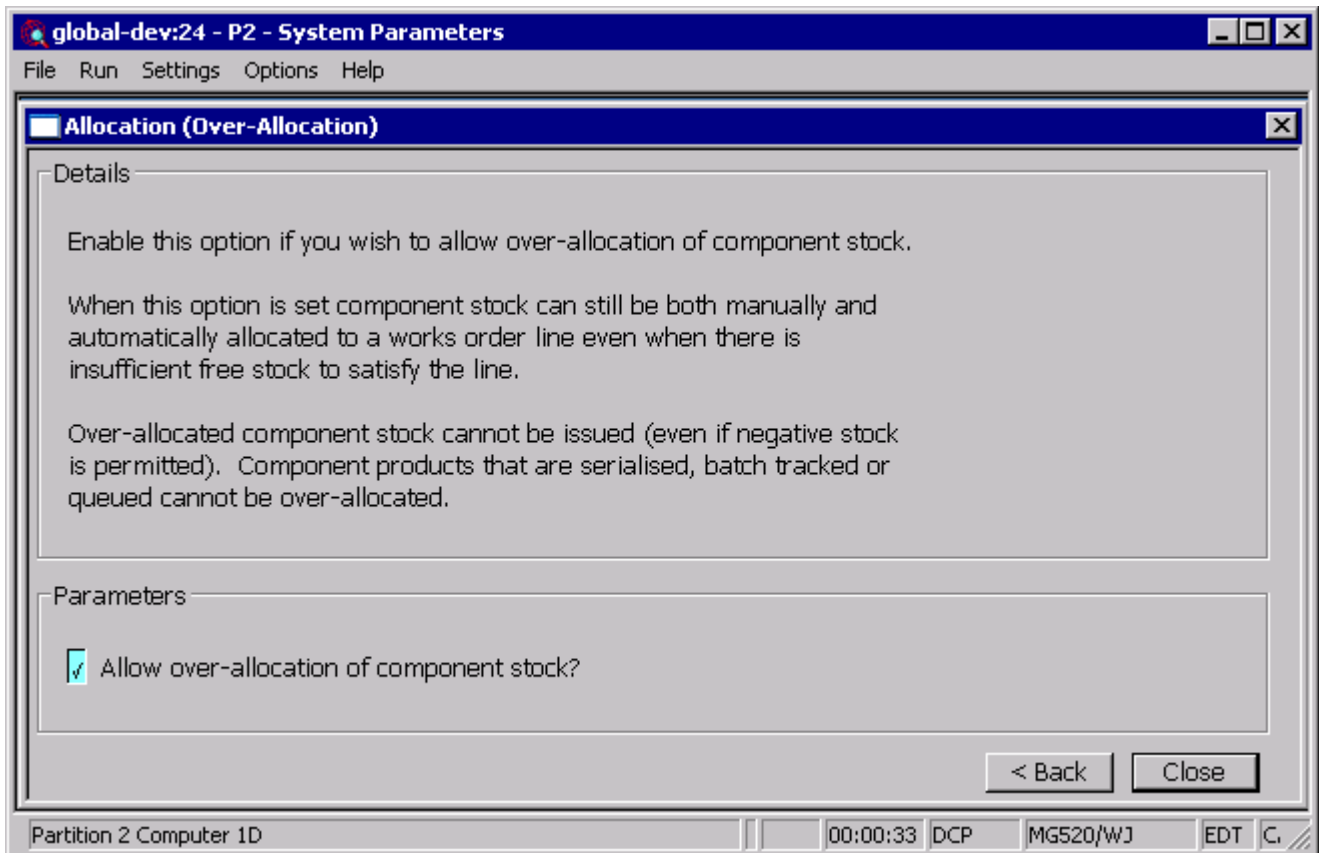
Products that are serialised, batch tracked or processed via the stock queue cannot be over-allocated.

It should be noted that when a component product is over-allocated its free stock level will become negative, however Manufacturer does not allow over-allocated stock to be issued (even in systems where negative free stock is permitted).

| | | |
|----------------|-----------------|--------|
| Author | DCP | |
| Project | ZV60_000033.doc | |
| Version | 1.0 | 2 of 3 |

DOCUMENTATION CHANGES

Manufacturer Parameters - Allocation (Over-Allocation)



Purpose This window allows you to configure Manufacture to allow over-allocation of component stock.

The prompts are:

Allow over-allocation of component stock When set component stock can still be both manually and automatically allocated to a works order line even if there is insufficient free stock to satisfy the works order line.

Note Over-allocated component stock cannot be issued (even if the system is configured to permit negative free stock).

Component products that are serialised, batch tracked or processed via the stock queue cannot be over-allocated.

| | | |
|----------------|-----------------|--------|
| Author | DCP | |
| Project | ZV60_000033.doc | |
| Version | 1.0 | 3 of 3 |