



Global 3000 Service Pack Note

Manufacturer - Estimated Cost

Author	DCP		
Project	ZV60_000040.doc		
Version	1.0		1 of 6

INTRODUCTION

This service pack updates Works Order Entry, Enquiries and the Bill Details Report to include the estimated component cost.

Works order entry has been updated to include a new button labelled 'Costs', when pressed the estimated cost and cost to date values for the current component line are shown. This is only available at sites configured to show costs in order entry.

Works order enquiries has been updated to include a new button labelled 'Costs', when pressed the estimated cost and cost to date values for the current component line are shown. This is only available at sites configured to show costs in enquiries.

The Bill Details report has been updated to introduce a new setting within the report criteria labelled 'Print estimated costs?', when selected the estimated cost for each component will be printed (on a separate line) also the total estimated cost for the assembly bill will be printed. This is only available at sites configured to show costs in enquiries.

Author	DCP	
Project	ZV60_000040.doc	
Version	1.0	2 of 6

DOCUMENTATION CHANGES

Works Order Enquiries

global-dev:24 - P2 - Works Order Enquiries

File Run Settings Options Help

Works Order Lines

Order details

Order no: W00000... Quantity: 2 ITEM

Product: OHPKIT Victor Portable OHP - Kit Completed: 2

Location: MID Midlands and Wales Written-off: 0

Required date: Estimated cost: 1,427.50

Cost to date: 1,427.50

Component	Description	QC	Locn	Required	Unit	Allocated	Issued
AVPP2	Victor Design 2 Portable OHP		MID	2	ITEM	0	2
ANTLBP8			MID	6	ITEM	0	6
AVPP200			MID	2	ITEM	0	2
GAL01			MID	2	ITEM	0	2
GAL02			MID	2	ITEM	0	2
GAL03			MID	2	ITEM	0	2
GAL04			MID	2	ITEM	0	2
STA01	Status Highlighter - Yellow		MID	2.00	BOX	0.00	2.00
STA02	Status Highlighter - Blue		MID	4.00	BOX	0.00	4.00

Works order

Allocates to: Line: Original works order:

Sales order

Sales order: Line: Account:

Order Comments Queue Details Finished Goods Component Issue QC Details Close

Line Comments Wastage Details Costs

Partition 2 Computer 1D 15:18:50 DCP PM420W/W2 DSP CAPS NUM

Costs *(Only if costs are displayed in enquiries)* Select this to view the cost values for the current component line.

Author	DCP
Project	ZV60_000040.doc
Version	1.0
	3 of 6

Works Order Entry

global-dev:24 - P2 - Works Order Entry

File Run Settings Options Help

Works Order Lines

Order Details

Order no: Quantity: ITEM

Product: Completed:

Location: Estimated cost:

Required date: Cost to date:

Component	Description	QC Locn	Required Unit	Allocated	Issued
AVPP2		MID	1 ITEM	0	0
ANTLBP8		MID	3 ITEM	0	3
AVPP200		MID	1 ITEM	0	1
GAL01		MID	1 ITEM	0	1
GAL02		MID	1 ITEM	0	1
GAL03		MID	1 ITEM	0	1
GAL04		MID	1 ITEM	0	1

Stock Levels

Book Stock: Allocated: Restricted: Free stock:

Search | Explode | QC Line | Order Comments | Supply and Demand | Amend | Apply | Close

Line Comments | Wastage Details

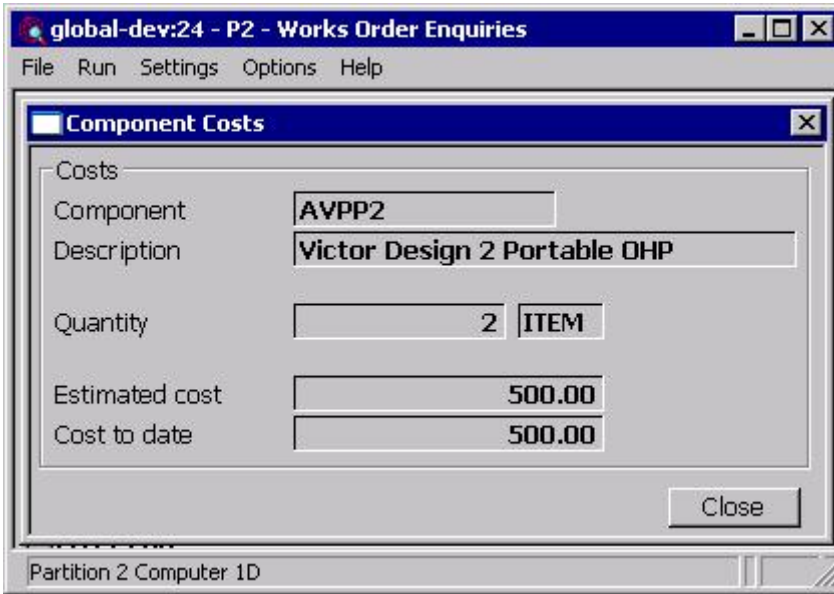
Costs

Partition 2 Computer 1D | 15:22:27 DCP | MG100/W1 | DSP CAPS NUM

Costs *(Only if costs are displayed in works order entry)* Select this to view the cost values for the current component line.

Author	DCP		
Project	ZV60_000040.doc		
Version	1.0		4 of 6

Cost Details



This window appears when you press the 'Costs' button within works order entry or enquiries.

Purpose This window shows the wastage percentage and approximate quantities for the current component line.

The prompts are:

Quantity *(Display only)* The required component quantity.

Estimated cost *(Display only)* The components estimated cost.

Cost to date *(Display only)* The cost of issued components.

Author	DCP	
Project	ZV60_000040.doc	
Version	1.0	5 of 6

Bill Details Report

global-dev:24 - P2 - Bill Details Report

File Run Settings Options Help

Bill Details Report

Range

Products **All** From To

Report Format

Print Levels **All Levels**

Include expired assembly lines?

Print assembly comments?

Print component comments?

Print estimated costs?

Search Next > Close

Partition 2 Computer 1D 15:23:51 DCP MG430/DR EDT CAPS NU

Print estimated costs? *(Only if costs are displayed in enquiries)* When selected the estimated cost for each component line is printed along with the total estimated cost for the assembly bill.

Author	DCP	
Project	ZV60_000040.doc	
Version	1.0	6 of 6