



# Global 3000 Service Pack Note

## Manufacturer Picking List - Print Bin Locations

<b>Author</b>	DCP	
<b>Project</b>	ZV60_000041.doc	
<b>Version</b>	1.0	1 of 2

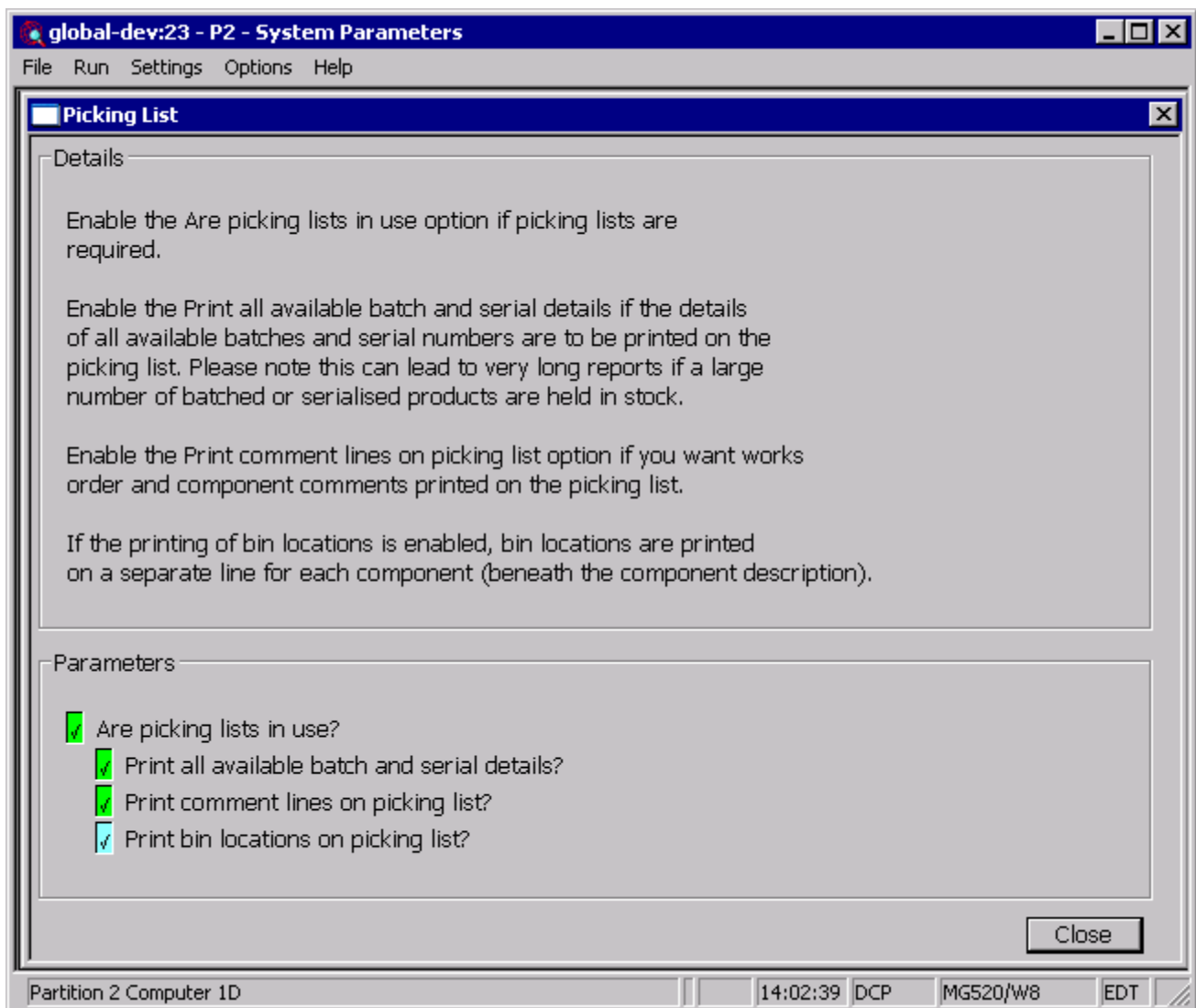
## INTRODUCTION

This service pack provides the ability to print bin locations on the picking list.

The changes introduce a new setting within Manufacturer System Parameters (Picking List) labelled 'Print bin locations on picking list'. When set the bin location is printed for each component on a separate line (beneath the component description).

## DOCUMENTATION CHANGES

### Manufacturer Parameters – Picking List



#### Print bin locations on picking list

When set picking list print includes the bin location for each component on a separate line (beneath the component description). When batch or serial number details are printed the bin location is included on the same line.

#### Note

If a bin location has not been defined for a component the line containing the bin location is omitted.

<b>Author</b>	DCP	
<b>Project</b>	ZV60_000041.doc	
<b>Version</b>	1.0	2 of 2