



Global 3000 Service Pack Note

GL Analysis Comments within Cash Manager

Author	DCP		
Project	ZC60_000091.doc		
Version	1.0		1 of 6

INTRODUCTION

The service pack provides the ability to enter and post two GL comment fields when entering GL analysis.

Cash Manager now prompts for (and posts) two GL comment fields. The first GL comment field defaults to the comment entered on the transaction line (if there is one). The second GL comment field defaults to the payee/payer name (if there is one). All GL analysis entry and enquiry windows have been updated to include the new GL comment fields. In addition, the Trial Balance by GL Account Report has been updated to print GL Analysis comments (on separate lines) below the narrative when a detailed report is selected

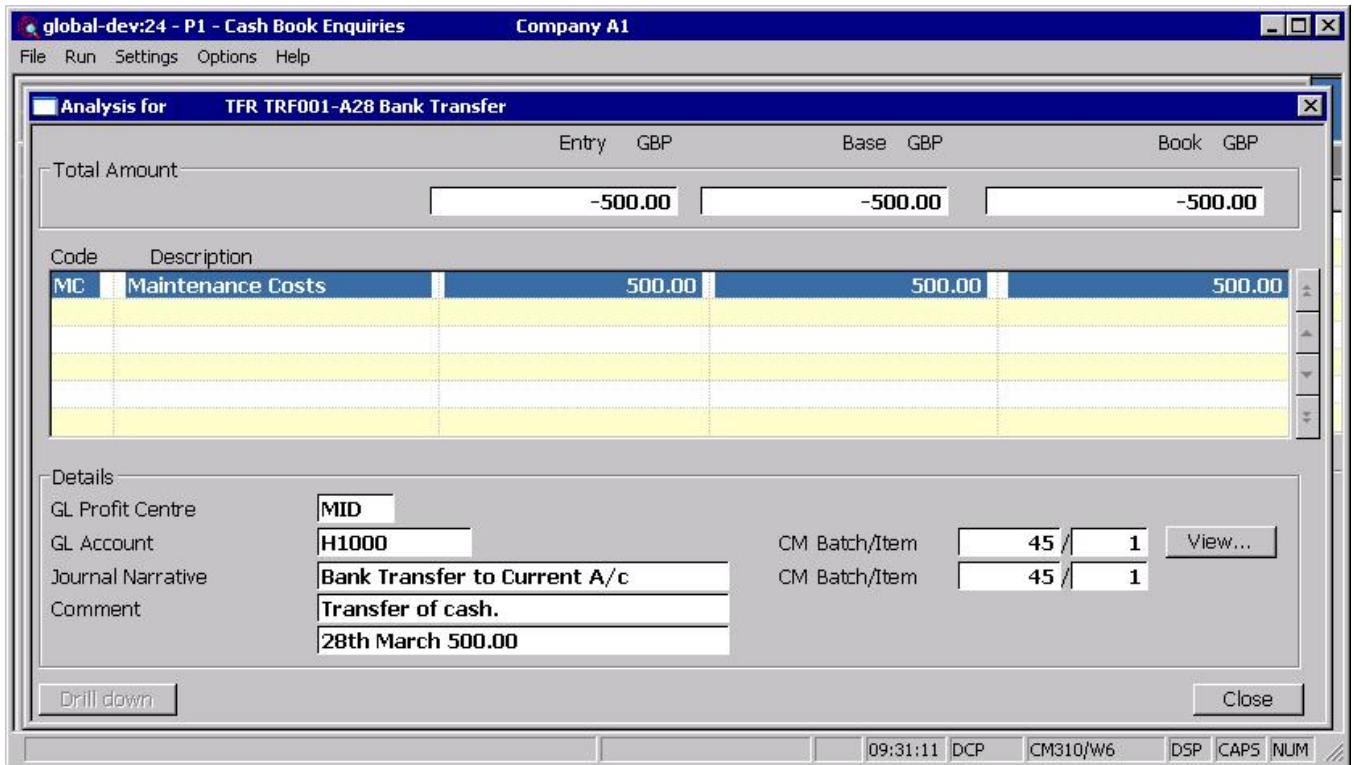
Note: The interface files used for posting transactions into Cash Manager have not been updated and continue to include just the single 30 character journal narrative.

DOCUMENTATION CHANGES

Transaction Entry – Transaction Details Window

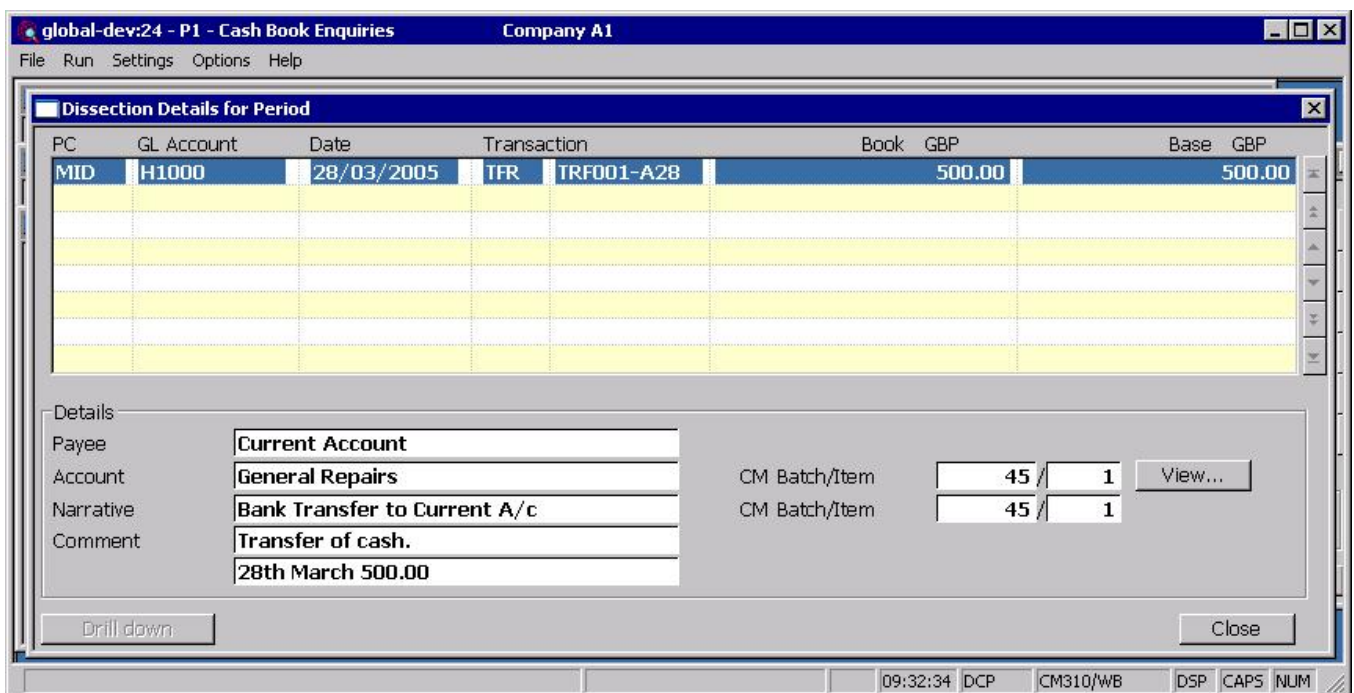
Author	DCP
Project	ZC60_000091.doc
Version	1.0
	2 of 6

Cash Book Enquiries – Analysis Window



Comment The two 30 character comments to be passed to General Ledger.

Cash Book Enquiries – Dissection Details for Period Window



Comment The two 30 character comments to be passed to General Ledger.

Author	DCP
Project	ZC60_000091.doc
Version	1.0
	3 of 6

Batch Enquiries – Analysis Window

global-dev:24 - P1 - Cash Manager Batch Enquiries Company A1

File Run Settings Options Help

Analysis for TFR TRF001-A28 Bank Transfer

Total Amount Entry GBP Base GBP Book GBP

-500.00 -500.00 -500.00

Code	Description	Entry	Base	Book
MC	Maintenance Costs	500.00	500.00	500.00

Details

GL profit centre MID

GL account H1000

Journal narrative Bank Transfer to Current A/c

Comment Transfer of cash.

 28th March 500.00

Drill down Close

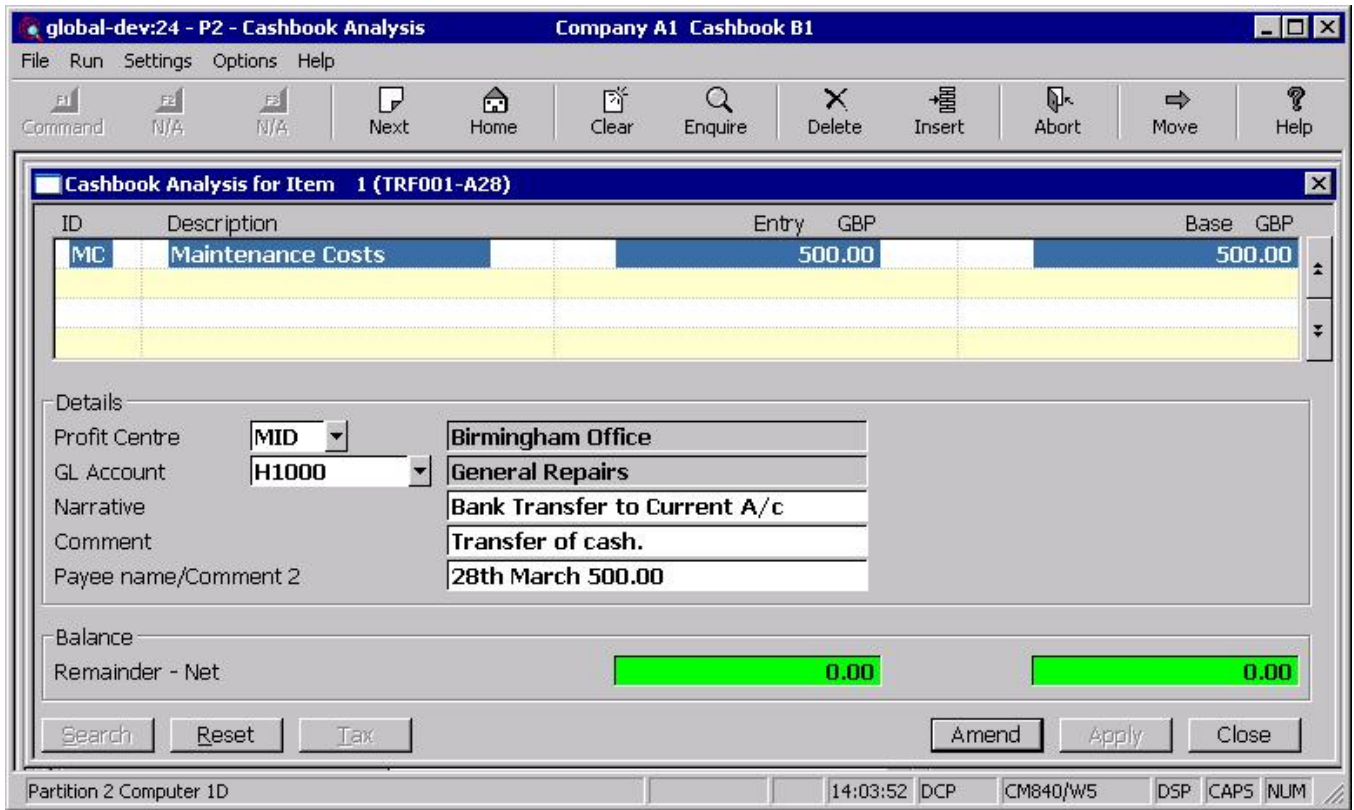
09:33:51 DCP CM320/W5 DSP CAPS NUM

Comment The two 30 character comments to be passed to General Ledger.

Author	DCP
Project	ZC60_000091.doc
Version	1.0

4 of 6

Cash Book Analysis for Item Window

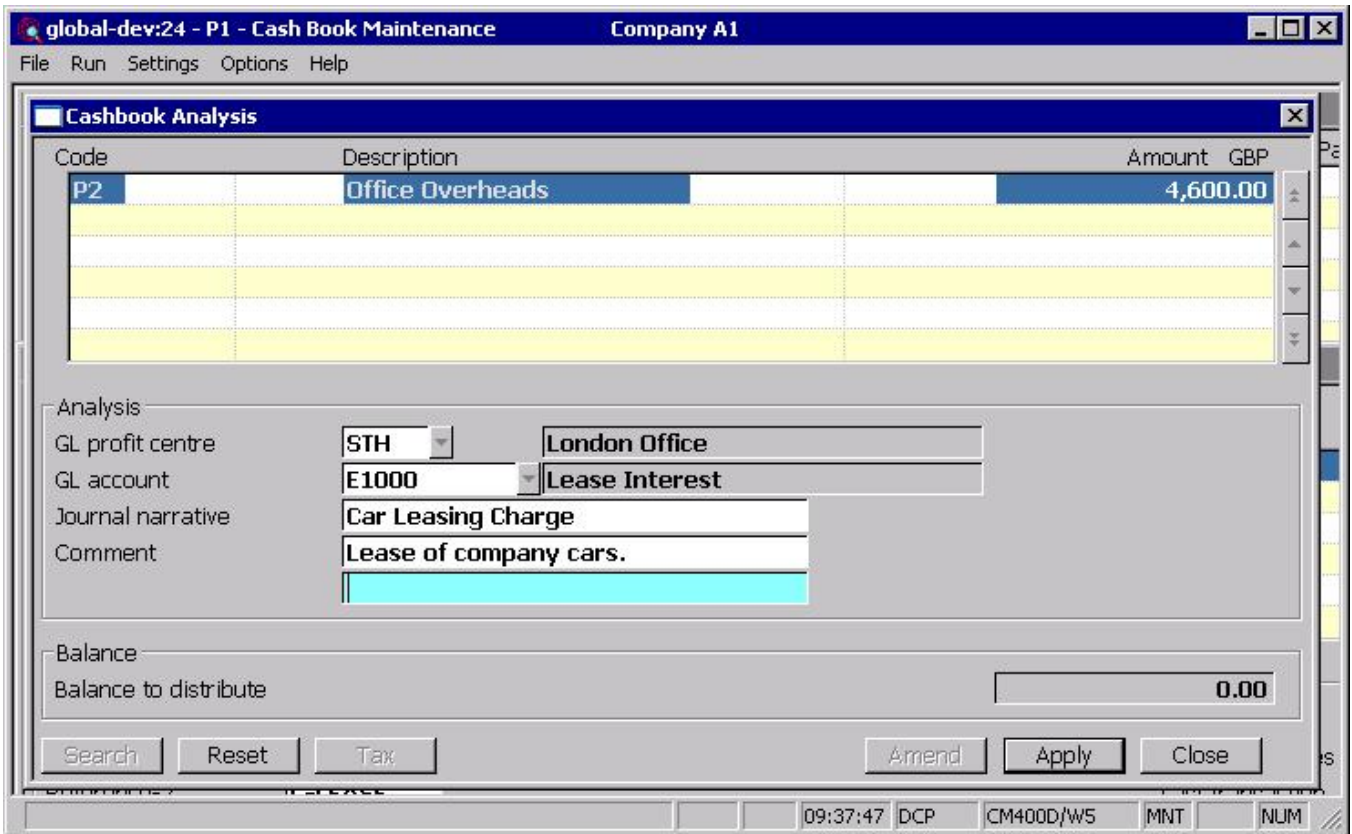


Comment Enter an optional 30 character comment to be passed to General Ledger. This defaults to the comment entered on the transaction line.

Payee (Payer) name/Comment 2 Enter an additional (optional) 30 character comment to be passed to General Ledger. This defaults to the payee/payer name associated with the transaction line.

Author	DCP
Project	ZC60_000091.doc
Version	1.0
	5 of 6

Cash Book Maintenance – Cash Book Analysis Window



Comment Enter two optional 30 character comments to be passed to General Ledger.

Author	DCP		
Project	ZC60_000091.doc		
Version	1.0		6 of 6