



# Global 3000 Service Pack Note General Ledger Postings Report

<b>Author</b>	DCP		
<b>Project</b>	ZC60_000115.doc		
<b>Version</b>	1.0		1 of 3

## INTRODUCTION

The requirement is to update Debtors Ledger, Creditors Ledger and Cash Manager to provide a replacement for the redundant GL Transfer Report.

Cash Manager has been updated to provide a new report named 'General Ledger Postings Report'. This is available as a stand-alone option on the End of Period Menu (in Cash Manager).

When selected it prints a report listing all General Ledger analysis generated by the module (in GL company, profit centre and account sequence) for the current period.

The report can be printed in either standard or PDF format depending on the selection in the report options window. If printed in PDF format it includes the General Ledger transaction number generated when the analysis was posted and the General Ledger units attributed to each posting.

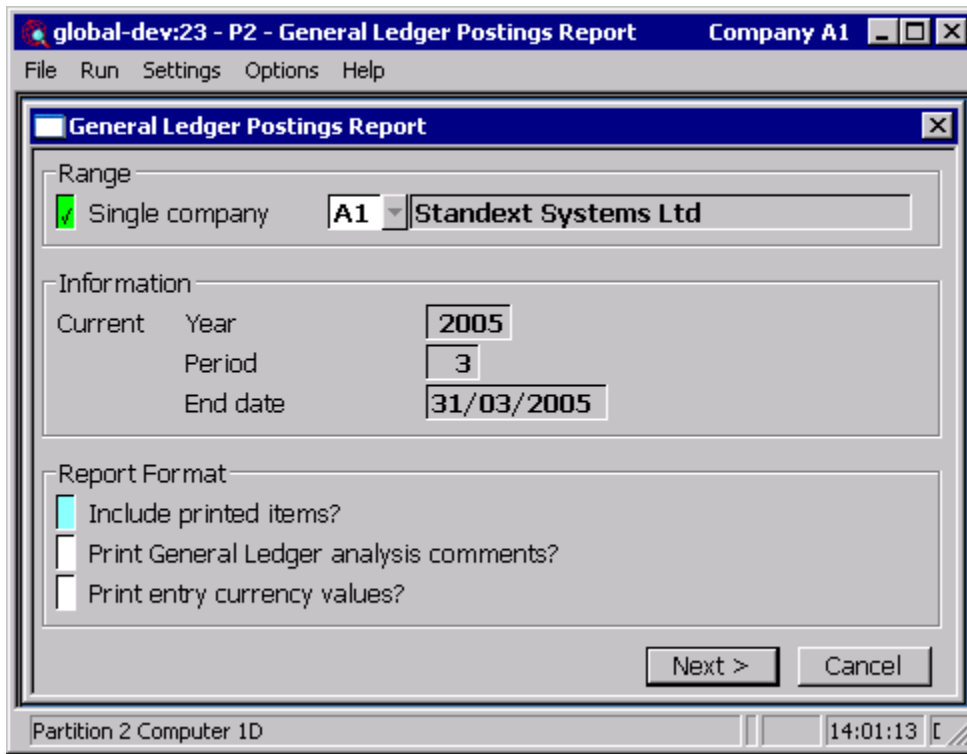
Note, printing reports in PDF format requires an up-to-date copy of either PDF\_In\_The\_Box.dll or All\_In\_The\_Box.dll to be present on each GX client used to perform the document generation.

Please note, the menu file for Cash Manager has been updated to include the 'General Ledger Postings Report' option in the End of Period Processing Menu.

Please copy CM-Menus from your program unit (\$P) to your data unit (CMD) after applying this Service Pack. This step is not required if service pack ZM60\_000080\_000 has been applied and unit 'G3M' has been assigned to your program unit (\$P).

<b>Author</b>	DCP	
<b>Project</b>	ZC60_000115.doc	
<b>Version</b>	1.0	2 of 3

## CM General Ledger Postings Report



This window appears when you select 'General Ledger Postings Report' from the End of Period Processing Menu.

**Purpose** This window enables you to enter selection options for the report

**Single company** *(Only for multi-company systems)* Set this to choose a company for the report, otherwise the report is printed for each company in turn.

**Current year, period and end date.** *(Display only.)* Details of the current year and period are displayed here.

**Include printed items** Set this to reprint items that have already appeared on the report this period.

**Note** If you are running a summary report (in standard rather than PDF format), the totals exclude items that have already been printed.

**Print General Ledger analysis comments?** *(Only applies to detailed reports.)* Set this to print the General Ledger analysis comments.

**Print entry currency values?** *(Only applies to detailed reports in multi-currency systems.)* Set this to print the value of each transaction in entry currency as well as its value in base currency.

**Note** Whether the summary or detailed report is required is chosen in the print options window. If a summary report is selected the responses to the above two prompts are ignored.

<b>Author</b>	DCP	
<b>Project</b>	ZC60_000115.doc	
<b>Version</b>	1.0	3 of 3