



Global 3000 Service Pack Note

Global 3000 Cash Manager - Remove Session Handling

| | | |
|----------------|------------------|--------|
| Author | DCP | |
| Project | ZC60_000165.docx | |
| Version | 1.0 | 1 of 4 |

INTRODUCTION

The requirement is to remove session handling from Cash Manager and to rename the daybook report as the audit report.

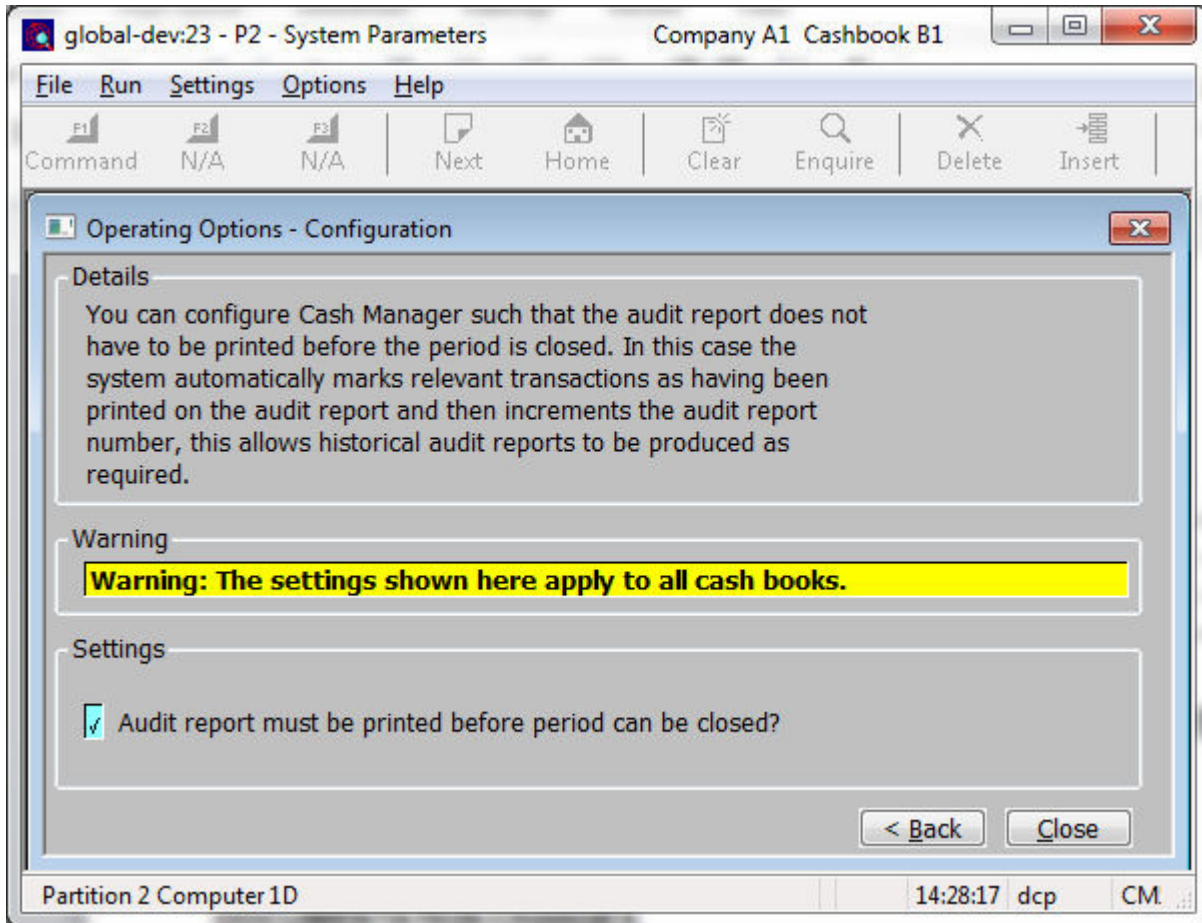
When the system was originally released business practices involved producing a daily report of transactions processed, this was named the daybook. In more recent times practices have largely changed and for the most part people do not print the daybook daily, in fact a growing number of users only produce the daybook report during close period and then only because the system does not allow the period to be closed until the report has been printed.

The following changes have been made:

- The daybook report has been renamed as the 'Audit Report' and moved from the 'Transaction Entry' menu to the 'End of Period' menu.
- All references to the Daybook have been replaced with 'Audit', for example the daybook sequence number has become the audit report number. This is shown within transaction entry and enquiries.
- A new system parameter has been added to the operating options named 'Audit report must be printed before period can be closed'. When set (the default), the period cannot be closed until the audit report has been printed. When not set, close period will automatically mark all transactions that have not been printed on an audit report as having been included and will increment the audit report number. This means that historical audit reports can be produced regardless of the new parameter setting.
- Close session has been removed from the Transaction Entry menu.
- All references to sessions have been removed.

| | |
|----------------|------------------|
| Author | DCP |
| Project | ZC60_000165.docx |
| Version | 1.0 |
| | 2 of 4 |

CM System Parameters – Operating Options - Configuration



This window appears when you confirm your responses in the ‘Reconciliation Options’ window.

Purpose This window contains Cash Manager configuration options.

Note The configuration options in this window apply to **ALL** cash books.

The prompts are:

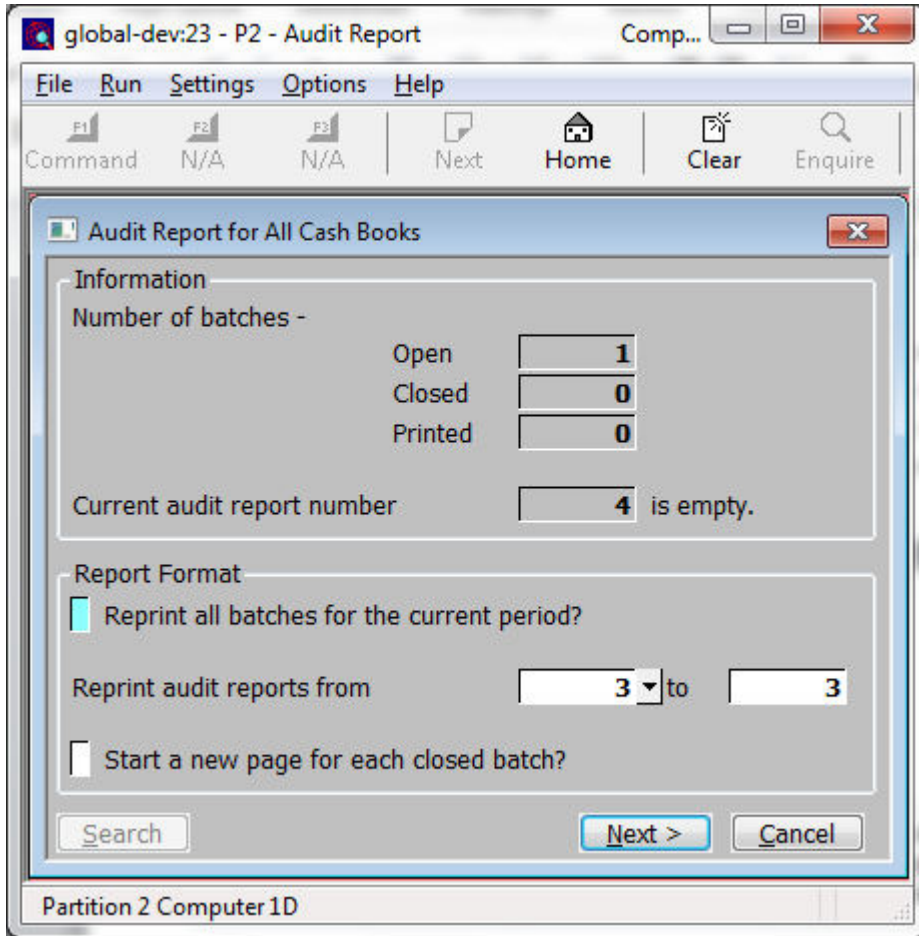
Audit report must be printed before period can be closed

If this is set the current period cannot be closed until all transactions have been printed on the audit report. If this is not set, close period automatically marks all transactions (that have not been printed on an audit report) as having been included on the latest audit report and increments the audit report number. This means that historical audit reports can be produced regardless of the new parameters setting.

Note In multi-company systems, when close period automatically marks transactions as having been included on the latest audit report all transactions are included regardless of whether or not the period is being closed for a single company.

| | |
|----------------|------------------|
| Author | DCP |
| Project | ZC60_000165.docx |
| Version | 1.0 |

CM Audit Report



Purpose This window enables you to enter selection options for the audit report. Depending on system configuration the audit report must be printed and the audit report number incremented before the current period can be closed.

The prompts are:

Number of batches *(Display only.)* The number of batches that are open, and that have been posted and printed since the audit report number was last incremented.

Current audit report The number of the current audit report and the dates of the first and last posted batches it relates to. If the current audit report contains no posted batches, the words 'is empty' appear alongside the number.

Reprint all batches for the current period Set this to produce an audit report listing all batches entered in the current period.

Print/Reprint audit report from...to *(The label for these prompts differ between 'Print' and 'Reprint' depending on whether or not there are posted batches in the current audit report)* Enter the numbers of the audit reports you want to print or export. The default is the current report. A search is available.

Start a new page for each closed batch? Set this to start each closed batch at the top of a new page.

| | | | |
|----------------|------------------|--|--------|
| Author | DCP | | |
| Project | ZC60_000165.docx | | |
| Version | 1.0 | | 4 of 4 |