



Global 3000 Service Pack Note

Global 3000 Cash Manager - Revisions to Bank Reconciliation Import

| | | | |
|----------------|------------------|--|--------|
| Author | DCP | | |
| Project | ZC60_000174.docx | | |
| Version | 1.0 | | 1 of 4 |

INTRODUCTION

This service pack provides additional options when importing bank reconciliation details.

When defining the structure of import files for Bank Reconciliation, the “Payment Amount” and “Receipt Amount” columns currently define which column is used for each of these import values. If the columns are different, the imported value, regardless of sign is treated as either a Payment or Receipt. If the Payment and Receipt columns are the same, positive numbers are posted as Receipts and negative numbers as Payments.

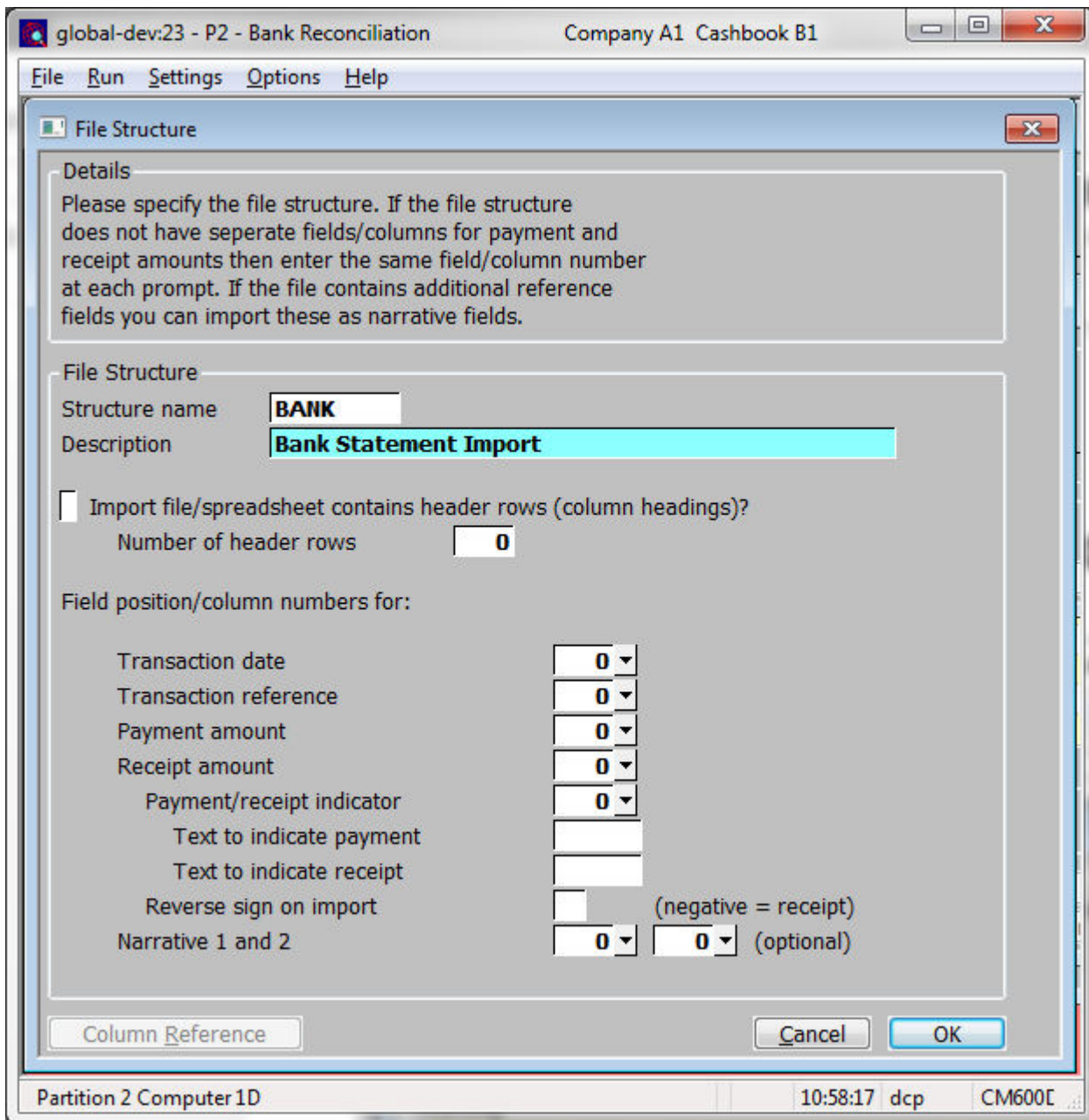
This service pack introduces the following new settings available when defining the structure of a Bank Reconciliation import file. These allow a broader range of import files to be processed:

- **Payment/Receipt indicator.** This new setting can be used for import files where the payment and receipt values are in the same column and of the same sign. It is used as the indicator for the payment or receipt.
- **Text to indicate receipt/Text to indicate payment.** The contents of the payment/receipt indicator column are compared with these two new settings to determine whether the imported value is a payment or receipt.
- **Reverse sign on import.** By default the import treats positive numbers as receipts and negative numbers as payments, this option (when selected) causes the import to treat negative numbers as receipts and positive numbers as payments.

In addition the import process has been updated to ignore trailing text when importing payment/receipt values. For example where a currency is specified “1234.56 GBP”, the trailing text is ignored by the import and only the numeric values are processed.

| | | |
|----------------|------------------|--------|
| Author | DCP | |
| Project | ZC60_000174.docx | |
| Version | 1.0 | 2 of 4 |

CM Bank Reconciliation – Import File Structure



Field position/column number for the payment/receipt indicator *(Only available if the payment and receipt amounts are located in the same column).* Set this to the numerical field position (within a line) or column number (if importing from a spreadsheet) in which the payment/receipt indicator is located. The payment/receipt indicator is used to determine whether the value is a payment or receipt in files where the payment and receipt amounts are located in the same column and have the same sign.

Text to indicate payment *(Only available if the payment and receipt amounts are located in the same column and a payment/receipt indicator is in use).* Set this to the text that will appear in the payment/receipt indicator column if the incoming value is a payment.

| | |
|----------------|------------------|
| Author | DCP |
| Project | ZC60_000174.docx |
| Version | 1.0 |

Text to indicate receipt *(Only available if the payment and receipt amounts are located in the same column and a payment/receipt indicator is in use).* Set this to the text that will appear in the payment/receipt indicator column if the incoming value is a receipt.

Reverse sign on import *(Only available if the payment and receipt amounts are located in the same column and a payment/receipt indicator is NOT in use).* By default the import treats positive numbers as receipts and negative numbers as payments, when this option is set it causes the import to treat negative numbers as receipts and positive numbers as payments.

| | | | |
|----------------|------------------|--|--------|
| Author | DCP | | |
| Project | ZC60_000174.docx | | |
| Version | 1.0 | | 4 of 4 |