



Global 3000 Service Pack Note

CM Close Period - Revaluation

Author	SHUT	
Service Pack	ZC60_000227	
Version	Global 3000 Service Pack Note	1 of 3

INTRODUCTION

This service pack introduces the ability to control whether or not close period invokes revaluation.

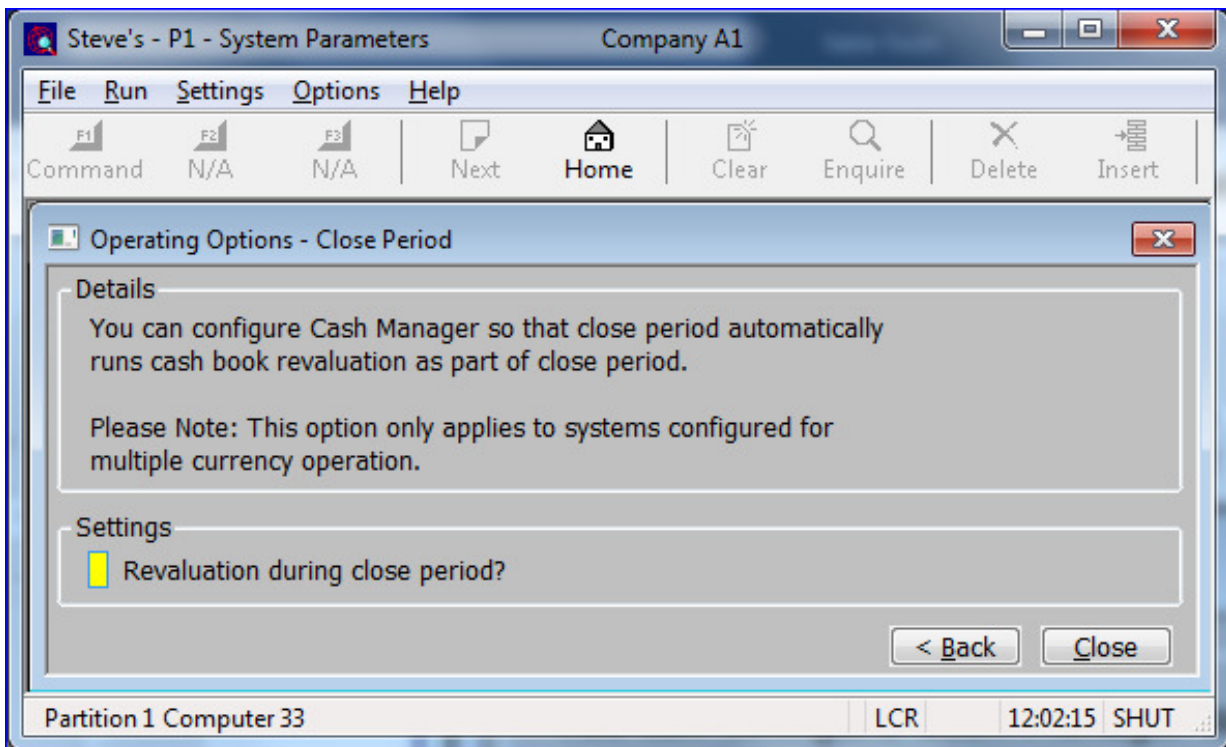
In multi-currency systems close period automatically invokes revaluation (before the period is closed).

These changes allow this to be controlled by a new setting in the 'Operating Options' within Cash Manager system parameters.

Author	SHUT	
Service Pack	ZC60_000227	
Version	Global 3000 Service Pack Note	2 of 3

DOCUMENTATION CHANGES

Cash Manager Parameters – Operating Options – Close Period Window



This window appears when you complete your responses in the Cash Manager Parameters – Operating Options Configuration window.

Purpose This window allows you to control how close period in Cash Manager functions.

Please Note This window is suppressed in single currency systems.

The prompt is:

Revaluation during close period? When set, close period automatically invokes revaluation. This takes place immediately before the period is closed.

Author	SHUT	
Service Pack	ZC60_000227	
Version	Global 3000 Service Pack Note	3 of 3