



Global 3000 Service Pack Note

Transaction History Report

Author	DCP		
Project	ZD60_000157.doc		
Version	1.0		1 of 4

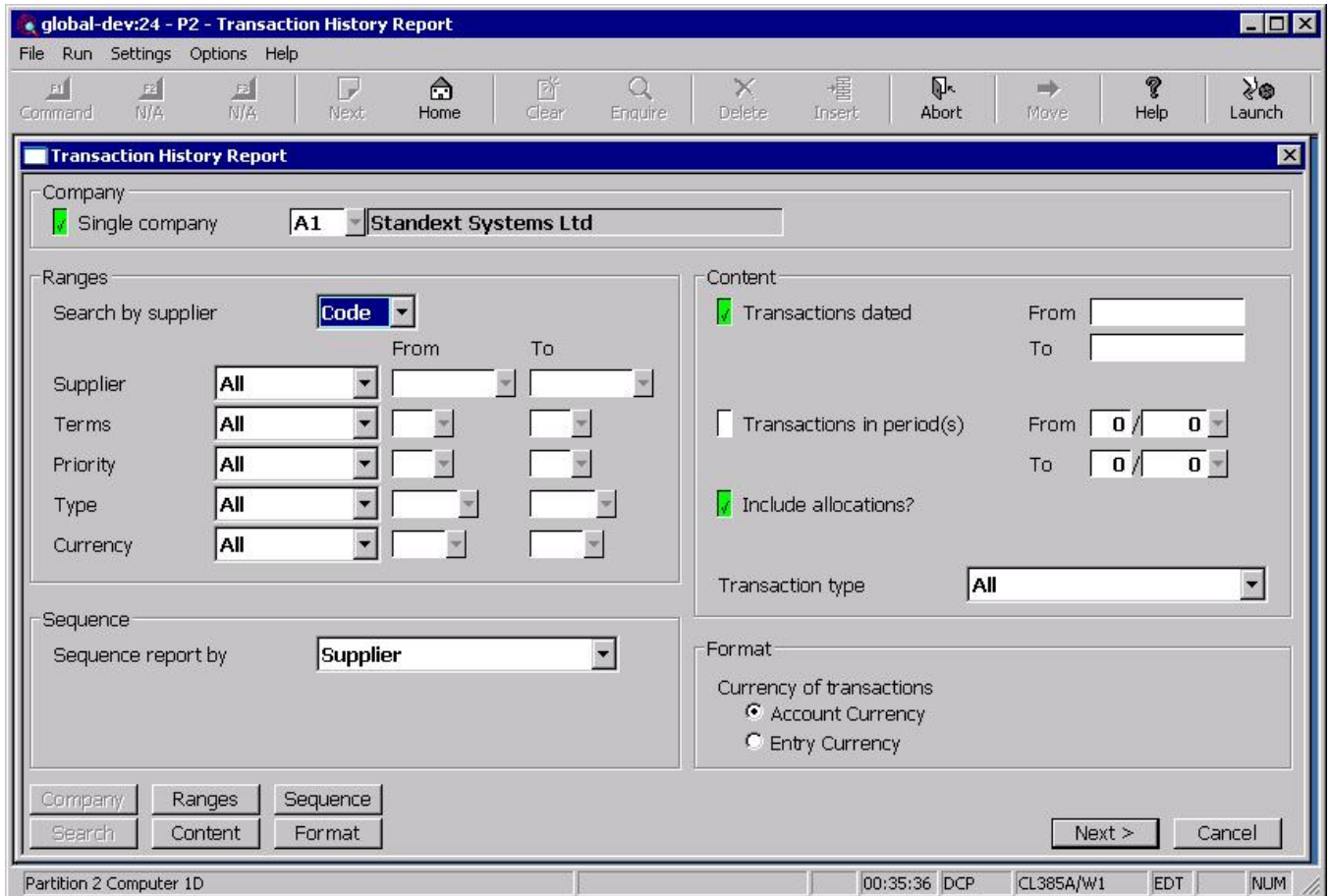
INTRODUCTION

This service pack provides the ability to print the transaction history report for a range of periods (rather than a range of dates) and to (optionally) include allocation details for the transactions printed.

This service pack introduces two updates to the Transaction History Report (in both Debtors Ledger and Creditors Ledger). The first update provides the ability to print the report for a range of financial periods rather than a range of dates. The second update provides the ability to print allocation details (as per the daybook report) for the transactions printed.

Author	DCP		
Project	ZD60_000157.doc		
Version	1.0		2 of 4

Transaction History Report Window (CL)



Transactions in period(s) *(Only if a range of dates has not been specified)* Set this to limit the transactions printed to those within a range of financial periods.

From period *(Only if 'Transactions in period(s) is set)* Transactions entered in periods earlier than this are excluded from the report.

From period *(Only if 'Transactions in period(s) is set)* Transactions entered in periods later than this are excluded from the report.

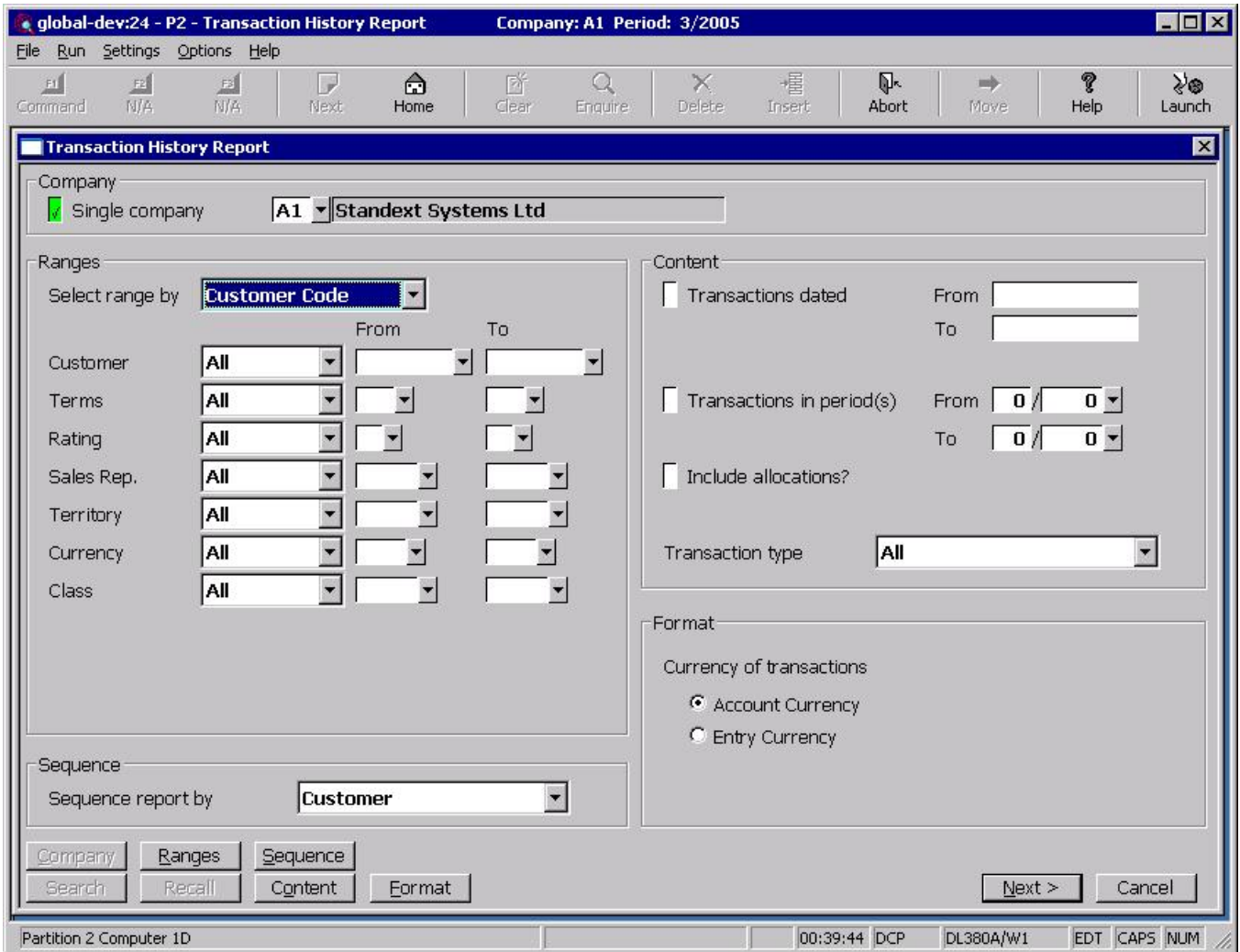
Include allocations? Set this to print allocation details (on separate lines) for the transactions printed.

Note In some cases all or some of the allocation details for a transaction may have been purged, in these cases only those allocation details remaining on the system are printed.

Note Allocation details are not exported.

Author	DCP
Project	ZD60_000157.doc
Version	1.0
	3 of 4

Transaction History Report Window (DL)



Transactions in period(s) *(Only if a range of dates has not been specified)* Set this to limit the transactions printed to those within a range of financial periods.

From period *(Only if 'Transactions in period(s) is set)* Transactions entered in periods earlier than this are excluded from the report.

From period *(Only if 'Transactions in period(s) is set)* Transactions entered in periods later than this are excluded from the report.

Include allocations? Set this to print allocation details (on separate lines) for the transactions printed.

Note In some cases all or some of the allocation details for a transaction may have been purged, in these cases only those allocation details remaining on the system are printed.

Note Allocation details are not exported.

Author	DCP
Project	ZD60_000157.doc
Version	1.0
	4 of 4