



Global 3000 Service Pack Note Customer Diary Statements

Author	DCP		
Project	ZD60_000159.doc		
Version	1.0		1 of 4

INTRODUCTION

This service pack provides the options recently added to individual customer statements when producing diary statements.

This service pack introduces three new options when printing diary statements. The new options mirror those recently added to individual customer statements.

It should be noted that unlike individual statements, the new options only apply to 'as balance forward' style statements.

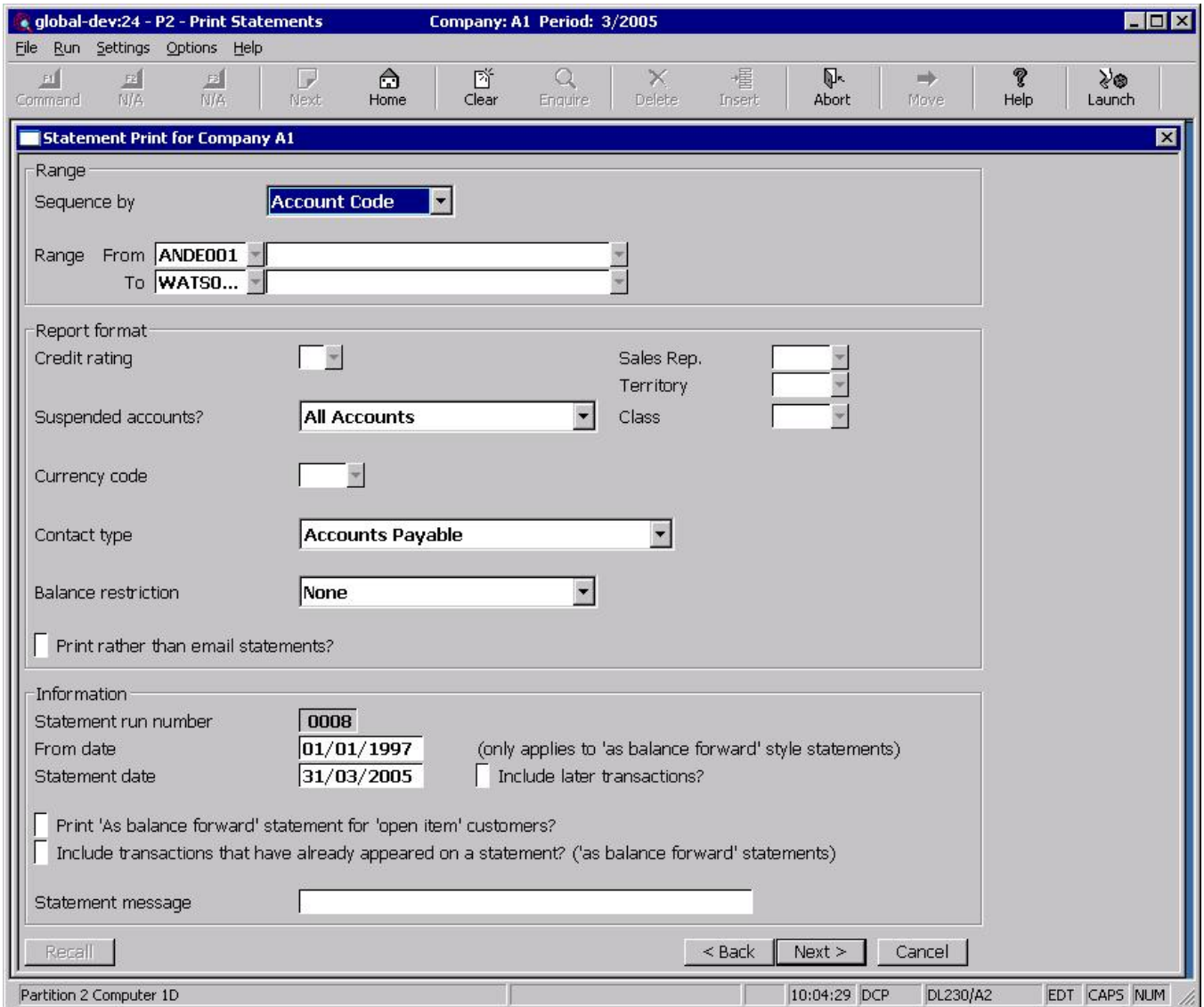
The changes made are:

- A new date prompt labelled "From date" has been added to the statement options window. The new prompt defaults to the start date of the first period defined on the calendar. Transactions dated prior to the 'From date' are excluded from the statement.
- A new prompt labelled 'Print 'as balance forward statements' for open item customers?' has been added to the statement options window. When set, customers with a balance method of 'open item' have an 'as balance forward' style statement produced.
- A new prompt labelled 'Include transactions that have already appeared on a statement?' has been added to the statement options window. When set, transactions (dated on or after the 'from date') are included on the statement even if they have already appeared on a diary statement.

Author	DCP	
Project	ZD60_000159.doc	
Version	1.0	2 of 4

DOCUMENTATION CHANGES

Statement Print Window



From date *(Only applies to 'as balance forward' style statements).* Transactions dated earlier than this date are excluded from the statement. This defaults to the earliest date on the calendar.

Note When producing an 'as balance forward' style statement, the balance forward line is dated as follows.

If a 'from date' has been specified (i.e. the default 'from date' has not been selected) the balance forward line is dated with the 'from date'.

If the default 'from date' has been selected the balance forward line is dated with the date of the customer's last statement. If the customer has not had a previous statement the end date of the previous period is used.

As balance forward statement for open item customers? *(Only applies to customers whose balance method is open item).* Set this to produce an 'as balance forward style' statement.

Author	DCP
Project	ZD60_000159.doc
Version	1.0
	3 of 4

Include transactions that have already appeared on a statement?

(Only applies to 'as balance forward style' statement). Set this to include transactions (dated on or after the 'from date') even if they have already appeared on a diary statement.

Author	DCP		
Project	ZD60_000159.doc		
Version	1.0		4 of 4