



Global 3000 Service Pack Note

General Ledger Postings Report

Author	DCP		
Project	ZD60_000238.doc		
Version	1.0		1 of 3

INTRODUCTION

This service pack updates Debtors Ledger to provide a replacement for the redundant GL Transfer Report.

Debtors Ledger has been updated to provide a new report named 'General Ledger Postings Report'. This is available as a stand-alone option on the End of Period Menu (in Debtors Ledger).

When selected it prints a report listing all General Ledger analysis generated by the module (in GL company, profit centre and account sequence) for the current period.

The report can be printed in either standard or PDF format depending on the selection in the report options window. If printed in PDF format it includes the General Ledger transaction number generated when the analysis was posted.

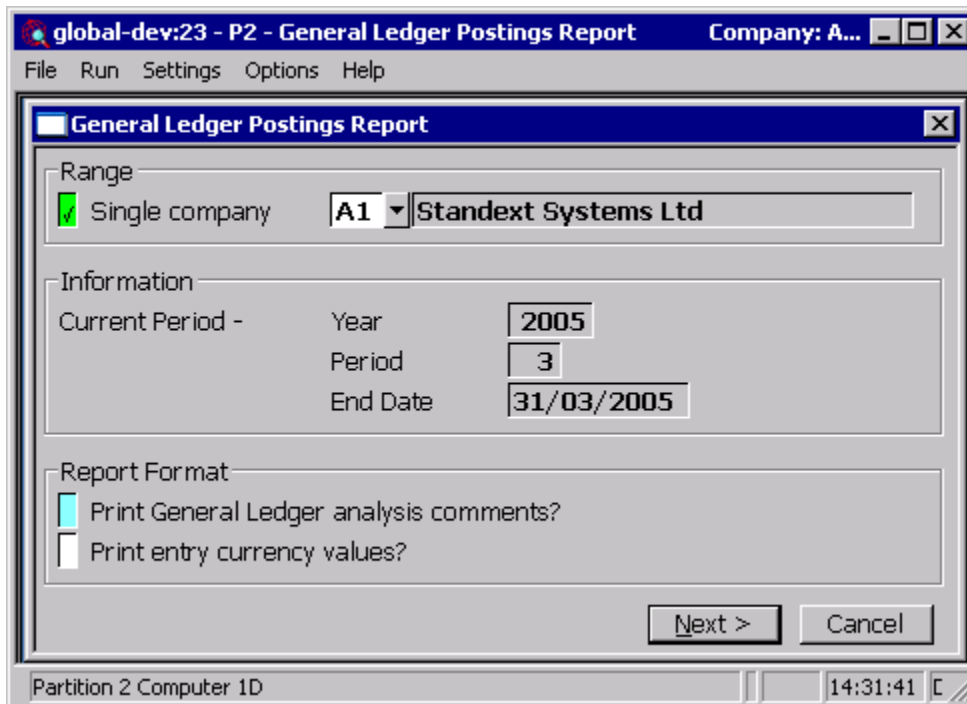
Note, printing reports in PDF format requires an up-to-date copy of either PDF_In_The_Box.dll or All_In_The_Box.dll to be present on each GX client used to perform the document generation.

Please note, the menu file for Debtors Ledger has been updated to include the 'General Ledger Postings Report' option in the End of Period Processing Menu.

Please copy DL-Menus from your program unit (\$P) to your data unit (DLD) after applying this Service Pack. This step is not required if service pack ZM60_000080_000 has been applied and unit 'G3M' has been assigned to your program unit (\$P).

Author	DCP	
Project	ZD60_000238.doc	
Version	1.0	2 of 3

DL General Ledger Postings Report



This window appears when you select 'General Ledger Postings Report' from the End of Period Processing Menu.

Purpose This window enables you to enter selection options for the report

Single company *(Only for multi-company systems)* Set this to choose a company for the report, otherwise the report is printed for each company in turn.

Current year, period and end date. *(Display only.)* Details of the current year and period are displayed here.

Print General Ledger analysis comments? *(Only applies to detailed reports.)* Set this to print the General Ledger analysis comments.

Print entry currency values? *(Only applies to detailed reports in multi-currency systems.)* Set this to print the value of each transaction in entry currency as well as its value in base currency.

Note Whether the summary or detailed report is required is chosen in the print options window. If a summary report is selected the responses to the above two prompts are ignored.

Author	DCP	
Project	ZD60_000238.doc	
Version	1.0	3 of 3