



# Global 3000 Service Pack Note Customer Address List

<b>Author</b>	DCP		
<b>Project</b>	ZD60_000322.docx		
<b>Version</b>	1.0		1 of 4

## INTRODUCTION

This service pack provides the ability to print the customer address list for a range of sales representatives or territories.

The Customer Address List has been updated to introduce new options to restrict the report to a range of territories and sales representatives. Both the territory and sales representative are now printed on the report.

In addition, the Customer List has been updated to introduce new options to restrict the report to a range of territories.

<b>Author</b>	DCP		
<b>Project</b>	ZD60_000322.docx		
<b>Version</b>	1.0		2 of 4

## DOCUMENTATION CHANGES

# Customer List Window

The screenshot shows a software window titled "global-dev:23 - P2 - Print Customer List" with a subtitle "Company: A1 Period: 3/2005". The window has a menu bar with "File", "Run", "Settings", "Options", and "Help". Below the menu bar is a toolbar with icons for "Command", "N/A", "N/A", "Next", "Home", "Clear", "Enquire", "Delete", "Insert", and "Abort".

The main content area is titled "Customer List Selection Criteria" and contains several sections:

- Companies:** A checked checkbox "Single company" is followed by a dropdown menu set to "A1" and a text field containing "Standext Systems Ltd".
- Accounts:** A dropdown menu set to "All" is followed by "From" and "To" fields, each with a dropdown arrow.
- Codes:** A table of settings with columns for the code name, a dropdown menu, and "From" and "To" fields with dropdown arrows.

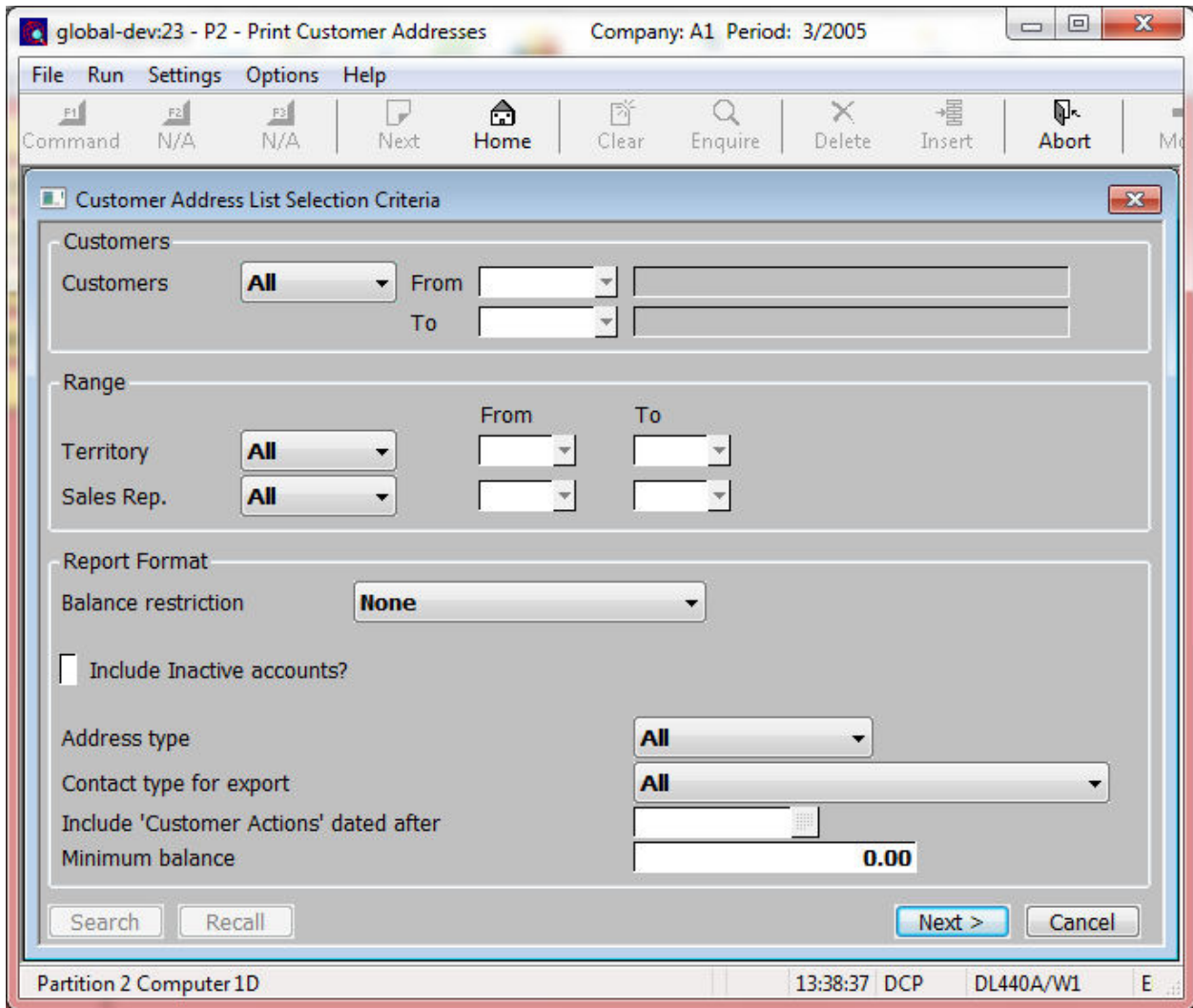
Code	Dropdown	From	To
Trading terms	All		
Credit rating	All		
Sales Rep.	All		
Territory	All		
Currency	All		
- Report Format:** Fields for "Minimum balance" (set to "0.00"), "Last active date", and "Include customers" (set to "All customers").
- Include contacts?** A checked checkbox.

At the bottom of the window are buttons for "Search", "Recall", "Next >", and "Cancel". The status bar at the very bottom shows "Partition 2 Computer 1D", "13:37:01 DCP", and "DL430A/W1".

**Territory (from...to)** Set these to limit the customers included to those for a single or range of territories.

<b>Author</b>	DCP
<b>Project</b>	ZD60_000322.docx
<b>Version</b>	1.0
	3 of 4

# Customer Address List Window



**Territory (from...to)** Set these to limit the customers included to those for a single or range of territories.

**Sales Rep (from...to)** Set these to limit the customers included to those for a single or range of sales representatives.

<b>Author</b>	DCP		
<b>Project</b>	ZD60_000322.docx		
<b>Version</b>	1.0		4 of 4