



Global 3000

Service Pack Note

Debtors Ledger Bad Debt

Author	DCP	
Project	ZD60_000347.docx	
Version	1.0	1 of 2

INTRODUCTION

The requirement is to correctly adjust tax when bad debt is written off.

HMRC state that when writing off bad debt the tax adjustment should be posted to the input tax rather than the output tax.

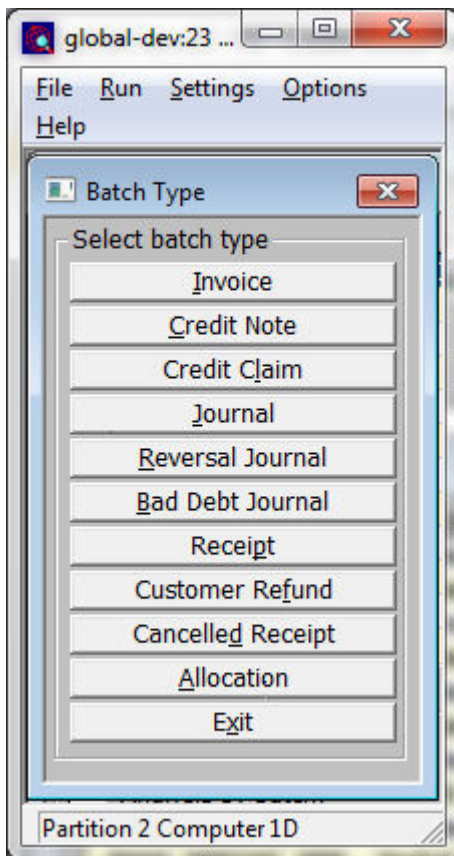
Transaction entry has been updated to include a new option when selecting the batch type.

The new batch type is labelled 'Bad Debt'. A bad debt batch is in effect a batch of credit journals where the tax is posted to the tax input account.

Please note, bad debt journals are not specifically identified as such on reports and show as standard credit journals.

DOCUMENTATION CHANGES

DL Transaction Entry – Batch Type Selection



Bad Debt Journal Select this when writing off bad debt. Bad debt journals are in effect standard credit journals that post tax to the input tax account as per HMRC guidelines.

Note Bad debt journals are not specifically identified as such on reports and show as standard credit journals.

Author	DCP		
Project	ZD60_000347.docx		
Version	1.0		2 of 2