



Global 3000 Service Pack Note

Debtors Ledger - Mandatory Customer Classifications

Author	DCP	
Project	ZD60_000380.docx	
Version	1.0	1 of 3

INTRODUCTION

This service pack provides the ability make customer classifications mandatory.

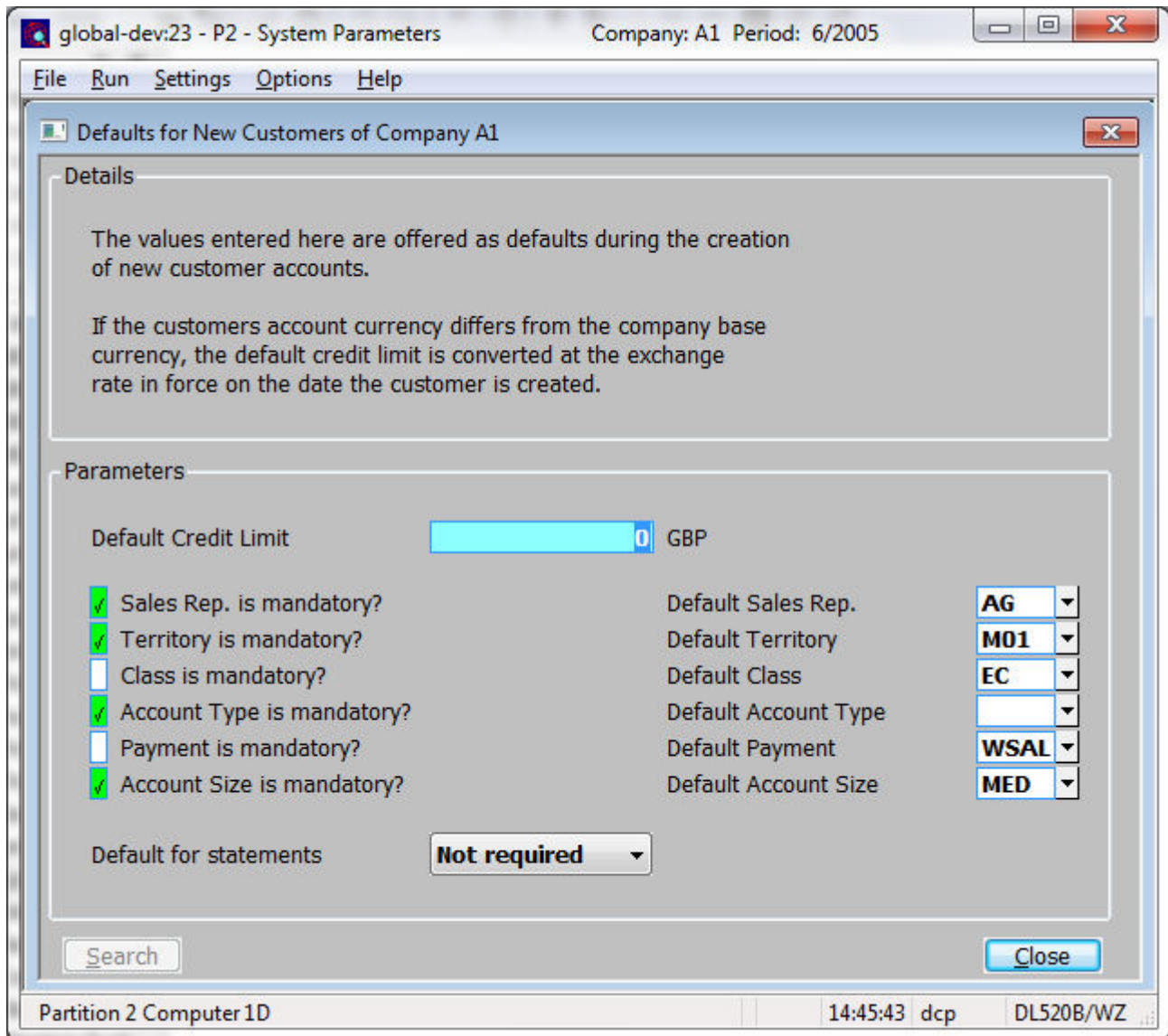
The following changes have been made:

The 'New Customer Defaults window within DL system parameters has been updated to include new options to make the customer classification codes (only those that are in use) mandatory and to allow the user to specify defaults.

Customer maintenance (company details) has been updated to take the above new parameters in to account.

Author	DCP	
Project	ZD60_000380.docx	
Version	1.0	2 of 3

DL System Parameters – New Customer Defaults



Customer classification is mandatory? *(Available for each classification code that is in use)* If this is set then customer maintenance prevents the user leaving the classification code blank.

Default customer classification *(Available for each classification code that is in use)* This can be used to specify a default customer classification code to be used when new accounts are created.

Note The above two prompts are labelled based on the customer classification line titles specified via the classification titles window.

Author	DCP	
Project	ZD60_000380.docx	
Version	1.0	3 of 3