



Global 3000 Service Pack Note

GL Trial Balance Export - Single Column Format

| | | | |
|----------------|-----------------|--|--------|
| Author | DCP | | |
| Project | ZG60_000058.doc | | |
| Version | 1.0 | | 1 of 4 |

INTRODUCTION

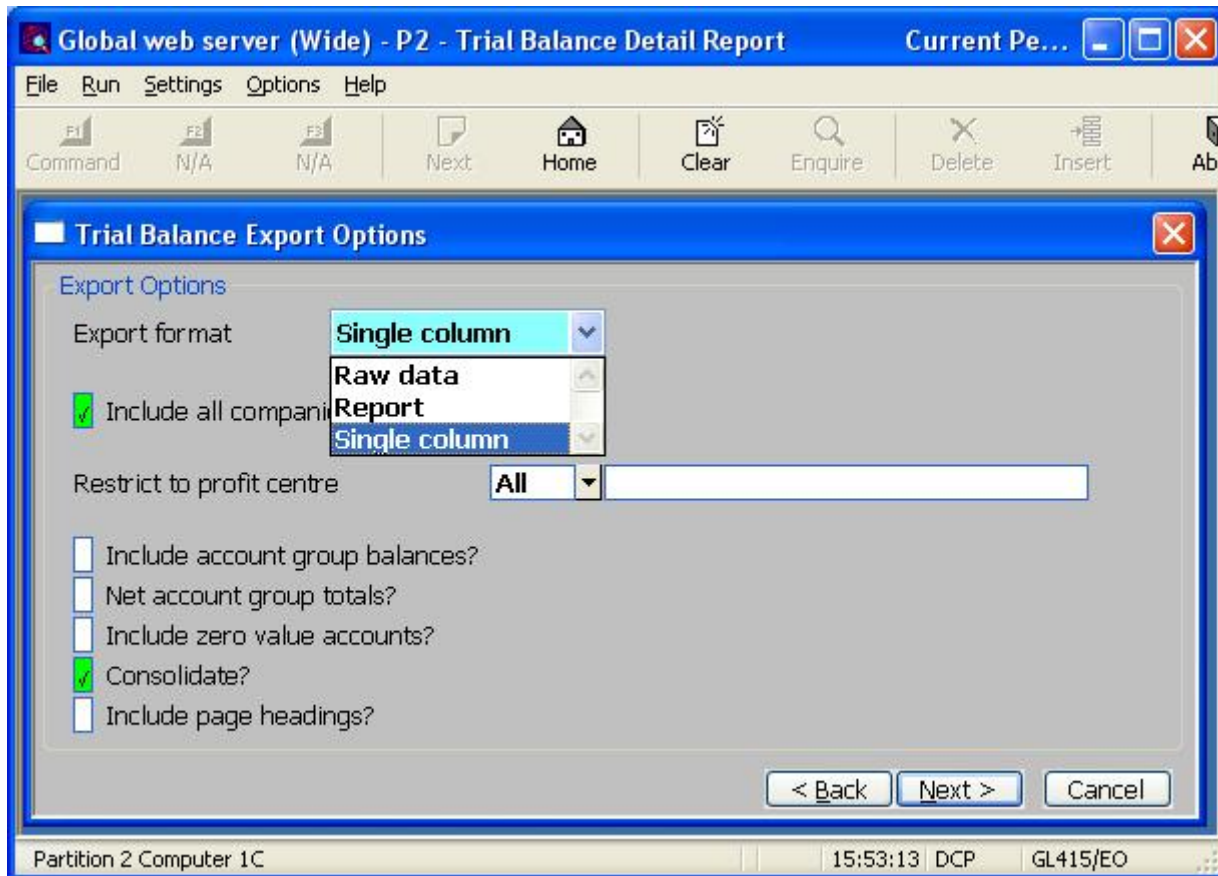
General Ledger Trial Balance has been updated to provide a new format for the CSV export file; the new format will be 'Single column'.

The General Ledger Trial Balance Report has been updated to provide an additional export format (labelled 'Single column'), when selected the content of the exported CSV consists of a single line of column titles followed by one line per company/profit centre/account combination with the values in single column format. The columns exported are:

- Company Id
- Profit Centre (omitted if the 'Consolidate' option is selected)
- Period End date
- Account Id
- Account Name
- Opening Balance (negative for credit values)
- Period Amount (negative for credit values)
- Closing Balance (negative for credit values)

| | | | |
|----------------|-----------------|--|--------|
| Author | DCP | | |
| Project | ZG60_000058.doc | | |
| Version | 1.0 | | 2 of 4 |

Trial Balance – Export Options Window



Export format

This controls the format of the exported file. The settings are:-

- Report, this creates a CSV export file which mirrors the printed report, details lines, total lines, underlines and optionally page headings are included along with two character 'line codes' which identify the line type.
- Raw data, this creates a CSV export file which consists of single lines per company, profit centre and account code combination; page headings, total lines and underlines are not included and the two character 'line codes' are not exported. Values are in double column format.
- Single column, this creates a CSV export file which consists of single lines per company, profit centre and account code combination; page headings, total lines and underlines are not included and the two character 'line codes' are not exported. Values are arithmetically signed in single column format.

| | |
|----------------|-----------------|
| Author | DCP |
| Project | ZG60_000058.doc |
| Version | 1.0 |

REPORT LAYOUT CHANGES

There are no changes to the printed versions of the reports.

Trial Balance

When the export format is 'Single column', the records in the csv file consist an initial line of column titles followed by detail lines. The following is an example of an export file when the format selected is 'Single column'.

```
"Company","Profit_Centre","Period_End","Account_Id","Account_Name","Opening_Balance","Period_Amount","Closing_Bal"  
"A1","MID","31/05/2008","A1000","Sales - Projectors",27693.51,1150.00,28843.51  
"A1","MID","31/05/2008","A1001","Sales - Highlighters",27693.51,1150.00,28843.51
```

| | | | |
|----------------|-----------------|--|--------|
| Author | DCP | | |
| Project | ZG60_000058.doc | | |
| Version | 1.0 | | 4 of 4 |