



# Global 3000 Service Pack Note

## Copy Actuals to Forecasts

<b>Author</b>	Rick Robinson	
<b>Project</b>	Document3	
<b>Version</b>	1.0	1 of 2

## INTRODUCTION

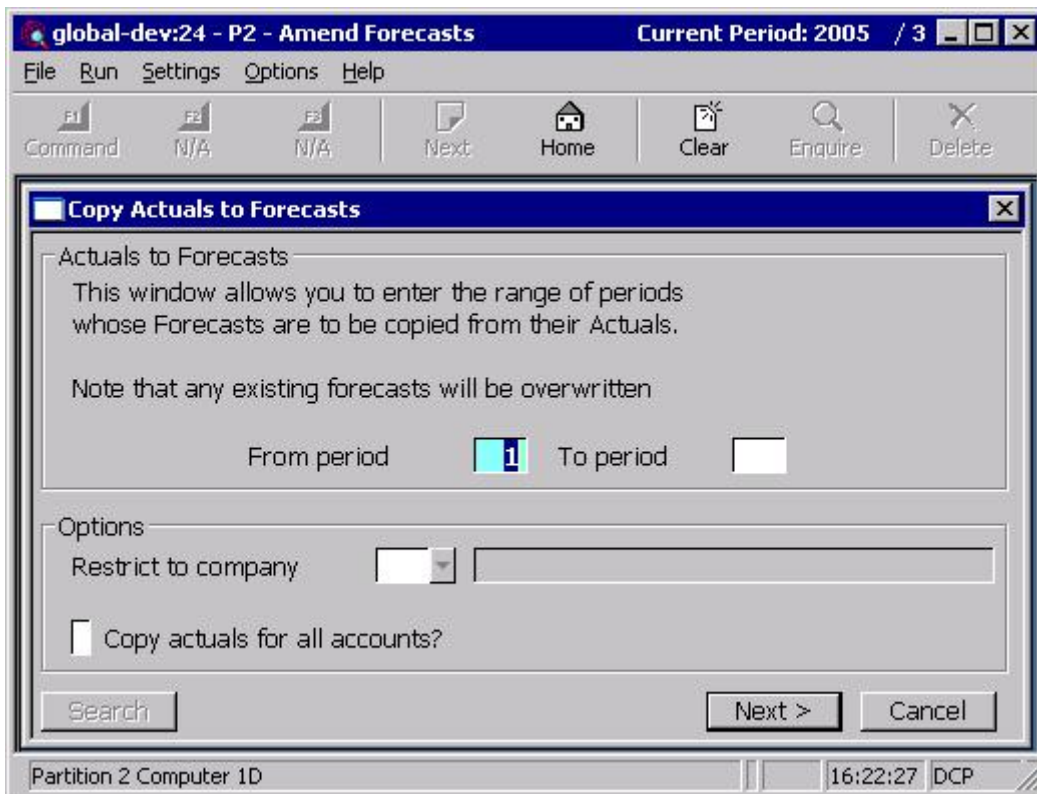
This service pack provides the ability to copy actuals to forecasts for all accounts regardless of whether or not the account has an existing budget or forecast. In addition the option to limit the copy of actuals to a single company has been included.

A new option titled 'Restrict to company' has been added to the 'Copy Actuals to Forecasts' window.

A second new option titled 'Copy actuals for all accounts' has also been added to the 'Copy Actuals to Forecasts' window. This new option only applies to account groups defined as holding budgets and forecasts at individual account level.

## DOCUMENTATION CHANGES

### Copy Actuals to Forecasts



#### **Restrict to company**

This is used to restrict the copy of actuals to forecast to a single company, if you wish to copy actuals to forecasts for all companies leave this prompt blank. A search is available.

#### **Copy actuals for all accounts**

When set actuals are copied to all accounts regardless of whether or not a budget or forecast has already been defined. When not set actuals are only copied for accounts that already have a budget or forecast.

#### **Note**

This only applies to accounts within groups configured to hold budgets and forecasts at individual account level.

<b>Author</b>	Rick Robinson	
<b>Project</b>	Document3	
<b>Version</b>	1.0	2 of 2