



Global 3000 Service Pack Notes

GL Enquiries - View Journal

| | | |
|----------------|-----------------|--------|
| Author | DCP | |
| Project | ZG60_000098.doc | |
| Version | 1.0 | 1 of 6 |

INTRODUCTION

This service pack provides the ability to view GL journal details (including the whole batch) from within GL Enquiries.

The changes introduce a new button labelled 'View Journal' to the transaction windows within General Ledger Account Enquiries, Budget Comparison Enquiries, Profit Centre Enquiries, Group Enquiries and Company Performance Enquiries. When pressed an alternate view of the current journal is shown, this view also includes an option to view the whole batch in which the journal was included.

DOCUMENTATION CHANGES

General Ledger Account Enquiries – Transaction Windows

| Period | Trans No. | Date | Type | Narrative | Posted? | Amount |
|--------|-----------|------------|----------|-----------------------------|---------|------------|
| 1 | 20 | 01/01/2005 | Journal | Anderton Ltd | ✓ | 823.26 C |
| 1 | 42 | 15/01/2005 | Currency | Gilera Cartoleria | ✓ | 1,320.50 C |
| 1 | 50 | 15/01/2005 | Journal | A Neal & Sons | ✓ | 1,545.00 C |
| 1 | 54 | 15/01/2005 | Journal | Blakelock Insurance Brokers | ✓ | 920.00 C |
| 1 | 146 | 14/01/2005 | Journal | Brownhouse of Preston | ✓ | 1,170.13 C |
| 1 | 230 | 16/01/2005 | Journal | Design Graphics Ltd | ✓ | 1,232.50 C |
| 1 | 231 | 16/01/2005 | Journal | Anderton Ltd | ✓ | 832.50 C |

Details

Batch: 3 Global 3000 Debtors Ledger
 Profit centre: STH London Office
 Narrative: Anderton Ltd
 Comments: INV00097
 ANDER23892
 Sales Reps:
 Tax class: NC No Tax Class

Source Details

Source module: DL
 Source batch: 50
 Source Item: 1
 Source reference: INV00097
 Autopost report: 25

Buttons: Drill down, View Journal, Close

Partition 2 Computer 1D | 17:33:18 DCP | GL220A/W5 | DSP CAPS NUM

View Journal Press this for an alternate view of the current General Ledger journal transaction. The alternate view includes an option to view the whole batch in which the journal was included.

| | |
|----------------|-----------------|
| Author | DCP |
| Project | ZG60_000098.doc |
| Version | 1.0 |

2 of 6

General Ledger Budget Comparison Enquiries – Transaction Windows

global-dev:23 - P2 - Account Enquiry Current Period: 2005 / 3

File Run Settings Options Help

Profit Centre Analysis Account A1001 (Sales - Highlighters)

| Period | Trans No. | Date | Type | Narrative | Posted? | Amount |
|--------|-----------|------------|----------|--------------------------------|---------|------------|
| 1 | 21 | 01/01/2005 | Journal | Anderton Ltd | ✓ | 115.17 C |
| 1 | 43 | 15/01/2005 | Currency | Gilera Cartoleria | ✓ | 1,574.29 C |
| 1 | 517 | 18/01/2005 | Journal | Anderton Ltd | ✓ | 2,060.44 C |
| 1 | 518 | 18/01/2005 | Journal | Peak (Ins & Investment) Agents | ✓ | 1,825.00 C |
| 1 | 643 | 31/01/2005 | Journal | Price & Partners | ✓ | 940.50 C |
| 2 | 1013 | 20/02/2005 | Journal | Anderton Ltd | ✓ | 2,913.76 C |
| 3 | 1707 | 31/03/2005 | Journal | Credit Interest | ✓ | 100.00 C |

Details

Batch: 3 Global 3000 Debtors Ledger

Profit centre: STH London Office

Narrative: Anderton Ltd

Comments: INV00097
ANDER23892

Tax class: NC No Tax Class

Currency: []

Source Details

Source module: DL

Source batch: 50

Source item: 1

Source reference: INV00097

Autopost report: 25

Drill down View Journal Close

Partition 2 Computer 1D 17:34:49 DCP GL220/K2 DSP CAPS NUM

View Journal Press this for an alternate view of the current General Ledger journal transaction. The alternate view includes an option to view the whole batch in which the journal was included.

| | | |
|----------------|-----------------|--------|
| Author | DCP | |
| Project | ZG60_000098.doc | |
| Version | 1.0 | 3 of 6 |

General Ledger Profit Centre Enquiries – Transaction Windows

The screenshot shows a software window titled "global-dev:23 - P2 - Accounts by PC" with a menu bar (File, Run, Settings, Options, Help) and a status bar (Partition 2 Computer 1D, 17:36:00 DCP, GL230A/K2, DSP, CAPS, NUM). The main window displays "Transactions Account A1000 (Sales - Projectors) Profit Centre MID".

| Period | Trans No. | Date | Type | Narrative | Posted? | Amount |
|--------|-----------|------------|---------|-----------------------|---------|------------|
| 1 | 50 | 15/01/2005 | Journal | A Neal & Sons | ✓ | 1,545.00 C |
| 1 | 146 | 14/01/2005 | Journal | Brownhouse of Preston | ✓ | 1,170.13 C |
| 1 | 230 | 16/01/2005 | Journal | Design Graphics Ltd | ✓ | 1,232.50 C |
| 1 | 231 | 16/01/2005 | Journal | Anderton Ltd | ✓ | 832.50 C |
| 2 | 784 | 11/02/2005 | Journal | Andrew Leonard Ltd | ✓ | 3,899.00 C |
| 2 | 785 | 11/02/2005 | Journal | Watsons Plc | ✓ | 2,925.00 C |
| 2 | 1002 | 20/02/2005 | Journal | Anderton Ltd | ✓ | 416.25 C |

Below the table is a "Details" section with the following fields:

- Batch: 6 Global 3000 Debtors Ledger
- Profit centre: MID
- Narrative: A Neal & Sons
- Comments: INV00098
- NEAL/9752FS
- Sales Reps: [Empty]
- Tax class: NC No Tax Class

On the right, there is a "Currency" field and a "Source Details" section:

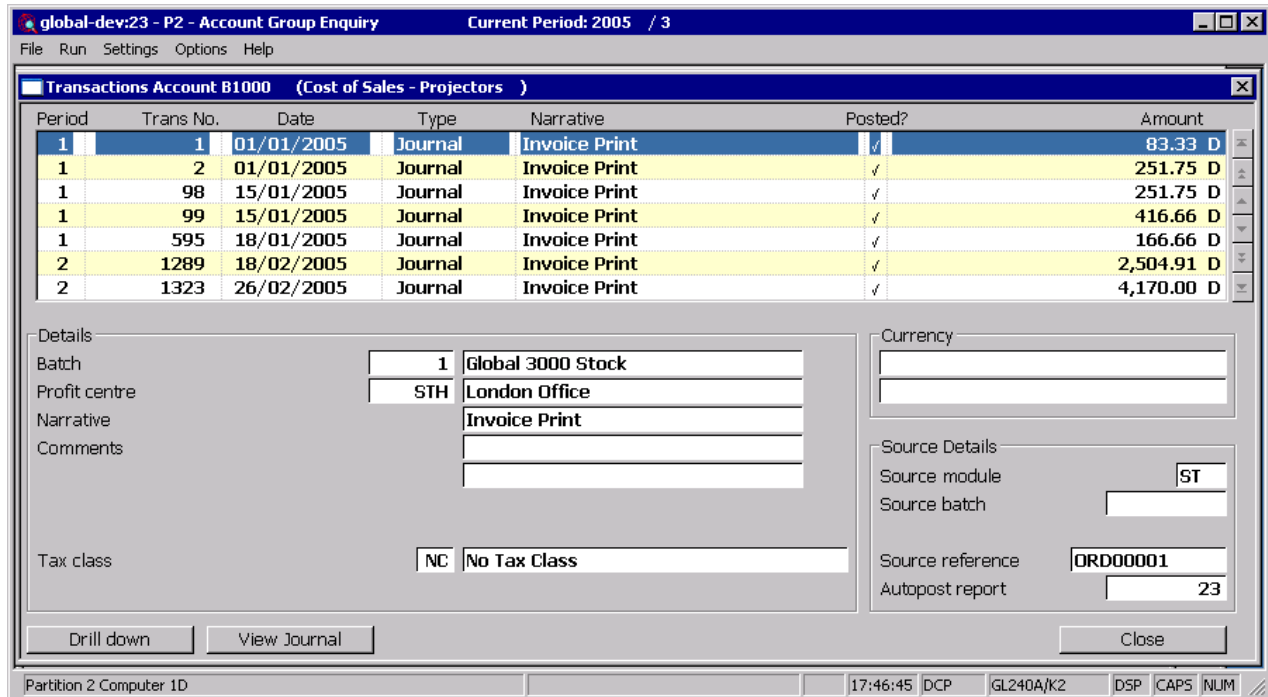
- Source module: DL
- Source batch: 52
- Source item: 1
- Source reference: INV00098
- Autopost report: 28

Buttons at the bottom include "Drill down", "View Journal", and "Close".

View Journal Press this for an alternate view of the current General Ledger journal transaction. The alternate view includes an option to view the whole batch in which the journal was included.

| | | |
|----------------|-----------------|--------|
| Author | DCP | |
| Project | ZG60_000098.doc | |
| Version | 1.0 | 4 of 6 |

General Ledger Group Enquiries – Transaction Windows



View Journal Press this for an alternate view of the current General Ledger journal transaction. The alternate view includes an option to view the whole batch in which the journal was included.

| | | |
|----------------|-----------------|--------|
| Author | DCP | |
| Project | ZG60_000098.doc | |
| Version | 1.0 | 5 of 6 |

General Ledger Company Performance Enquiries – Transaction Windows

global-dev:23 - P2 - Company Enquiry Current Period: 2005 / 3

File Run Settings Options Help

Transactions Account A1000 (Sales - Projectors)

| Period | Trans No. | Date | Type | Narrative | Posted? | Amount |
|--------|-----------|------------|----------|-----------------------------|---------|------------|
| 1 | 20 | 01/01/2005 | Journal | Anderton Ltd | ✓ | 823.26 C |
| 1 | 42 | 15/01/2005 | Currency | Gilera Cartoleria | ✓ | 1,320.50 C |
| 1 | 50 | 15/01/2005 | Journal | A Neal & Sons | ✓ | 1,545.00 C |
| 1 | 54 | 15/01/2005 | Journal | Blakelock Insurance Brokers | ✓ | 920.00 C |
| 1 | 146 | 14/01/2005 | Journal | Brownhouse of Preston | ✓ | 1,170.13 C |
| 1 | 230 | 16/01/2005 | Journal | Design Graphics Ltd | ✓ | 1,232.50 C |
| 1 | 231 | 16/01/2005 | Journal | Anderton Ltd | ✓ | 832.50 C |

Details

Batch: 6 Global 3000 Debtors Ledger

Profit centre: NTH Bolton Office

Narrative: Blakelock Insurance Brokers

Comment: INV00101

Sales Reps: BLAK/2094

Tax class: NC No Tax Class

Currency

Source Details

Source module: DL

Source batch: 52

Source item: 3

Source ref.: INV00101

Autopost report: 28

Drill down View Journal Close

Partition 2 Computer 1D 17:48:07 DCP GL25CA/W5 DSP CAPS NUM

View Journal Press this for an alternate view of the current General Ledger journal transaction. The alternate view includes an option to view the whole batch in which the journal was included.

| | | |
|----------------|-----------------|--------|
| Author | DCP | |
| Project | ZG60_000098.doc | |
| Version | 1.0 | 6 of 6 |