



Global 3000 Service Pack Note

General Ledger - Management Reports Column Type

Author	DCP	
Project	ZG60_000125.docx	
Version	1.0	1 of 3

INTRODUCTION

This service pack updates GL Statement Definitions to include a new column type that allows actuals or units to be printed in the same column.

The changes are as follows:

Statement column maintenance has been updated to include a new column contents option. The new option will be labelled 'Mixed'.

A column configured to hold 'Mixed actuals/units' allows financial data (i.e. an actual value) and non-financial data (i.e. no actual value but a unit quantity) to be shown in the same column.

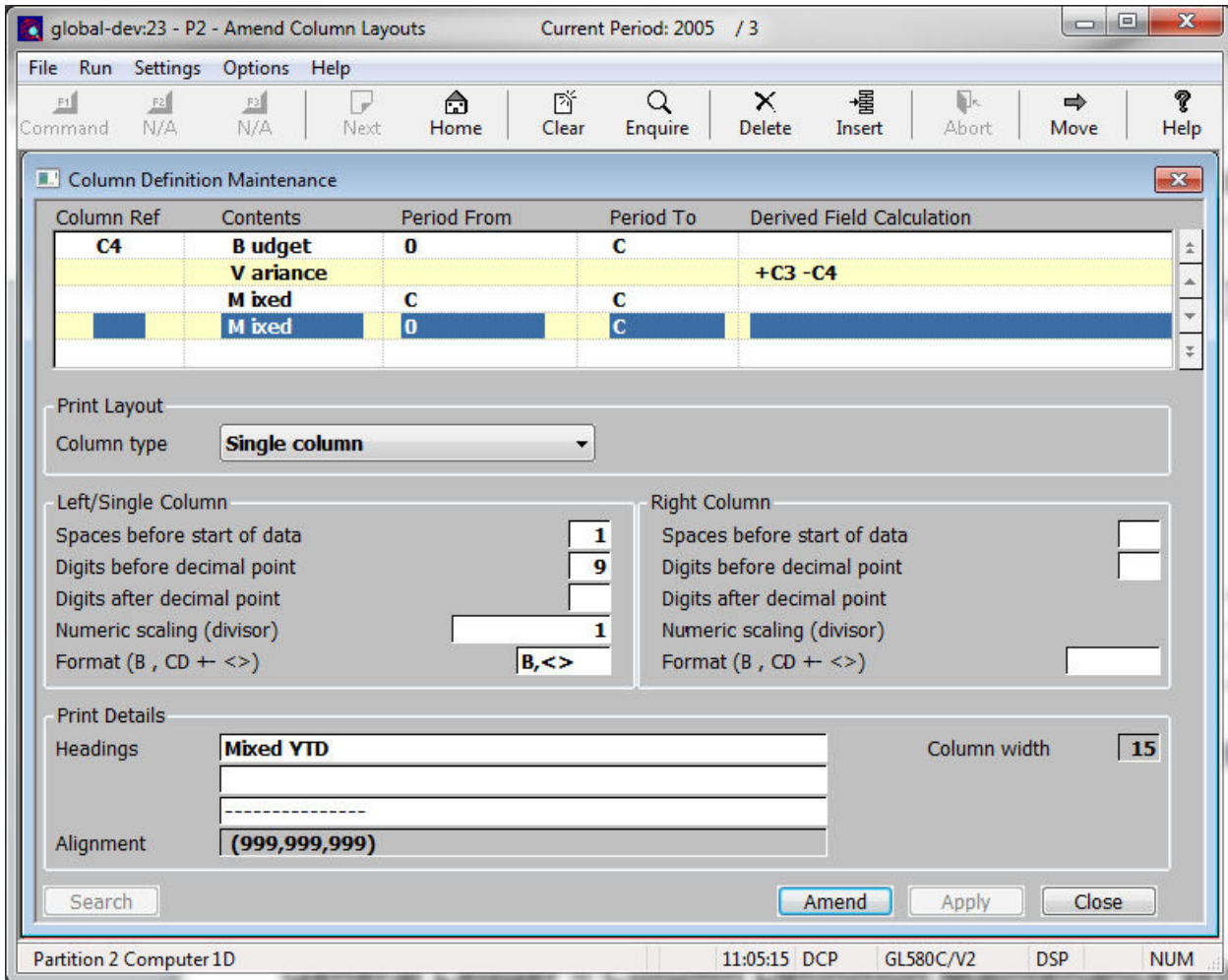
Care must be taken when using a 'mixed' column because all existing line and column settings (including registers etc.) will apply. This can result in unexpected results if a column contains both lines with values and lines with unit quantities.

Please note, mixed columns always show actual values in preference to unit quantities.

Author	DCP	
Project	ZG60_000125.docx	
Version	1.0	2 of 3

DOCUMENTATION CHANGES

General Ledger – Column Definition Maintenance Window



Column Contents This defines what is included in the column. A search listing valid responses is available. The options are:

- **A** for **actual** figures.
- **B** for **budget** figures.
- **C** for a **calculated** value. You define the calculation in the 'Derived field calculation' prompt.
- **F** for **forecasts**.
- **U** for **unit** quantities.
- **V** for the **variance** between, for example budget and actual figures. The variance is expressed as a percentage.
- **G** for the id of the account **group**.
- **N** for a **narrative** or description.
- **M** for a **mixed actuals/units** column. If there is an actual figure for the line it is shown, otherwise the unit quantity (should there be one) is shown.
- **%** for the **percentage** that the line contributes to a total.

Author	DCP
Project	ZG60_000125.docx
Version	1.0