



Global 3000 Service Pack Note

GL Financial Reporting - Cut-Off Period

Author	DCP		
Project	ZG60_000146.docx		
Version	1.0		1 of 3

INTRODUCTION

This service pack provides the ability to print GL financial reports up to a specific cut-off period.

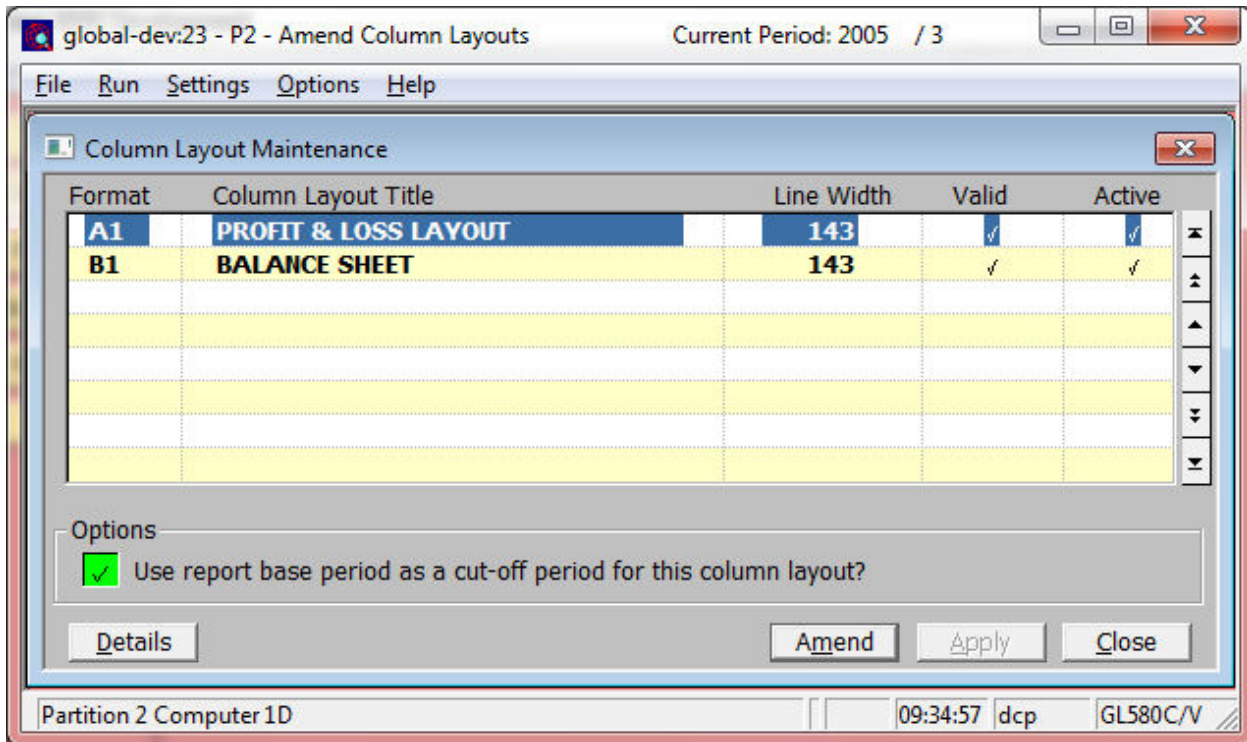
When printing General Ledger financial reports the period selected for the report is a base period from which all line and column calculations are made. There was no way to produce a report for a specific cut-off period.

The changes are to include a new option when defining column layouts. When the new setting (named 'Use report base period as a cut-off period for this column layout?') is set reports using the column definition do not include any figures (actuals, budgets, forecasts or units) that relate to periods later than the financial period selected when the report is printed.

NOTE: The new setting (when set) overrides the period range entered for a column (e.g. if a column is set to print values from periods 1 to 3 and the period selected for the report is period 2, the value printed for the column will be restricted to the total for periods 1 and 2).

Author	DCP	
Project	ZG60_000146.docx	
Version	1.0	2 of 3

Statement Definition - Column Layout Maintenance Window



Use report base period as a cut-off period for this column layout?

When this is set reports using the column definition do not include any figures (actuals, budgets, forecasts or units) that relate to periods later than the financial period selected when the report is printed.

Note

The above setting overrides the period range entered for each column in the layout. e.g. if a column is set to print values from periods 1 to 3 and the period selected for the report is period 2, the value printed for the column will be restricted to the total for periods 1 and 2.

Author	DCP	
Project	ZG60_000146.docx	
Version	1.0	3 of 3