



Global 3000 Service Pack Note

General Ledger - Control Accounts

| | | | |
|----------------|------------------|--|--------|
| Author | DCP | | |
| Project | ZG60_000184.docx | | |
| Version | 1.0 | | 1 of 3 |

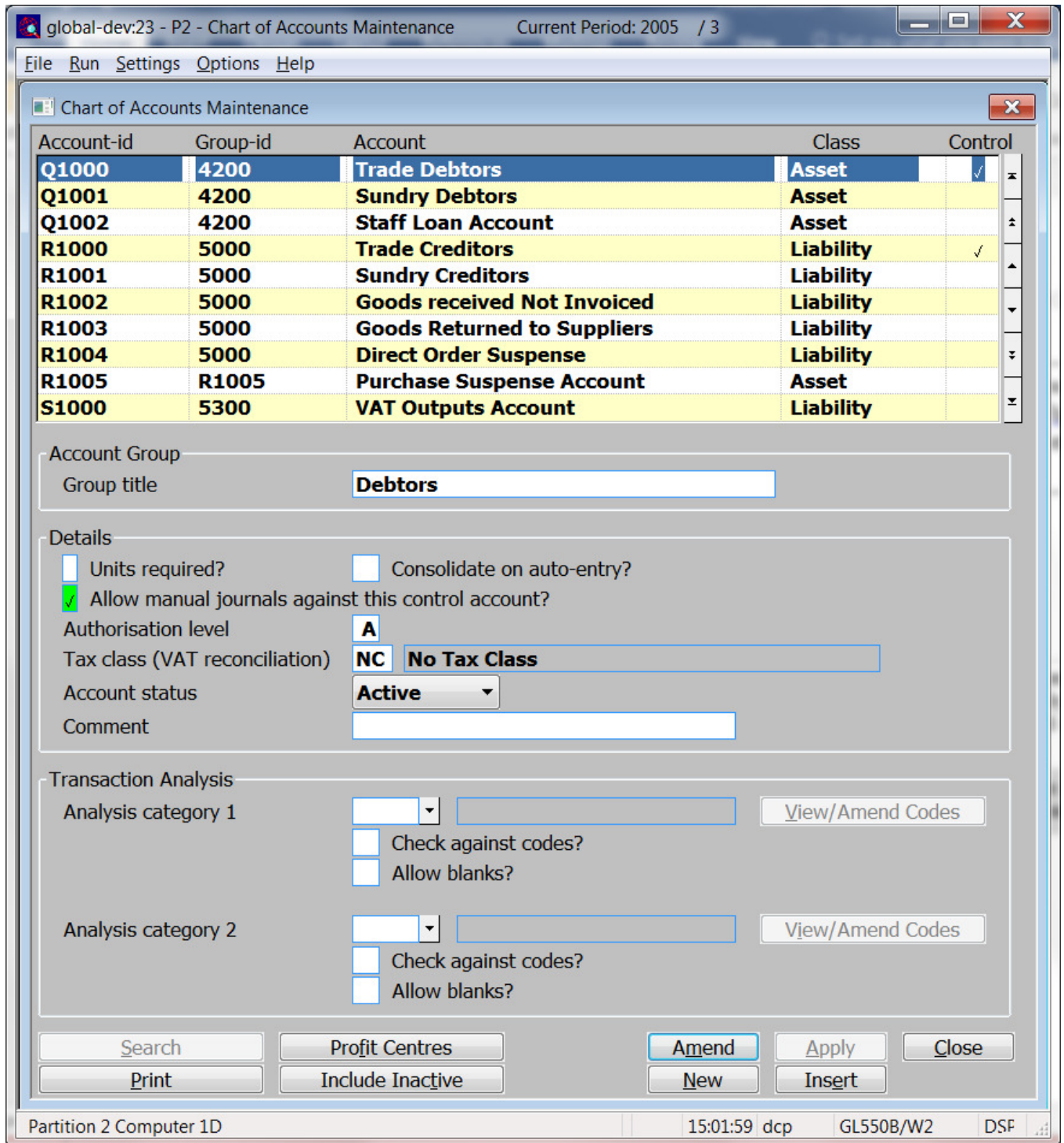
INTRODUCTION

This service pack allows journals to be entered against control accounts within General Ledger.

The changes introduce a new option in chart of accounts maintenance. The new option (labelled 'Allow manual journals against this control account?') allows journals and accruals to be entered against control accounts. The new option only applies to General Ledger and transactions entered in other modules cannot be analysed against control accounts.

| | | |
|----------------|------------------|--------|
| Author | DCP | |
| Project | ZG60_000184.docx | |
| Version | 1.0 | 2 of 3 |

Chart of Account Maintenance



Allow manual journals against this control account?

(Only available for control accounts). Set this if manual journals and accruals are allowed against this control account. This setting only applies to transactions entered via General Ledger; transactions entered in other modules cannot be analysed against control accounts.

Note

If the above option is not set, a user with specific authorisation (via the authorisation system) can still enter journals against control accounts.

| | |
|----------------|------------------|
| Author | DCP |
| Project | ZG60_000184.docx |
| Version | 1.0 |
| | 3 of 3 |