



Global 3000 Service Pack Note

GL Transaction Enquiries - Filter by Source Module

Author	DCP		
Project	ZG60_000190.docx		
Version	1.0		1 of 2

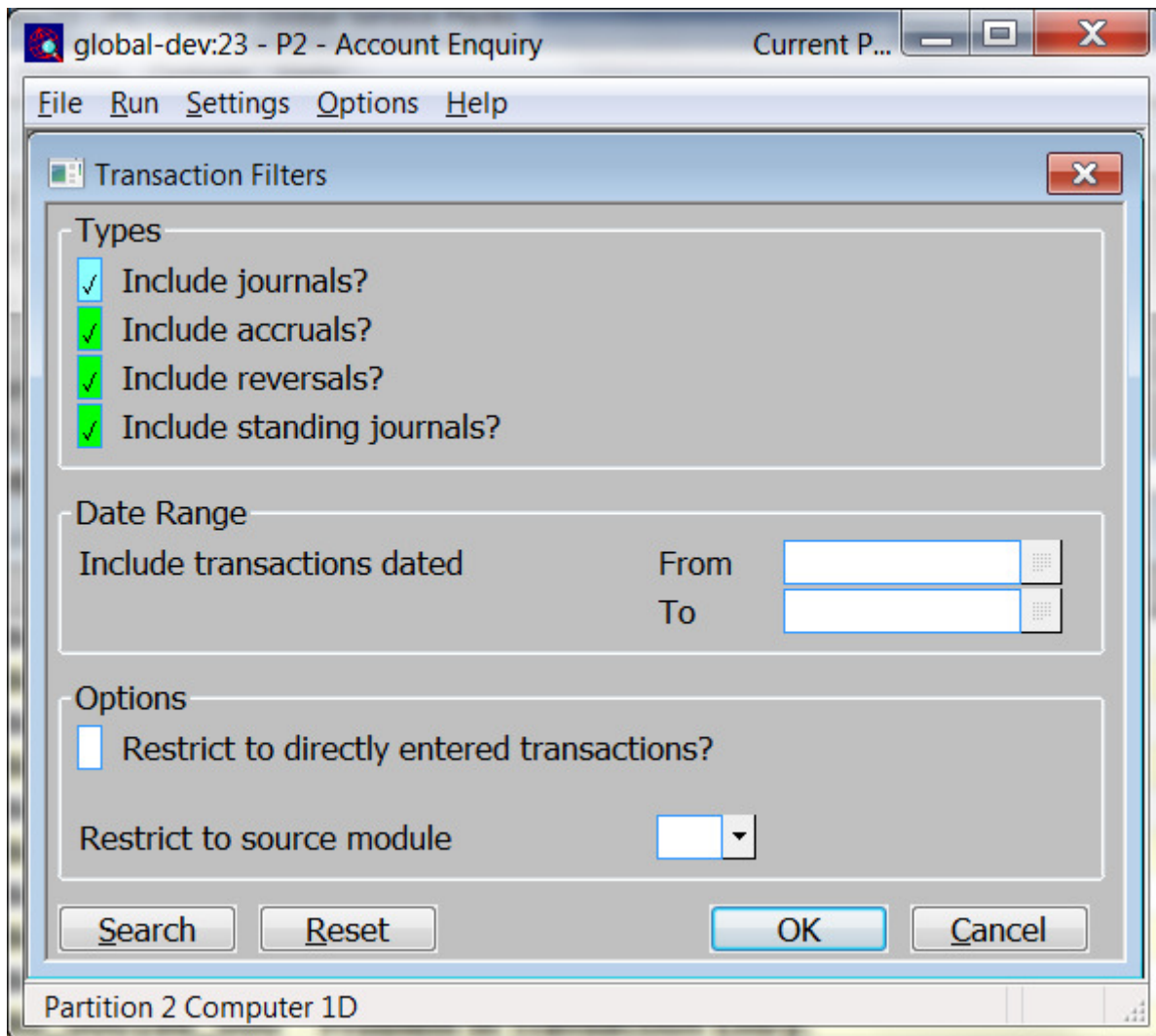
INTRODUCTION

This service pack updates the GL transaction enquiry filters to provide the option to filter by source module.

The changes introduce two new settings within the GL transaction enquiry filters. The first is labelled 'Restrict to directly entered transactions' and the second is labelled 'Restrict to source module'.

DOCUMENTATION CHANGES

Transaction Filters



Restrict to directly entered transactions?

When set only transactions which were entered directly (via transaction entry) are included.

Restrict to source module

*(Only if 'Restrict to directly entered transactions' is **not** set).* Select a source module (based on the list of auto-entry interfaces defined for the ledger), once selected the transactions shown are limited to only those transferred into General Ledger from the selected source module. A look-up is available.

Author	DCP	
Project	ZG60_000190.docx	
Version	1.0	2 of 2