



Global 3000 Service Pack Note Exchange Rate Maintenance

Author	DCP		
Project	ZM60_000326		
Version	1.0		1 of 4

INTRODUCTION

This service pack provides a number of improvements to exchange rate maintenance which include providing the ability to maintain exchange rates outside of system parameters.

The changes are:

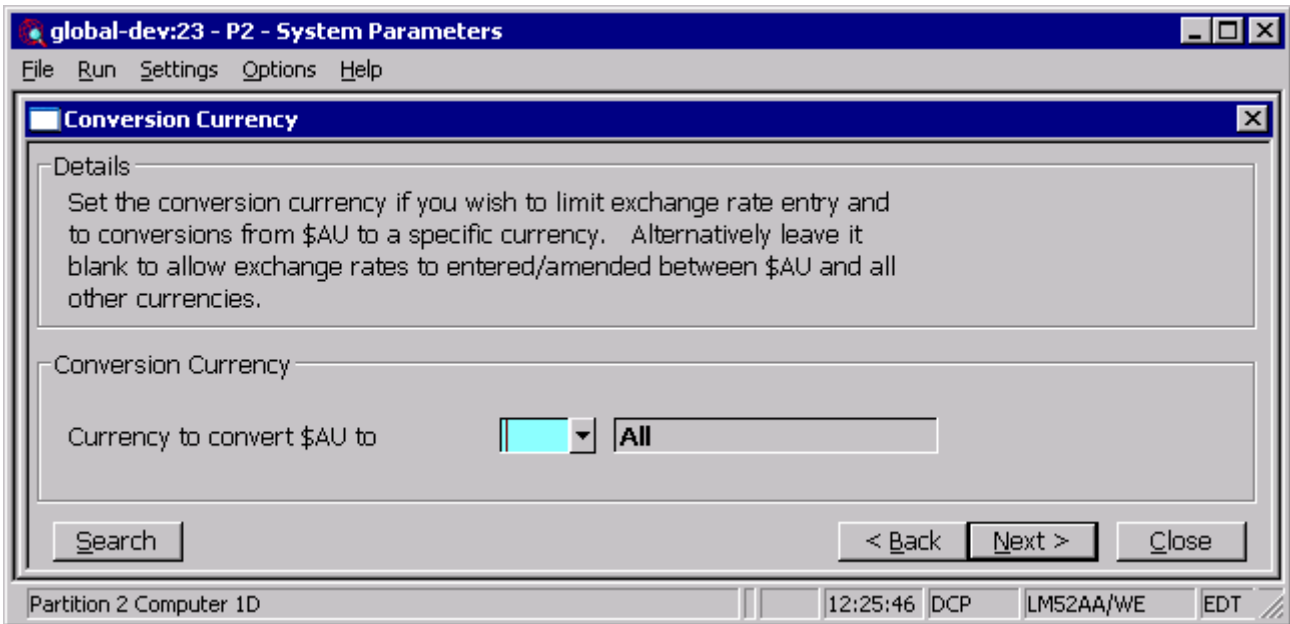
A new option labelled 'Maintain Exchange Rates' has been added to the General Ledger, Debtors Ledger, Creditors Ledger and Cash Manager menus (within the System Maintenance sub-menu). These options allow exchange rate maintenance to be accessed from outside of System Parameters. The new options are served by a single authorisation point (LM515).

A new window has been added (labelled 'Conversion Currency'). The new window appears in between selecting the exchange rate table and actually maintaining the rates. It contains a single prompt (labelled 'Currency to convert xxx to') and allows the exchange rate maintenance window to be limited to conversion rates between two specific currencies. The new prompt can be left blank to allow conversion rates to be maintained between the initially selected currency and all other currencies.

The maintain exchange rates window has been updated to include a visual representation of the exchange rate.

Author	DCP		
Project	ZM60_000326		
Version	1.0		2 of 4

Administration Parameters – Conversion Currency Window



This window appears after you select an exchange rate table when maintaining exchange rates. If only one exchange rate table has been configured this window appears when you press the ‘Maintain Rates’ button within the ‘Currency Parameters’ window.

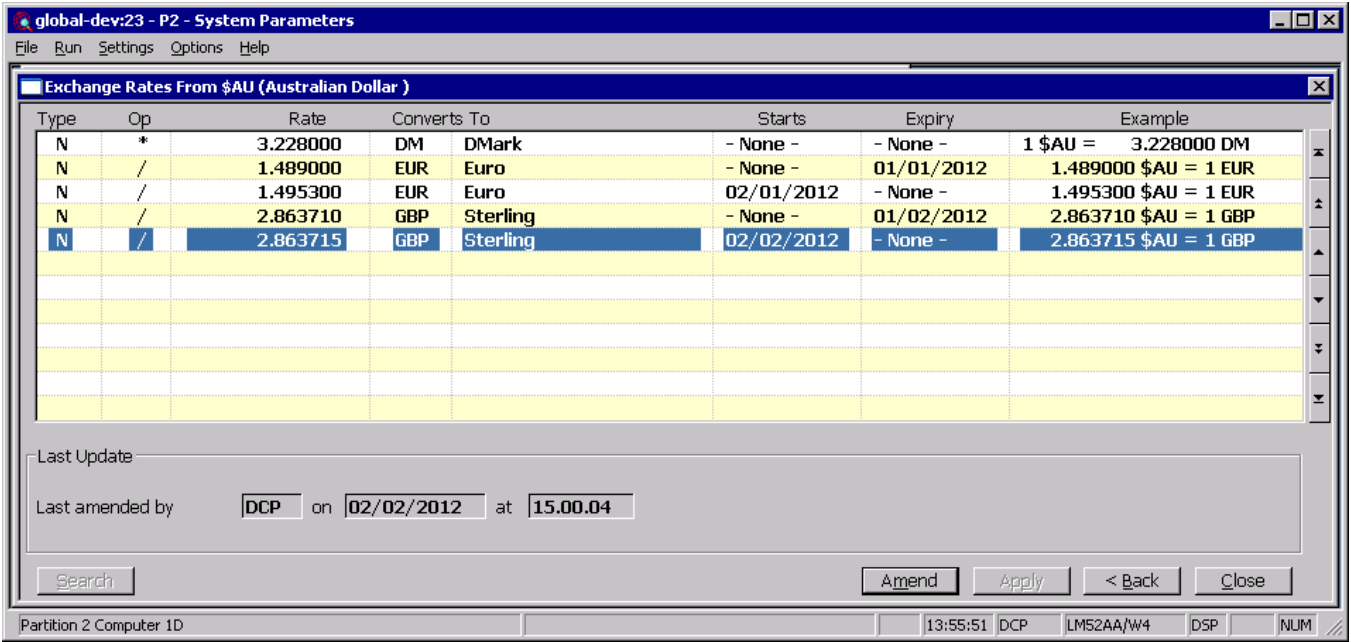
Purpose This window allows you to specify the currency to be used as the ‘convert to’ currency in the ‘Exchange Rates For Currency window.

The prompts are:

Currency to convert xxx to Set this if you wish to limit the exchange rate entry/maintenance to conversions from the originally selected currency to a specific currency. Alternatively leave this blank to allow exchange rates to be entered from the originally selected currency ‘to’ all currencies.

Author	DCP		
Project	ZM60_000326		
Version	1.0		3 of 4

Administration Parameters – Exchange Rates for Currency Window



Converts to *(Display only if a specific currency has been selected in the preceding window)*
 Enter the currency you are converting to; i.e. the 'to' currency. If the exchange rate type is 'S' (sub-currency), you can only enter a currency which is defined as a master currency. A search is available.

Example This is a visual representation of the conversion between the two currencies at the exchange rate.

Author	DCP		
Project	ZM60_000326		
Version	1.0		4 of 4