



Global 3000

Service Pack Note

Multiple Bin Handling

Author	DCP	
Project	ZM60_000344	
Version	1.0	1 of 37

INTRODUCTION

This service pack provides the ability to define and use multiple bins per stock location.

NOTE: Multiple Bin Handling is only available at sites configured to use the extension database.

The changes introduce the ability to record details of multiple 'bins' per stock location.

- Each bin can (depending on configuration options) hold multiple products.
- Each stocked product can (depending on configuration options) appear in either a single bin (per location) or in multiple bins.
- Each bin can be assigned to a user specified zone within its stock location. Zones identify the area of the stock location in which the bin is located. For example, they can be used to sub-divide a stock location in to aisles.
- Each bin can be assigned a priority level. The priority level can be used by the operator to determine the sequence in which bins should be used when manually issuing or receiving stock. It is also used by the system to control the sequence in which bins are selected when automatically issuing and receiving stock. SOP can optionally be configured to produce picking lists based on bin priorities.
- The quantity of each product within a bin is maintained whenever stock is issued received, adjusted or transferred. Changes are recorded and can be enquired upon in the same manner as stock movements.

The changes (assuming 'Multiple Bin Handling' is in use) are:

- The distribution options within system parameters have been updated to include a new option labelled 'Multiple Bin Handling'. This provides configuration options which control the use of multiple bins throughout the distribution modules. When multiple bin handling is initially configured the system will automatically prepare the data and optionally upgrade existing bin locations and bins entered for batches of batch tracked products.
- Stock transaction entry (issues, receipts, returns, adjustments and transfers) has been updated to take in to account bin numbers for all stocked products (not just those that are batch tracked).
- A new button labelled 'Zones' has been added to location maintenance. Zones are used to sub-divide stock locations. For example in to aisles. Zones can also be used to limit products included in stocktakes.
- A new option labelled 'Bin Maintenance' has been added to the system maintenance menu within Stock Control. This will allow bins to be created, updated and their contents to be manipulated.
- A new option labelled 'Bin Enquiries' has been added to the product enquiry menu. This allows enquiries upon bins, their contents and bin movements.
- A new option labelled 'Bin Reporting' has been added to the Reporting menu (within Stock Control). Note: This report can only be produced in PDF format; as such it requires an up-to-date copy of either PDF_In_The_Box or All_In_The_Box to be

Author	DCP	
Project	ZM60_000344	
Version	1.0	2 of 37

present on each GX client used to perform the report generation.

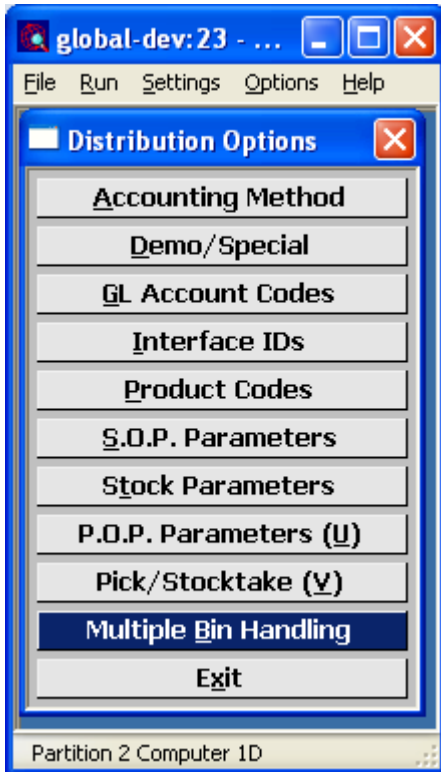
- Places that currently show a Bin Location (for example SOP picking list print) have been updated to remove the 'Bin location' column; the 'Bin Number' is shown/printed in its place.
- All places within Stock Control, SOP, POP and Manufacturer that issue, receive, adjust or transfer stock have been updated to update quantities recorded within bins where applicable.
- Warning, the BOM/WOP modules have not been updated to interface with multiple bin handling, it is therefore advised that care is taken to ensure that products that are held within bins (in systems configured for multiple bin handling) are NOT processed via BOM/WOP.

NOTE: The bin reporting function is currently being developed and is not available in the initial release of multiple bin handling. The documentation changes are only included to provide an overview of the intended functionality.

Author	DCP	
Project	ZM60_000344	
Version	1.0	3 of 37

DOCUMENTATION CHANGES

System Parameters – Distribution Options

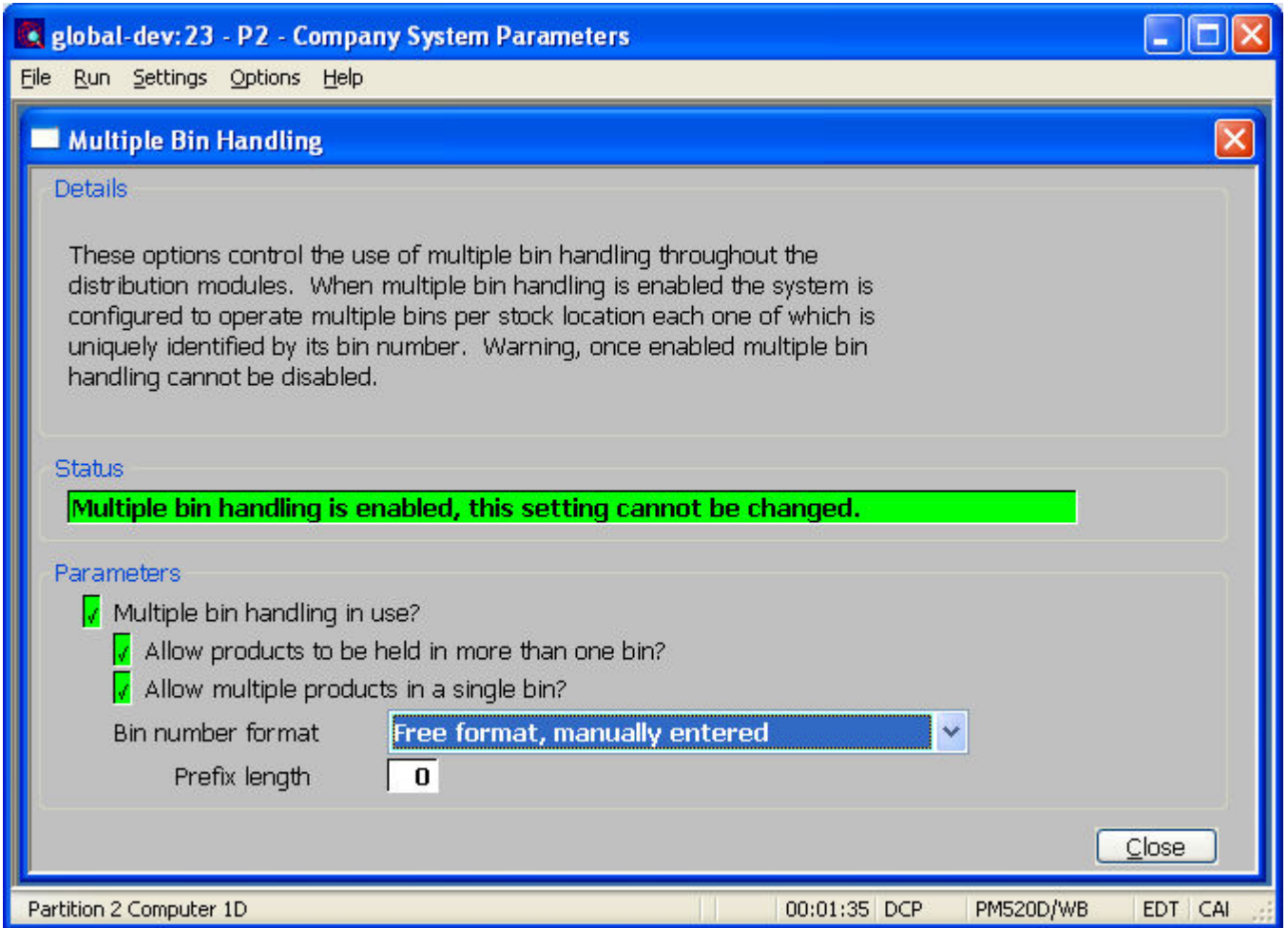


Multiple Bin Handling These settings control the use of multiple bin handling throughout the distribution modules.

Note This option is only available at sites configured to use the extension database.

Author	DCP	
Project	ZM60_000344	
Version	1.0	4 of 37

Multiple Bin Handling



This window appears when you select Multiple Bin Handling from the Distribution Options menu.

Purpose These options control the use of multiple bin handling throughout the distribution modules.

Note The options in this window are only available at sites configured to use the extension database.

Warning Once multiple bin handling is switched on, it cannot then be switched off.

The prompts are:

Multiple bin handling in use? When this is enabled the system is configured to operate multiple bins per stock location, each one identified by its unique bin number. Warning, once this is enabled it cannot be disabled.

Author	DCP	
Project	ZM60_000344	
Version	1.0	5 of 37

Note Multiple bin handling differentiates bins based on their unique number (within stock location) rather than by a bin location. Enabling multiple bin handling replaces and removes any existing 'bin locations' specified on products stock records.

If multiple bin handling is enabled in an established system you are given the option of allowing the system to automatically generate bins based on the bin locations and bin numbers already specified.

For batch tracked products any existing bin numbers are (always) automatically converted to new bin numbers (or transferred should the existing bin number be incompatible with the new bin numbering).

Allow products to be held in more than one bin.

When enabled each product can be held in multiple bins per stock location. When not enabled products are restricted to a single bin per location.

Allow multiple products in a single bin.

When enabled each bin can hold multiple products. When not enabled bins are restricted to a single product.

Bin number format.

This controls how bin numbers are formatted. The options are:

- **Free format, manually entered.** Bin numbers are always manually entered and can be made up of any characters.
- **Numerical, manually entered.** Bin numbers are manually entered, however they must be numerical.
- **Numerical, automatically generated.** Bin numbers are numerical and automatically generated by the system based on the 'Next bin number' for the associated stock location.
- **Fixed format.** Bin numbers consist of a prefix followed by a number. The prefix is manually entered and the number is automatically generated by the system based on the 'Prefix length' and the 'Next bin number' for the associated stock location.

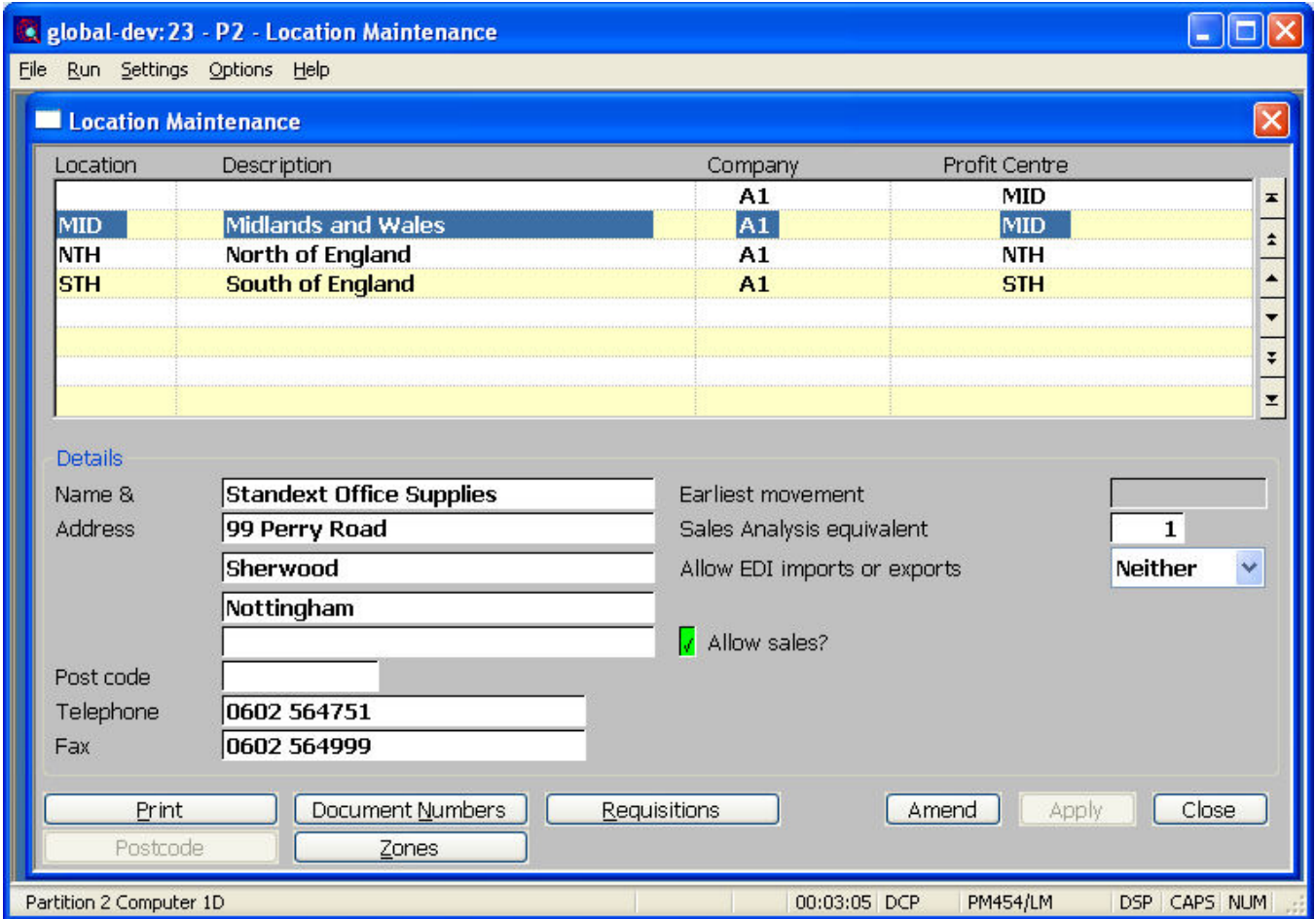
Note Free format (manually entered) bin numbers are left justified; all other bin numbers are right justified regardless of the setting of the bin number format.

Prefix length

(Only if the bin number format is set to 'Fixed format'). Enter the length of the prefix to be entered by the user (up to a maximum of 4 characters). The system uses this in-conjunction with the 'next bin number' for the associated stock location to automatically generate bin numbers when new bins are created.

Author	DCP		
Project	ZM60_000344		
Version	1.0		6 of 37

Location Maintenance Window



Zones (Only available in systems configured for multiple bin handling) Zones can be used to identify the area of the stock location in which stock bins are located.

Note Zones are used to sub-divide a stock location, for example in to aisles. Stocktakes can be limited to products held within bins situated at specific zones of a stock location.

Author	DCP		
Project	ZM60_000344		
Version	1.0		7 of 37

Prefixes/Document Numbers Window (Location Maintenance)

Prefixes/Document Numbers		
Details		
Stock prefix	STM	Next bin number 1
Sales order prefix	SOM	Next sales order number 1
Purchase order prefix	POM	Next purchase order number
Invoice prefix	INM	Next invoice number 1
Credit note prefix	CNM	Next credit note number 1
Requisition prefix	RQM	Next requisition number 1
Quotation prefix		Next quotation number

Next bin number *(Only available in systems configured for multiple bin handling. Display Only)*
 This is the next bin number to be used. It is only used in systems with bin number formats containing an automatically generated number.

Author	DCP	
Project	ZM60_000344	
Version	1.0	8 of 37

Zones



This window appears when you press the Zones button within Location Maintenance.

Purpose This window allows you to maintain existing zones and to record details of new zones.

Note Zones are used to sub-divide a stock location in to specific areas. They are utilized when multiple bin handling is in use. Stocktakes can be limited to products held within bins situated at specific zones of a stock location.

The prompts are:

Zone A zone is used to identify a specific area within a stock location. For example if a location is split in to aisles, a zone could be defined to uniquely identify each aisle.

Description The zone description/name.

The buttons are:

New This allows you to create a new zone at the selected location.

Amend This allows you to amend the description of the currently hi-lighted zone.

Apply *(Only available when amending an existing zone).* This completes and confirms your changes.

Delete This allows you to delete the currently hi-lighted zone (you must first ensure that there are no bins currently located at the zone).

Close This returns to the location maintenance window.

Author	DCP	
Project	ZM60_000344	
Version	1.0	9 of 37

Bin Details

Bin Number	Zone	Priority	No. Products	Status
BIN-028	NTH-ZONE-1	1	3	Active
BIN-029	NTH-ZONE-1	2	1	Empty
BIN-030	NTH-ZONE-1	1	0	Unused
BIN-050	NTH-ZONE-2	1	1	Full

Details

Description:

Colour:

Size:

Physical Location

Aisle: Rack number: Shelf number:

Buttons: Search, Amend, Apply, Close, Bin Contents, Generate Bins, Delete, New

Status bar: Partition 2 Computer 1D | 16:10:33 DCP | PM4

This window appears when you select Bin Maintenance from the System Maintenance menu within Stock Control. In multi-location systems you are prompted for the stock location.

Purpose This window allows you to maintain existing stock bins and to record details of new stock bins.

Note This option is only available at sites configured to use the extension database.

The prompts are:

Bin Number The bin number uniquely identifies the bin at the stock location.

Zone This can be used to identify the area of the stock location in which the bin is located. It can be left blank if not required. Zones are defined within Location Maintenance. A search is available.

Note Zones are used to sub-divide a stock location, for example in to aisles.

Author	DCP		
Project	ZM60_000344		
Version	1.0		10 of 37

Priority Enter a priority level (1 – 99 with 1 being the highest priority). The priority level can be used by the operator to determine the sequence in which bins should be used when manually issuing or receiving stock. It is also used by the system to control the sequence in which bins are selected when automatically issuing and receiving stock. SOP picking lists can optionally be produced based on the priority level assigned to bins (see the SOP Picking Parameters).

Note The priority is automatically set to 1 and skipped if products cannot appear in multiple bins. For batched tracked stock that has expiry dates it is advisable to ensure that stock approaching its expiry date is transferred to the highest priority bin.

No. Products (*Display only*) This shows the number of products currently held in the bin.

Status (*Display only*) This gives an indication of the bins current status.

- New (the bin is being created).
- Unused (the bin has been created but no contents have been defined).
- Empty (the bin contains products but they are all at zero qty).
- Full (all products in the bin are currently at their maximum qty).
- Active (the bin contains some stock items but is not currently full).

If any products in the bin have not got a maximum quantity defined, the bin status will only show as either active or empty.

Note The remaining prompts are all optional and can be used to define the characteristics of the bin.

Description A 30 character description of the bin.

Colour The main colour of the bin. The options are:

- Not specified
- Black
- White
- Red
- Green
- Blue
- Yellow
- Orange
- Brown
- Grey
- Pink

Author	DCP	
Project	ZM60_000344	
Version	1.0	11 of 37

Size The size of the bin. The options are:

- Not specified
- Size 1 – 10
- Extra Small
- Small
- Medium
- Large
- Extra Large
- Cage
- Crate

Aisle This can be used to further identify the bins physical location within the stock location (primarily intended for use where the ‘zone’ does not refer to an aisle).

Rack number A number (0 – 9999) to further identify the bins physical location within the stock location.

Shelf number A number (0 – 9999) to further identify the bins physical location within the stock location.

Note If the aisle, rack number or shelf number are amended then it is in effect a bin transfer as the physical location of the bin (and any stock within it) is changing. The system issues a warning to this effect.

The buttons are:

Bin Contents This allows you to specify and amend details of the products that are stored in the currently hi-lighted bin.

Generate Bins This allows you to automatically create multiple new bins.

New This allows you to manually create a single new bin.

Amend This allows you to amend the details of the currently hi-lighted bin.

Apply (*Only available when amending an existing bin*). This completes and confirms your changes.

Delete This allows you to delete the currently hi-lighted bin (as long as it is empty).

Close This returns to the stock location selection window. If the system is not configured for multiple stock locations you are returned to the housekeeping menu.

Author	DCP	
Project	ZM60_000344	
Version	1.0	12 of 37

Generate New Bins

This window appears when you press the ‘Generate Bins’ button within the Bin Details window.

Purpose This window allows you to generate multiple new bins. The bins are created with consecutive bin numbers.

The prompts are:

Prefix *(Only if the bin number format is set to ‘Fixed format’)*. Enter the prefix to be used for all bins created.

Starting bin number Enter the number with which the generated bins should begin (if bin numbers are automatically generated this is set to the next bin number for the location and skipped). Subsequent bins are created with ascending consecutive numbers; any duplicate bin numbers are skipped.

Number of bins to be generated Enter the number of bins you wish to create.

Author	DCP	
Project	ZM60_000344	
Version	1.0	13 of 37

Example If the starting bin number is 1280001230 and the number of bins to generate is 5, the following bins are created.

1280001230, 1280001231, 1280001232, 1280001233 and 1280001234.

If bin number 1280001232 already exists the bin numbers created would be:

1280001230, 1280001231, 1280001233, 1280001234 and 1280001235.

Zone Enter the zone at which the bins are to be located, this can be left blank if not required. A search is available.

Priority Enter the priority level (1 – 99 with 1 being the highest priority) to be used for each bin created. The priority level can be used by the operator to determine the sequence in which bins should be used when manually issuing or receiving stock. It is also used by the system to control the sequence in which bins are selected when automatically issuing and receiving stock. SOP picking lists can optionally be produced based on the priority level assigned to bins (see the SOP Picking Parameters).

Note The priority is automatically set to 1 and skipped if products cannot appear in multiple bins.

Description An optional 30 character description to be used for each bin created.

Colour The main colour of each bin to be created. The options are:

- Not specified
- Black
- White
- Red
- Green
- Blue
- Yellow
- Orange
- Brown
- Grey
- Pink

Size The size of each bin to be created. The options are:

- Not specified
- Size 1 – 10
- Extra Small
- Small
- Medium
- Large
- Extra Large

Aisle This can be used to further identify the bins physical location within the stock

Author	DCP		
Project	ZM60_000344		
Version	1.0		14 of 37

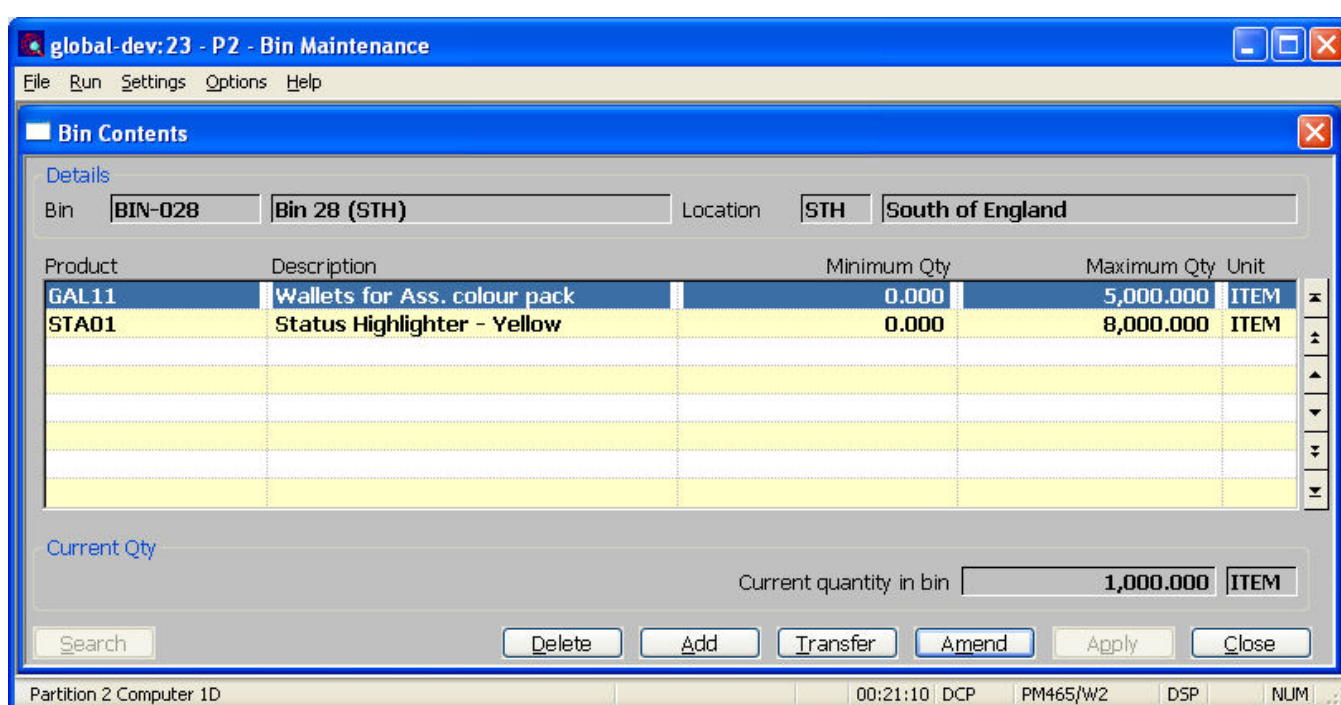
location (primarily intended for use where the 'zone' does not refer to an aisle).

- Rack number** A number (0 – 9999) to further identify the bins physical location within the stock location.
- Shelf number** A number (0 – 9999) to further identify the bins physical location within the stock location.

The buttons are:

- Proceed** Automatically creates the bins as required.
- Cancel** Returns to the bin details window without creating any new bins.

Bin Contents



This window appears when you press the 'Bin Contents' button within the Bin Details window.

- Purpose** This window allows you to maintain the content details for the selected bin.

The prompts are:

- Product** The product. A search is available.
- Description** *(Display only)* The product description.
- Minimum Quantity** The minimum quantity of the product (in stock units) that should be in the bin at all times.
- Maximum Quantity** The maximum quantity of the product (in stock units) that the bin should hold.
- Current Quantity** *(Display Only)* The current quantity of the product (in stock units) in the bin.
- Unit** *(Display only)* The unit in which the product is stocked.

Author	DCP		
Project	ZM60_000344		
Version	1.0		15 of 37

The buttons are:

- Search** Initiates the standard product search.
- Transfer** This allows you to transfer the product or a quantity of the product to another bin. Bin movement records are generated to account for the transfer.
- Note** A product can only be transferred to another bin at the same stock location.
- Add** This allows you to add a new product to the bin.
- Amend** This allows you to amend the details for the currently hi-lighted product.
- Apply** *(Only available when amending existing contents).* This completes and confirms your changes.
- Delete** This allows you to remove the currently hi-lighted product from the bin.
- Close** This returns to the bin details window.

Bin Transfer

The screenshot shows a 'Bin Transfer' dialog box with the following details:

- Product:** GAL11 (Wallets for Ass. colour pack)
- Location:** STH (South of England)
- Transfer From:**
 - Sending bin: BIN-028
 - Minimum quantity: 0.000
 - Maximum quantity: 5,000.000
 - Current quantity: 1,000.000
 - Picked quantity: 0.000
- Transfer To:**
 - Receiving bin: (empty dropdown)
 - Minimum quantity: 0.000
 - Maximum quantity: 0.000
 - Current quantity: 0.000
- Transfer Details:**
 - Action: Move Product
 - Quantity to transfer: 1000.000

Buttons: Search, Proceed, Cancel

This window appears when you press the 'Transfer' button within the Bin Contents window.

Author	DCP	
Project	ZM60_000344	
Version	1.0	16 of 37

Purpose This window allows you to transfer the product or the quantity of the product to another bin. Bin movement records are generated to account for the transfer.

The prompts are:

Product *(Display only)* The product being transferred.

Description *(Display only)* The product description.

Sending bin *(Display only)* The currently selected bin, i.e. the bin from which the product/quantity is to be transferred.

Current quantity *(Display only)* The current quantity of the product (in stock units) in the sending bin.

Minimum quantity *(Display only)* The minimum quantity of the product (in stock units) at the sending bin.

Maximum quantity *(Display only)* The maximum quantity of the product (in stock units) at the sending bin.

Receiving bin The bin number to which the product or quantity is to be transferred. A search is available.

Note A product can only be transferred to another bin at the same stock location.

Current quantity *(Display only)* The current quantity of the product (in stock units) in the target bin.

Minimum quantity *(Display only)* The minimum quantity of the product (in stock units) at the target bin.

Maximum quantity *(Display only)* The maximum quantity of the product (in stock units) at the target bin.

Action The options are:

- **Move product**, this moves the product and current quantity to the target bin and removes it from the contents list at the sending bin. The product is added to the contents list of the target bin if required.
- **Transfer quantity**, this moves a specified quantity to the target bin. The product remains in the contents list at the sending bin and is added to the contents list of the target bin if required.

Note You can only transfer a quantity in systems configured to allow products to be held in multiple bins. Picked quantities cannot be transferred.

Quantity to transfer Enter the quantity to transfer to the target bin. If the action is 'Move product' then this is set to the current quantity at the sending bin and skipped. A warning is issued if the transfer will result in the current quantity at the sending bin falling below its minimum or the current quantity at the target bin exceeding its maximum quantity.

The buttons are:

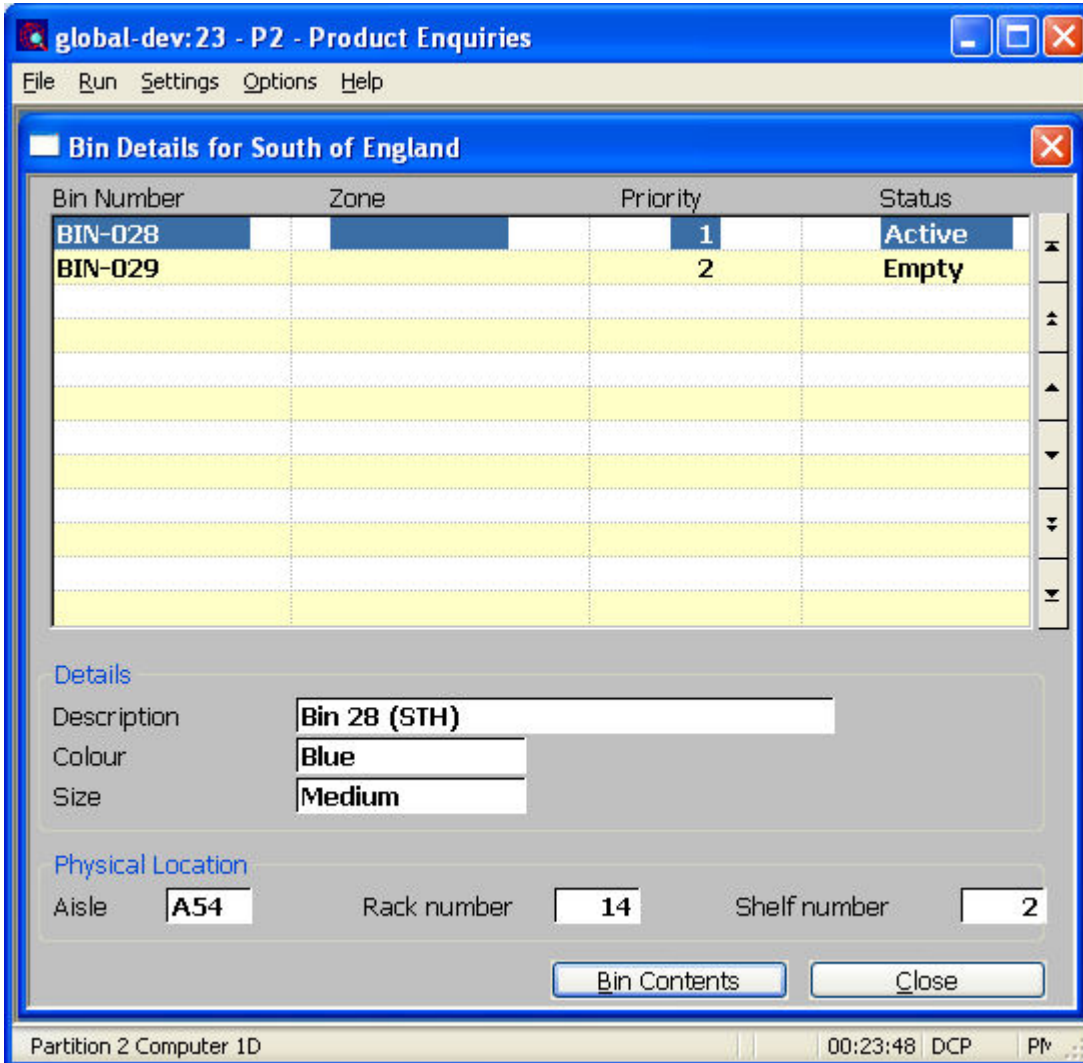
Search Initiates the standard bin search.

Proceed Transfers the product/quantity based on your selections. Bin movement records are generated to account for the transfer.

Cancel Returns to the bin contents window without processing the transfer.

Author	DCP	
Project	ZM60_000344	
Version	1.0	17 of 37

Bin Enquiry



This window appears when you initiate a stock bin enquiry. In multi-location systems you are first prompted for the stock location.

Purpose This window provides an enquiry for existing stock bins.

Note: This option is only available at sites configured to use the extension database.

The items shown are:

Bin Number The bin number which uniquely identifies the bin at the stock location.

Zone This identifies the area of the stock location in which the bin is located.

Author	DCP		
Project	ZM60_000344		
Version	1.0		18 of 37

Status This gives an indication of the bins current status.

- New (the bin has been created but no contents have been defined).
- Empty
- Full (all products in the bin are currently at their maximum qty).
- Active (the bin contains some stock items but is not currently full).

If any products in the bin have not got a maximum quantity defined the bin status will never show as status Full.

Priority The bins priority level (1 – 99 with 1 being the highest priority).

Description A 30 character description of the bin

Colour The main colour of the bin.

Size The size of the bin.

Aisle This is used to further identify the bins physical location within the stock location (primarily intended for use where the ‘zone’ does not refer to an aisle).

Rack number This is used to further identify the bins physical location within the stock location.

Shelf number This is used to further identify the bins physical location within the stock location.

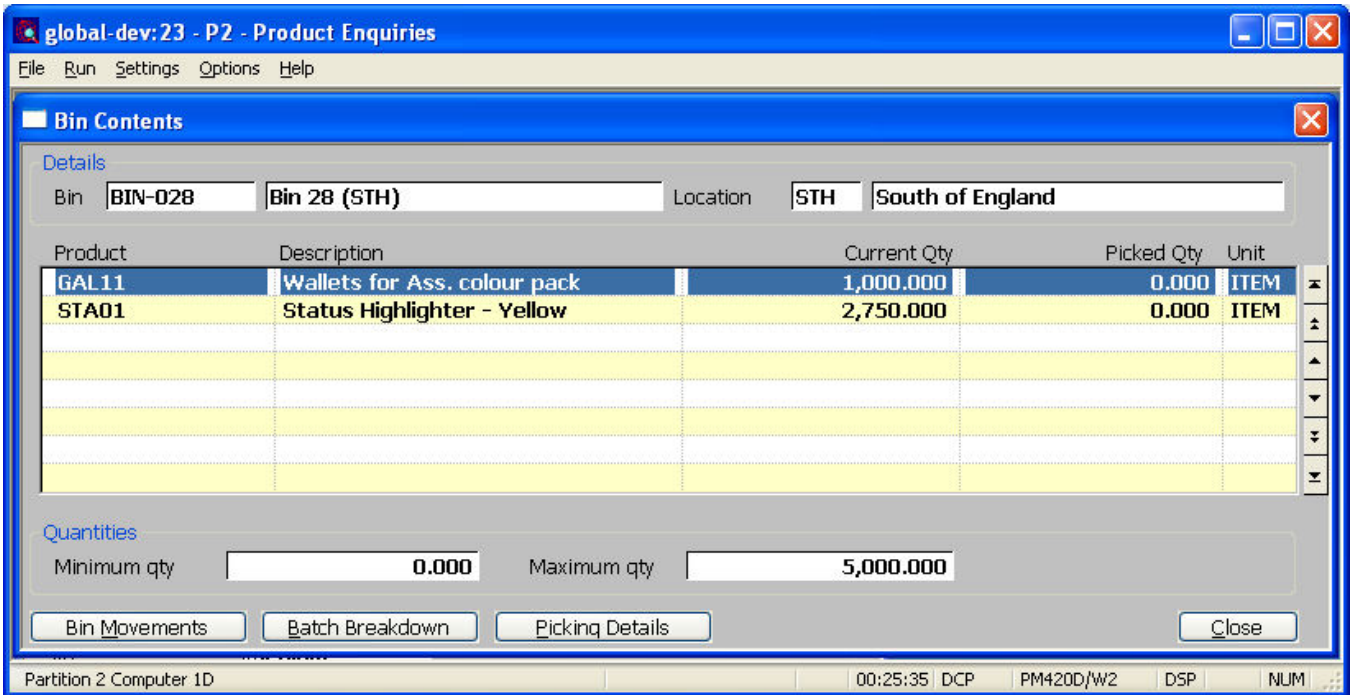
The buttons are:

Bin Contents This allows you to enquire upon the list of products that are stored in the currently hi-lighted bin.

Close This exits the bin enquiry.

Author	DCP		
Project	ZM60_000344		
Version	1.0		19 of 37

Bin Contents Enquiry



This window appears when you press the 'Bin Contents' button within the Bin Enquiry window.

Purpose This window allows you to view the content details for the selected bin.

The items shown are:

Product The product.

Description The product description.

Current Quantity The current quantity of the product (in stock units) in the bin.

Picked Quantity *(Only available at sites configured to pick by bin priority or to produce part 2 of the picking list in bin sequence)* The quantity (in stock units) in the bin that has been marked as picked during the SOP or Manufacturer picking process.

Unit The unit in which the product is stocked.

Last movement date The date stock for the product last moved in to or out of the bin.

Minimum quantity The minimum quantity of the product (in stock units) that should be in the bin at all times.

Maximum quantity The maximum quantity of the product (in stock units) that the bin should hold.

The buttons are:

Bin Movements This allows you to enquire upon the movements for the product in and out of the bin.

Batch Breakdown *(Only available for batch tracked products or in systems configured for FIFO costing)* This allows you to enquire upon the batches that make up the quantity in the bin.

Author	DCP		
Project	ZM60_000344		
Version	1.0		20 of 37

Picking Details (Only available at sites configured to pick by bin priority or to produce part 2 of the picking list in bin sequence) This allows you to enquire upon quantities picked and issued from the bin.

Close This returns to the bin enquiry window.

Batch Breakdown Enquiry

Batch/Bin Breakdown Details

Details

Location:

Product:

Bin Number:

Receipt	Status	Reference	Current Qty (Bin)	Unit
4	Active	4	1,000.000	ITEM

Batch Details

Description:

Quantity left:

Expiry date:

Bin Details

Last movement:

Picked qty:

Partition 2 Computer 1D | 00:29:12 DCP | PM420D/W

This window appears when you press the 'Batch Breakdown' button within the Bin Contents enquiry window.

Purpose This window allows you to view the batches or receipts that make up the current quantity of the product in the selected bin.

The items shown are:

Batch/Receipt The batch/receipt number.

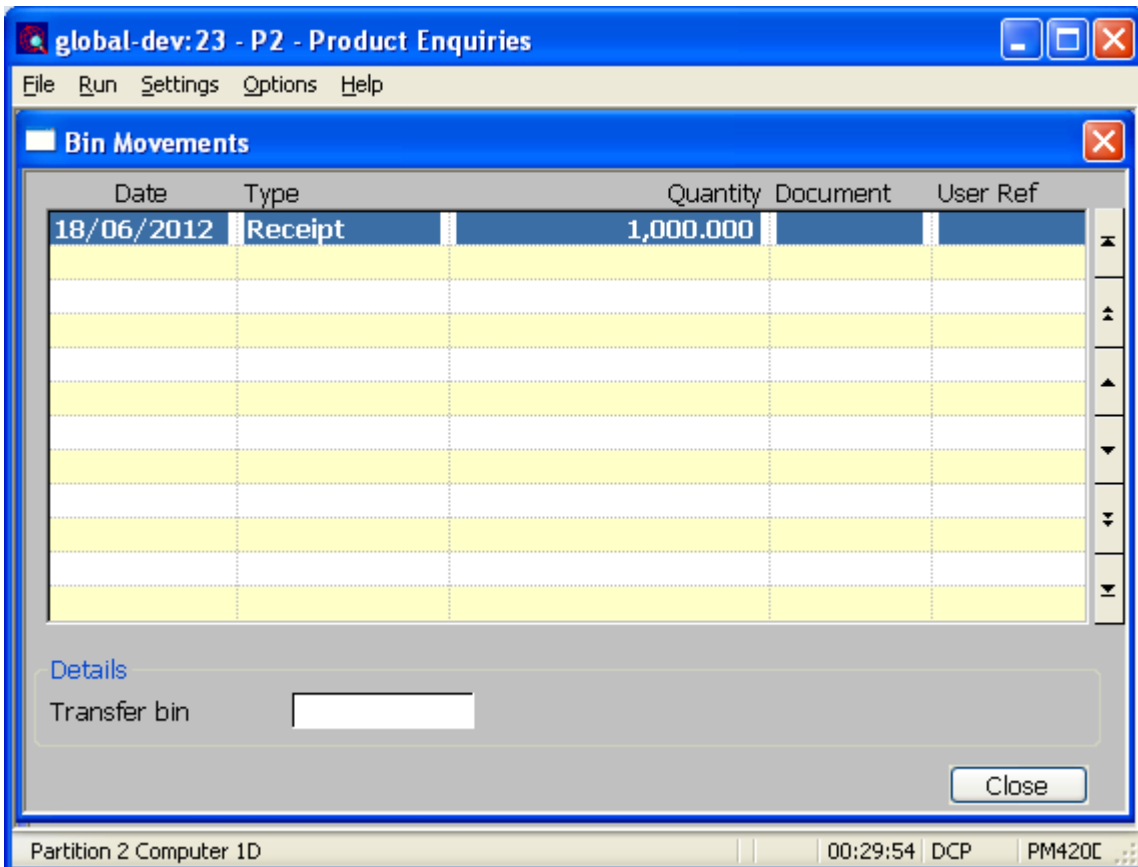
Author	DCP		
Project	ZM60_000344		
Version	1.0		21 of 37

Status	The batch status.
Reference	The batch/receipt reference.
Description	The batch description.
Current Quantity	The current quantity of stock from the batch/receipt (in stock units) in the bin.
Picked Quantity	<i>(Only available at sites configured to pick by bin priority or to produce part 2 of the picking list in bin sequence)</i> The quantity (from the batch/receipt) in the bin that has been marked as picked during the SOP or Manufacturer picking process.
Unit	The unit in which the product is stocked.
Expiry date	The batch expiry date (if relevant).
Last movement date	The date stock from the batch last moved in to or out of the bin.

The buttons are:

Bin Movements	This allows you to enquire upon the movements for the product in and out of the bin.
Picking Details	<i>(Only available at sites configured to pick by bin priority or to produce part 2 of the picking list in bin sequence)</i> This allows you to enquire upon quantities picked and issued from the bin.
Close	This returns to the bin contents enquiry window.

Bin Movements Enquiry



Author	DCP		
Project	ZM60_000344		
Version	1.0		22 of 37

This window appears when you press the 'Bin Movements' button within the Bin Contents or Batch Breakdown windows.

Purpose This window allows you to view the movements of the product both in to and out of the bin.

The items shown are:

Date The date of the movement.

Type The movement type:

- Receipt.
- Issue.
- Credit.
- Invoice.
- Write Off.
- Write Back (a write off/adjustment returning stock).
- Transfer (to or from another bin).

Quantity The quantity of the product (in stock units) moved in to or out of the bin.

Document The document (stock transaction, SOP order, POP order etc) giving rise to the movement

User Ref The user reference relating to the stock movement.

The buttons are:

Close This returns to the previous window.

Author	DCP	
Project	ZM60_000344	
Version	1.0	23 of 37

Bin Picking Details Enquiry

Date	Pick Run	Type	Quantity	Document
08/08/2012	23	Pick	12.000	ORD00088
08/08/2012	23	Pick	15.000	ORD00089
08/08/2012	23	Issue	-27.000	ORD00088
08/08/2012	23	Pick	1,000.000	ORD00088
08/08/2012	23	Issue	-1,000.000	ORD00088
08/08/2012	24	Pick	12.000	ORD00088
08/08/2012	24	Issue	-12.000	ORD00088
08/08/2012	24	Pick	1,000.000	ORD00088
08/08/2012	24	Issue	-1,000.000	ORD00088
08/08/2012	25	Pick	12.000	ORD00088
08/08/2012	25	Issue	-12.000	ORD00088
08/08/2012	25	Pick	12.000	ORD00088

This window appears when you press the 'Picking Details' button within the Bin Contents or Batch Breakdown windows.

Purpose This window allows you to view the quantities picked and issued from the bin.

The items shown are:

- Date** The date the quantity was picked or issued.
- Pick Run** The pick run number.
- Type** This indicates whether the quantity was picked or issued.
- Quantity** The quantity of the product (in stock units) picked or issued.
- Document** The document (SOP order etc).

The buttons are:

- Close** This returns to the previous window.

Author	DCP		
Project	ZM60_000344		
Version	1.0	24 of 37	

Bin Reporting

NOTE: The bin reporting function is currently being developed and is not included in the initial release of multiple bin handling. The following documentation changes are only included to provide an overview of the intended functionality.

This window appears when you select ‘Bin Reporting’ from the ‘Stock Control Reporting’ menu.

Purpose This report (which is only available in PDF format – please see the below note) prints bin details and bin movements.

Note PDF format reports require an up to date copy of either PDF_In_The_Box or All_In_The_Box to be present on each GX client used to perform the report generation.

The prompts are:

Location *(Only available for multi-location systems)* This can be used to limit the report to bins that reside at a specific stock location. It can be left blank to include bins for all stock locations. A search is available.

Zone from...to *(Not available when producing reports for all locations)* Set these to limit the bins included based on the zone to which they belong. These can be left blank to include products belonging to either from the ‘first’ or to the ‘last’ zone defined. A search is required.

Bin from...to Set these to limit the bins included to a specific range. These can be left blank to include bins either from the ‘first’ or to the ‘last’ bin defined. A search is available.

Product from...to Set these to limit the bins included based on the products they contain. These can be left blank to include bins containing products either from the ‘first’ or to the ‘last’ product on file. A search is available.

Include full bin details? Set this to include the full bin details in the report. If full bin details are not included the bin details are printed on a single line consisting of the bin number, zone and priority level. By default they are excluded.

Include bin contents list? Set this to include a list of the bin contents as each bin is added to the report.

Include bin movements? Set this to include a list of bin movements (based on the following selections) as each bin is added to the report.

Include issues? *(Only if bin movements are included in the report)* Set this to include bin movements that are type ‘Issue’ on the report.

Include receipts? *(Only if bin movements are included in the report)* Set this to include bin movements that are type ‘Receipt’ on the report.

Include write-offs? *(Only if bin movements are included in the report)* Set this to include bin movements that are type ‘Write-off’ on the report.

Include bin movements dated from...to *(Only if bin movements are included in the report)* Set these to limit the bin movements included based on their date. These can be left blank to include bin movements either from the ‘first’ or to the ‘last’ bin movement on file.

Author	DCP	
Project	ZM60_000344	
Version	1.0	25 of 37

The buttons are:

Next> Select this to produce the report based on the selected criteria.

Note The report is produced in bin number within zone (within location) sequence.

Cancel Select this to return to the Stock Control Reporting menu.

Issue Items from Bin

Issue Items from Bin

Issue Details

Product: STA11 Quantity to issue: 125.000 ITEM
 Location: STH Quantity done: 0.000 ITEM
 Quantity left: 125.000 ITEM

Priority	Bin	Batch	Picked Qty	Current Qty	Unit
1	BIN-028	1	0.000	750.000	ITEM
2	BIN-029	1	0.000	250.000	ITEM

Bin Details

Colour: Blue Bin qty: 750.000
 Size: Medium Minimum qty: 0.000
 Description: Bin 28 (STH) Maximum qty: 1,000.000

Physical Location

Aisle: A54 Rack number: 14 Shelf number: 2 Zone:

Buttons: Automatic Issue, Manual Issue, Cancel

This window appears when you issue stock (including write-offs) for a product with stock held in more than one bin.

Purpose This window lists all bins which contain stock for the product. It allows you to select the bins and then quantities to be issued as required.

Note You cannot leave this window until the quantity to be issued from stock has also been fully issued from bins.

The items shown in the upper part of the window are:

Product The product (and its description) being issued.

Quantity entered The overall quantity to be issued from bins.

Author	DCP		
Project	ZM60_000344		
Version	1.0		26 of 37

Issued The quantity issued from bins so far.

Left The quantity remaining to be issued

The items shown in the lower part of the window are:

Priority The priority level for the bin.

Bin The bin number

Zone The zone (within the location) in which the bin is located.

Current Quantity The quantity of the product currently in the bin

Picked quantity *(Only available at sites configured to pick by bin priority or to produce part 2 of the picking list in bin sequence)* The quantity within the bin currently marked as picked for sales orders or works orders.

Minimum quantity The minimum quantity of the product that should be in the bin at all times.

Available Quantity The quantity available to issue (current quantity minus picked quantity minus minimum quantity).

Description A 30 character description of the bin

Colour The main colour of the bin.

Size The size of the bin.

Aisle This can be used to further identify the bins physical location within the stock location (primarily intended for use where the 'zone' does not refer to an aisle).

Rack number This is used to further identify the bins physical location within the stock location.

Shelf number This is used to further identify the bins physical location within the stock location.

Maximum quantity The maximum quantity of the product that the bin should hold.

The buttons are:

Automatic Issue This will automatically distribute the quantity remaining to be issued across the available bins. This process uses the bin priority levels when selecting the bins to be issued from. On completion a list of the quantities issued and the bins used is displayed.

Note Where possible, the automatic issue process takes each bin's picked and minimum quantities in to account, it will attempt to avoid issuing picked stock or taking a bin below its minimum quantity.

For example:

Bin A01 – Priority = 2, Current qty = 100, Picked qty = 0, Minimum qty = 50

Bin A02 - Priority = 1, Current qty = 60, Picked qty = 5, Minimum qty = 30.

If a qty of 50 is issued, a qty of 25 will be taken from bin A02 (leaving the minimum qty of 30 and the picked qty of 5) and 25 will be taken from bin A01.

If a qty of 115 is issued, a qty of 55 will be taken from bin A02 (preserving the picked qty of 5) and 60 will be taken from bin A01.

Manual Issue This prompts the user for the quantity to be issued from the currently hi-lighted bin.

Author	DCP		
Project	ZM60_000344		
Version	1.0		27 of 37

Note When manually issuing stock the user is not prevented from issuing picked stock or taking a bin below its minimum quantity, however the system will show a warning when they do so.

Receive Items in to Bin

This window appears when you receive stock (including write-backs) for a product which can be held in more than one bin.

Purpose This window lists all bins in which the product can be placed. It allows you to select the bins and then quantities to be received as required.

Note You cannot leave this window until the quantity being received in to stock has also been fully placed in to bins.

The items shown in the upper part of the window are:

Product The product (and its description) being received.

Quantity entered The overall quantity to be received in to bins.

Received The quantity received in to bins so far.

Author	DCP
Project	ZM60_000344
Version	1.0
	28 of 37

Left The quantity remaining to be received

The items shown in the lower part of the window are:

Priority The priority level for the bin.

Bin The bin number

Zone The zone (within the location) in which the bin is located.

Current Quantity The quantity of the product currently in the bin

Maximum quantity The maximum quantity of the product that that the bin should hold..

Unfilled Quantity The quantity that can be placed in the bin without exceeding its maximum quantity (maximum quantity minus current quantity).

Description A 30 character description of the bin

Colour The main colour of the bin.

Size The size of the bin.

Rack number This is used to further identify the bins physical location within the stock location.

Shelf number This is used to further identify the bins physical location within the stock location.

Minimum quantity The minimum quantity of the product that should be in the bin at all times.

The buttons are:

Automatic Receipt This will automatically distribute the quantity remaining to be received across the available bins. This process uses the bin priority levels when selecting the bins to be received in to. On completion a list of the quantities received and the bins in which they have been placed is displayed.

Note Where possible, the automatic receipt process takes each bin's maximum quantities in to account and will attempt to avoid over filling.

For example:

Bin A01 – Priority = 2, Current qty = 100, Maximum qty = 150

Bin A02 - Priority = 1, Current qty = 60, Maximum qty = 80.

If a qty of 50 is received, 20 will be placed in bin A02 and 30 will be placed in bin A01.

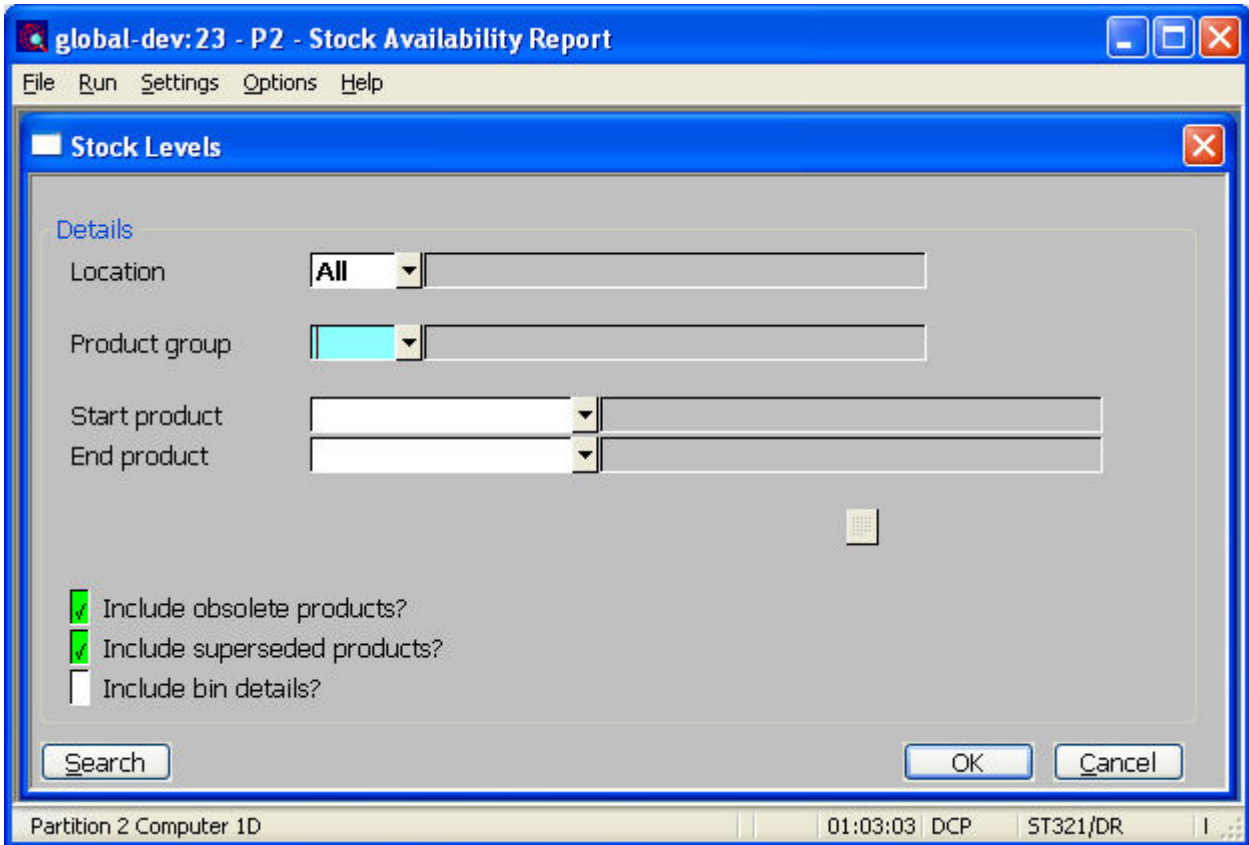
Manual Receipt This prompts the user for the quantity to be placed in the currently hi-lighted bin.

Note When manually receiving stock the user is not prevented from taking a bin above its maximum quantity, however the system will show a warning when they do so.

Add To New Bin *(Only available in systems configured to allow products to be held in multiple bins)* This prompts the user to select a new bin in which the product can be placed.

Author	DCP		
Project	ZM60_000344		
Version	1.0		29 of 37

Stock Levels Report



Include Bin details *(Only available in systems configured for multiple bin handling)* Set this to include the stock bin details on separate lines.

Author	DCP	
Project	ZM60_000344	
Version	1.0	30 of 37

Available Stock Report

global-dev: 23 - P2 - Stock Availability Report

File Run Settings Options Help

Stock Levels

Details

Location: All

Product group: [Cyan Highlight]

Start product: [Dropdown]

End product: [Dropdown]

Include obsolete products?

Include superseded products?

Include bin details?

Search OK Cancel

Partition 2 Computer 1D 01:03:03 DCP ST321/DR

Include Bin details *(Only available in systems configured for multiple bin handling)* Set this to include the stock bin details on separate lines.

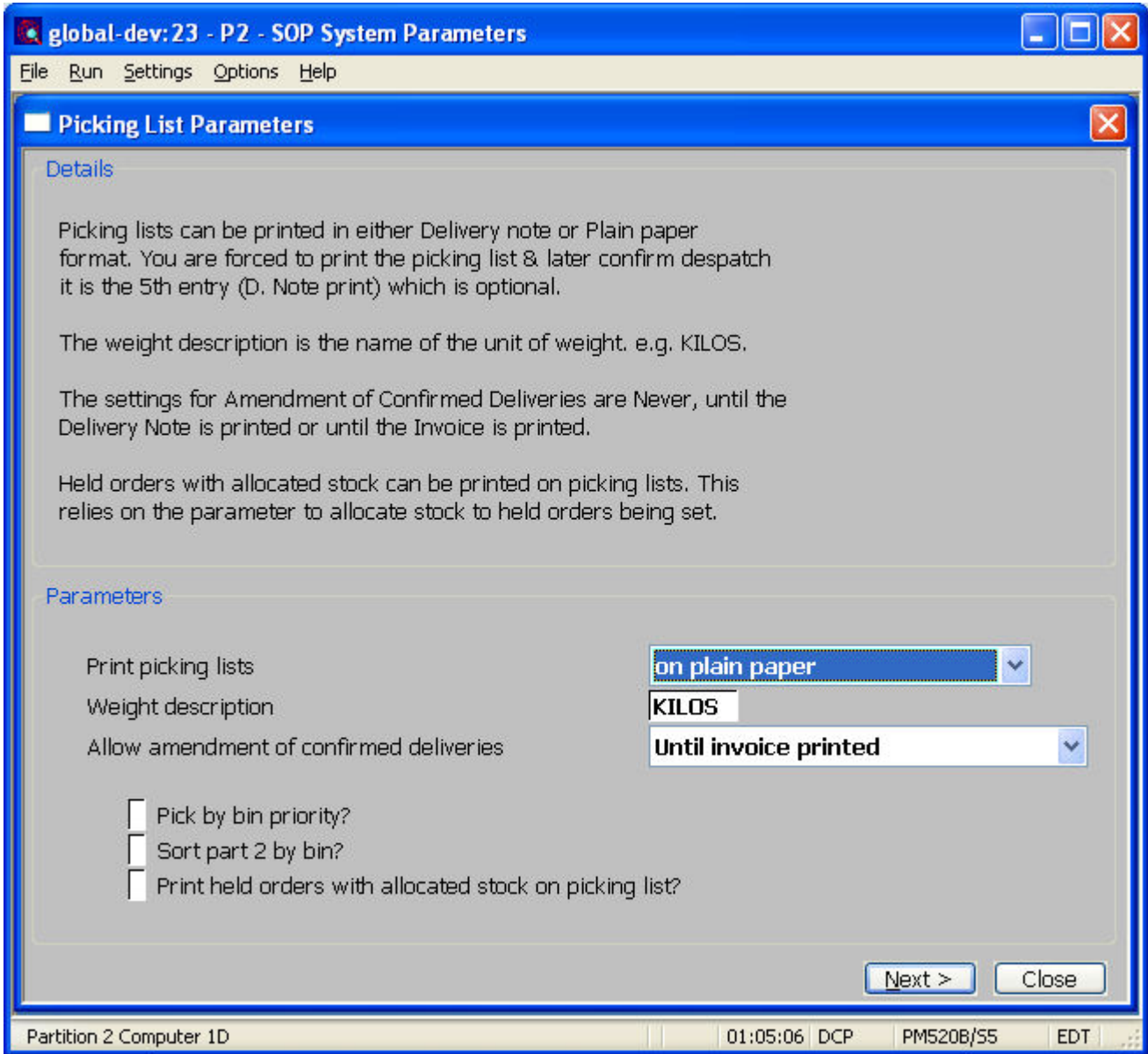
Author	DCP	
Project	ZM60_000344	
Version	1.0	31 of 37

Selected Stock Movements Report

Include Bin number *(Only available in systems configured for multiple bin handling)* Set this to include the stock bin number to which the movement relates. When selected the bin number is included in place of the movement creation date.

Author	DCP	
Project	ZM60_000344	
Version	1.0	32 of 37

SOP Picking List Parameters Window



Pick by bin priority *(Only available in systems configured for multiple bin handling)* Set this to configure the system to pick stock from bins based on their priority levels.

Note If the above option is configured in a FIFO costing system it is possible that in some cases younger stock will be issued before older stock (which is contrary to the concept of FIFO costing).

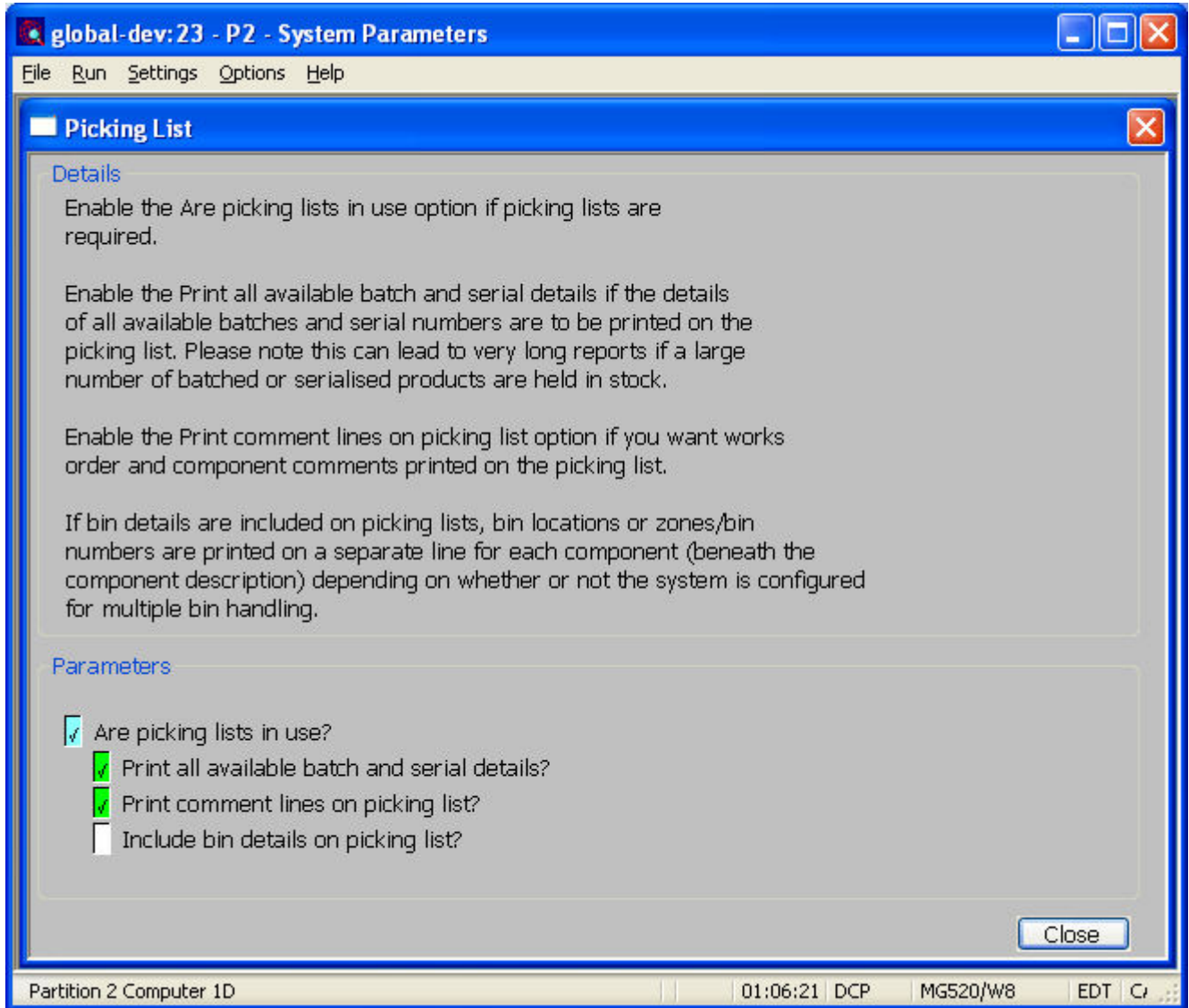
Sort part 2 by bin When set part 2 of the picking list is produced in bin sequence as follows:

- If multiple bin handling is in use, part 2 is sequenced by bin number within zone. This is automatically set and skipped if the system is configured to pick by bin priority.
- If multiple bin handling is not in use, part 2 is sequenced by bin location. Batch tracked products are additionally sorted by bin number within bin location in systems configured to print batch references on picking lists.

Author	DCP		
Project	ZM60_000344		
Version	1.0		33 of 37

Note If the system is configured to use multiple bin handling the zone and bin number are printed on the picking list instead of the bin location and bin number.

Manufacturer Picking List Parameters Window



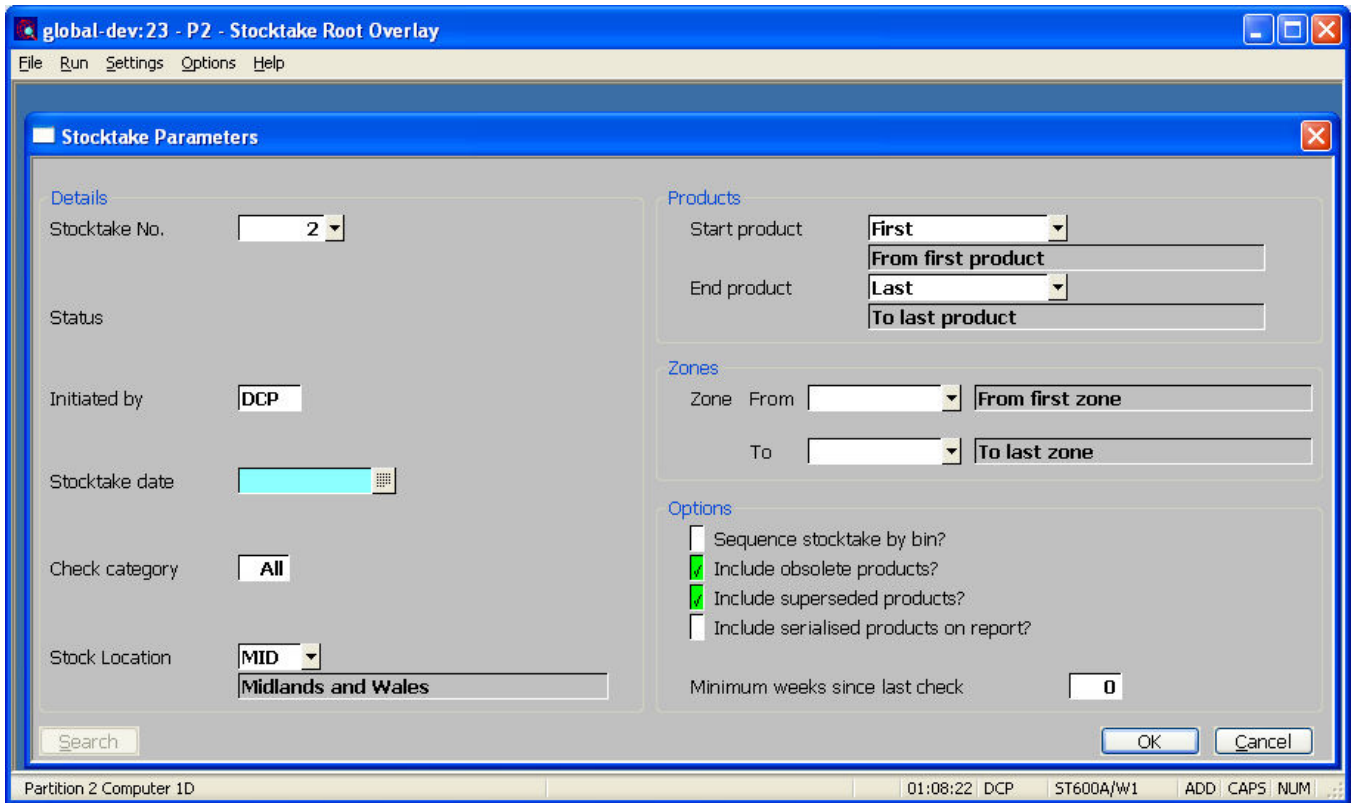
Include bin details on picking list?

When set:

- If multiple bin handling is in use, the bin number and where applicable zone are included on the picking list.
- If multiple bin handling is not in use, the bin location where applicable is included on the picking list.

Author	DCP		
Project	ZM60_000344		
Version	1.0		34 of 37

Stocktake Parameters Window



The prompts are:

- Sequence Stocktake by bin?** (Only available when freezing stock at the start of a new stocktake) When set:
- The stocktake reports are produced in bin sequence.
 - If the system is configured for multiple bin handling stock count details are entered in bin sequence during stocktake input.
 - If the system is not configured for multiple bin handling stock count details can be entered in either product sequence or in bin sequence during stocktake input.

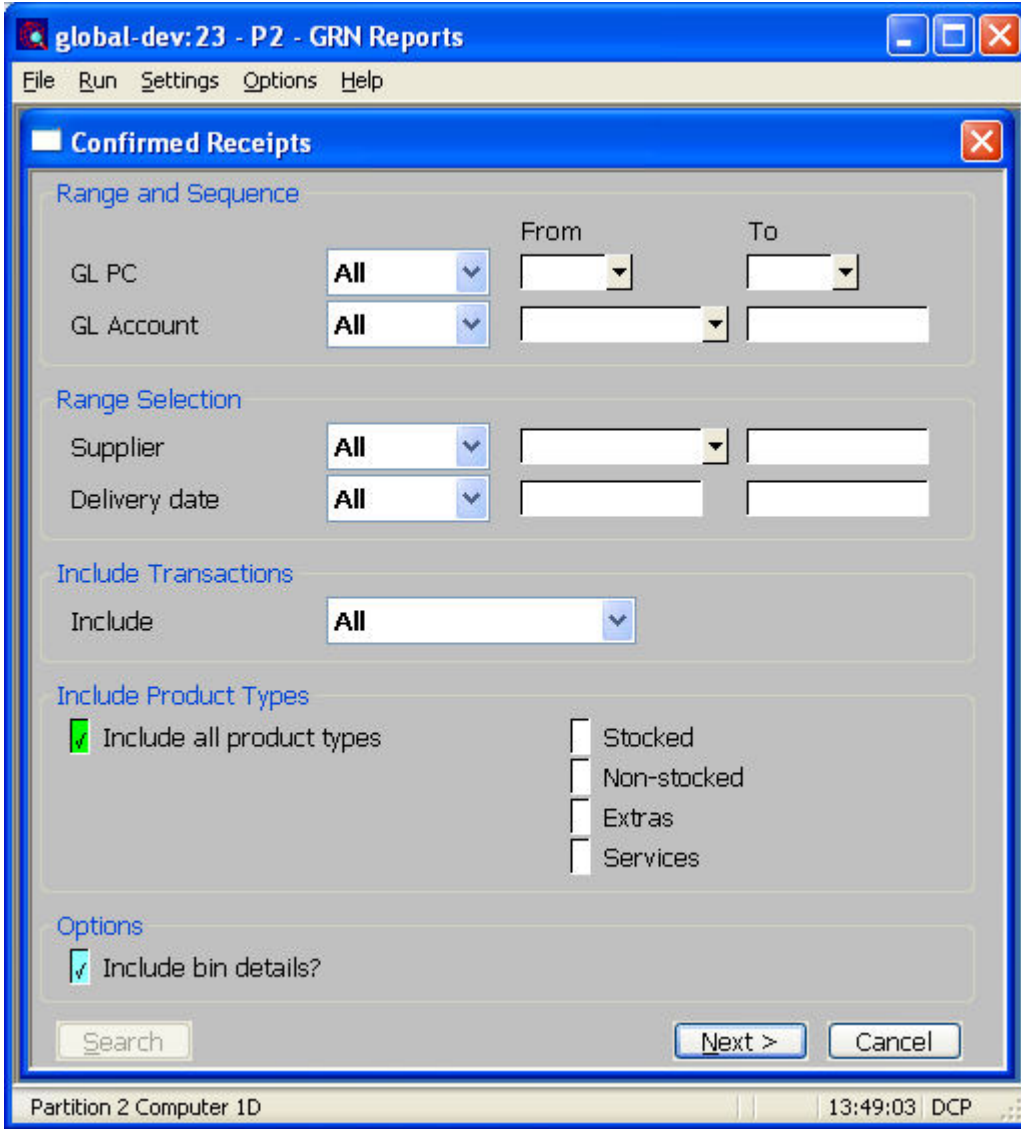
Note In systems configured to use multiple bin handling the above prompt refers to bin numbers, if the above prompt is not set you select the bins to be adjusted when the stock levels are adjusted via stocktake update.

In systems that are not configured to use multiple bin handling the above prompt refers to bin locations.

Zone from...to (Only available when freezing stock at the start of a new stocktake (for a specific location) and the system is configured to use multiple bin handling) Set these to limit the stocktake to products held (in bins) at a specific range of zones within the selected location. These can be left blank to include products held in bins belonging to either from the 'first' or to the 'last' zone defined. A search is available.

Author	DCP		
Project	ZM60_000344		
Version	1.0		35 of 37

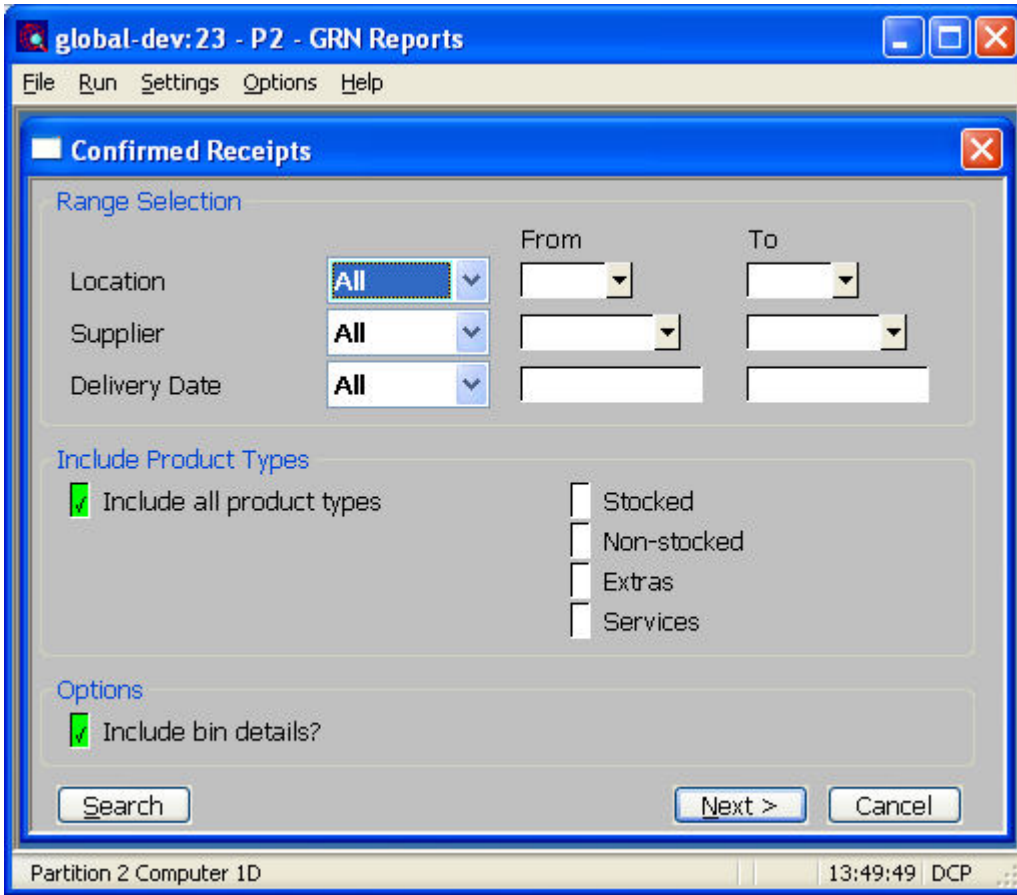
POP Goods Receipts Reports (By GL Code)



Include bin details? *(Only available in systems configured for multiple bin handling)* Set this to include a breakdown of the stock bin numbers in which the receipts have been placed below the received quantity.

Author	DCP	
Project	ZM60_000344	
Version	1.0	36 of 37

POP Goods Receipts Reports (By Product/By Delivery Note)



Include bin details? *(Only available in systems configured for multiple bin handling)* Set this to include a breakdown of the stock bin numbers in which the receipts have been placed below the received quantity.

Author	DCP	
Project	ZM60_000344	
Version	1.0	37 of 37