



Global 3000 Service Pack Note

Manufacturer - Multiple Methods of Manufacture

| | | | |
|----------------|-------------|--|--------|
| Author | DCP | | |
| Project | ZM60_000345 | | |
| Version | 1.0 | | 1 of 7 |

INTRODUCTION

This service pack provides the ability to define and use multiple assembly bills for a product.

The changes are to introduce a new setting within Manufacturer System Parameters (Works Order Entry) labelled 'Multiple methods of manufacture?'.

Methods of manufacture can then be defined via a new option in the Manufacturer system maintenance menu.

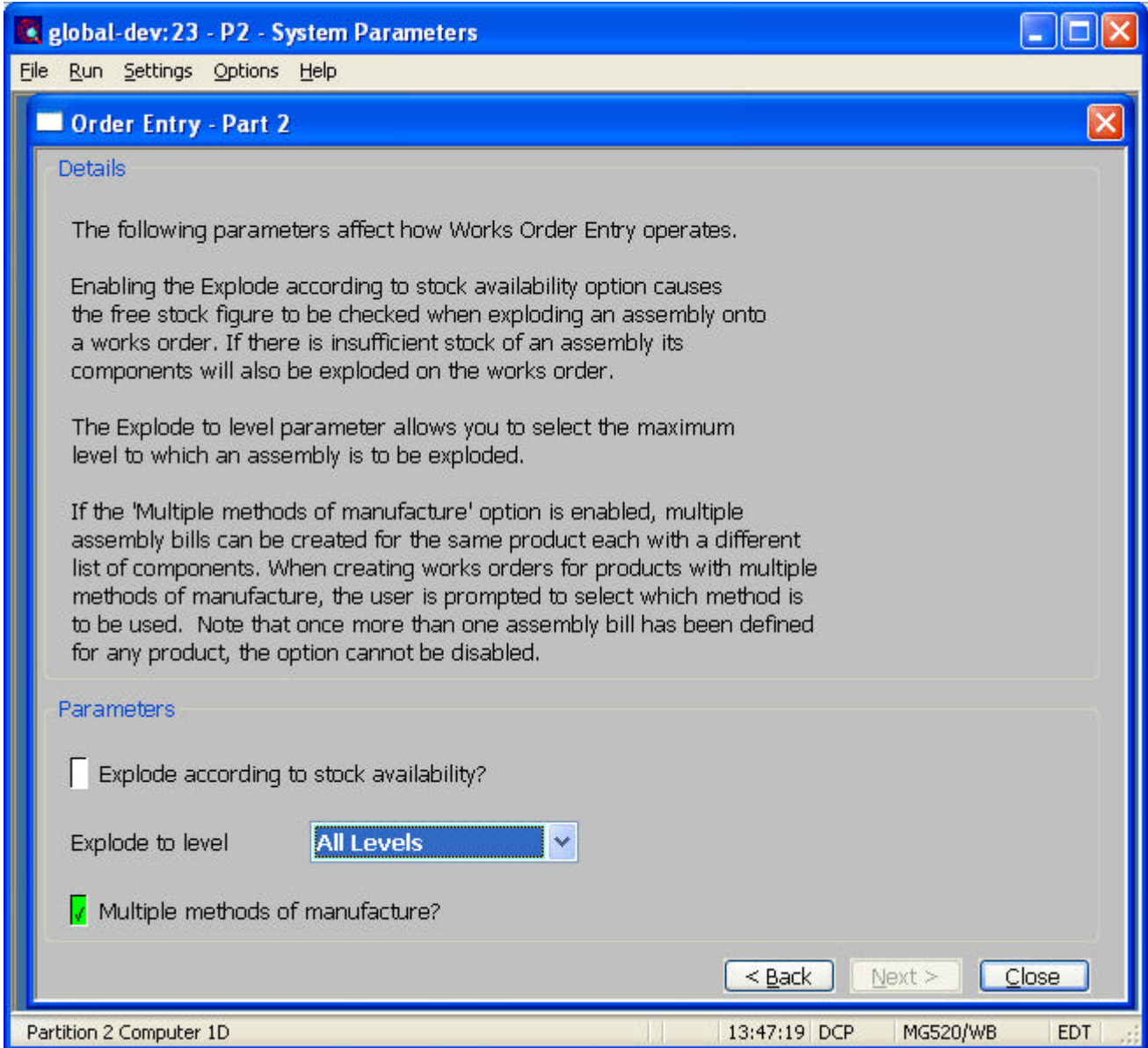
When the new option is set, product maintenance allows for a separate assembly bill to be defined for each method of manufacture.

When entering a works order, the system will prompt for the method to be used if more than one method has been defined.

| | | |
|----------------|-------------|--------|
| Author | DCP | |
| Project | ZM60_000345 | |
| Version | 1.0 | 2 of 7 |

DOCUMENTATION CHANGES

Manufacturer Parameters – Order Entry – Part 2



Multiple methods of manufacture?

Set this to allow multiple methods of manufacture to be defined (via the Manufacturing Methods option within the manufacturer system maintenance menu). Each product can then have one assembly bill per method of manufacture. Works order entry prompts the user to select the method of manufacture (and therefore the assembly bill) to be used in cases where the product being manufactured has more than one method defined.

Note

Once multiple assembly bills have been defined for any product, this option cannot be disabled. When you initially enable this option you are prompted to create a default method of manufacture to be used for all existing products.

| | | |
|----------------|-------------|--------|
| Author | DCP | |
| Project | ZM60_000345 | |
| Version | 1.0 | 3 of 7 |

Manufacturing Methods



This window appears when you select Manufacturing Methods from the Manufacturer System Maintenance menu.

Purpose This window allows methods of manufacture to be defined. These can then be used to identify multiple assembly bills for products.

Note This function is only available if the system has been configured to use multiple manufacturing methods.

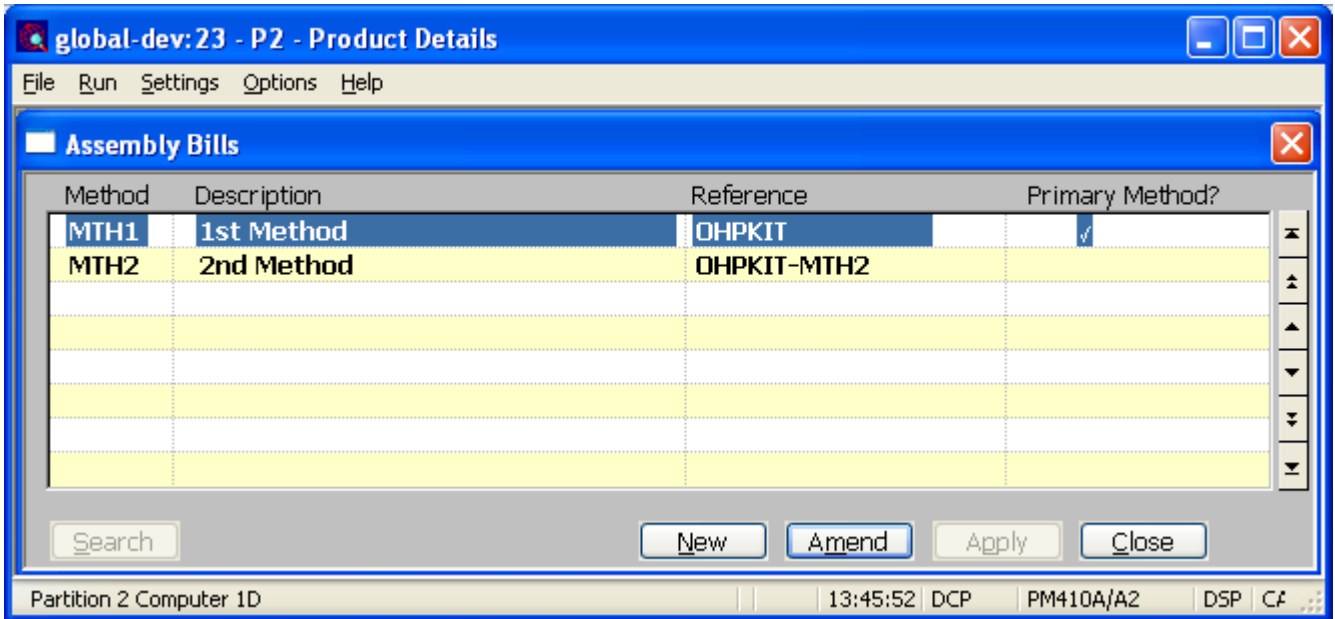
The prompts are:

Method Enter a code to identify the method of manufacture. Each product can have one assembly bill per method of manufacture.

Description Enter a description for the method of manufacture.

| | |
|----------------|-------------|
| Author | DCP |
| Project | ZM60_000345 |
| Version | 1.0 |
| | 4 of 7 |

Product Maintenance – Assembly bills



This window appears when you select Assembly Bills from the Product Maintenance window if the Multiple assembly bills option has been enabled.

Purpose This window allows one or more assembly bills to be defined for the selected product.

The prompts are:

Method Enter the code for the method of manufacture. Search available.

Description The description for this method will be displayed.

Reference Enter the reference for this method. This reference must be unique, and must not match any existing product or alias codes; it is used to identify the assembly bill. The system creates a default value by concatenating the product code and method, separated by a hyphen if space permits.

Primary Method? Set this if this is the primary manufacturing method for the product.

| | | | |
|----------------|-------------|--|--------|
| Author | DCP | | |
| Project | ZM60_000345 | | |
| Version | 1.0 | | 5 of 7 |

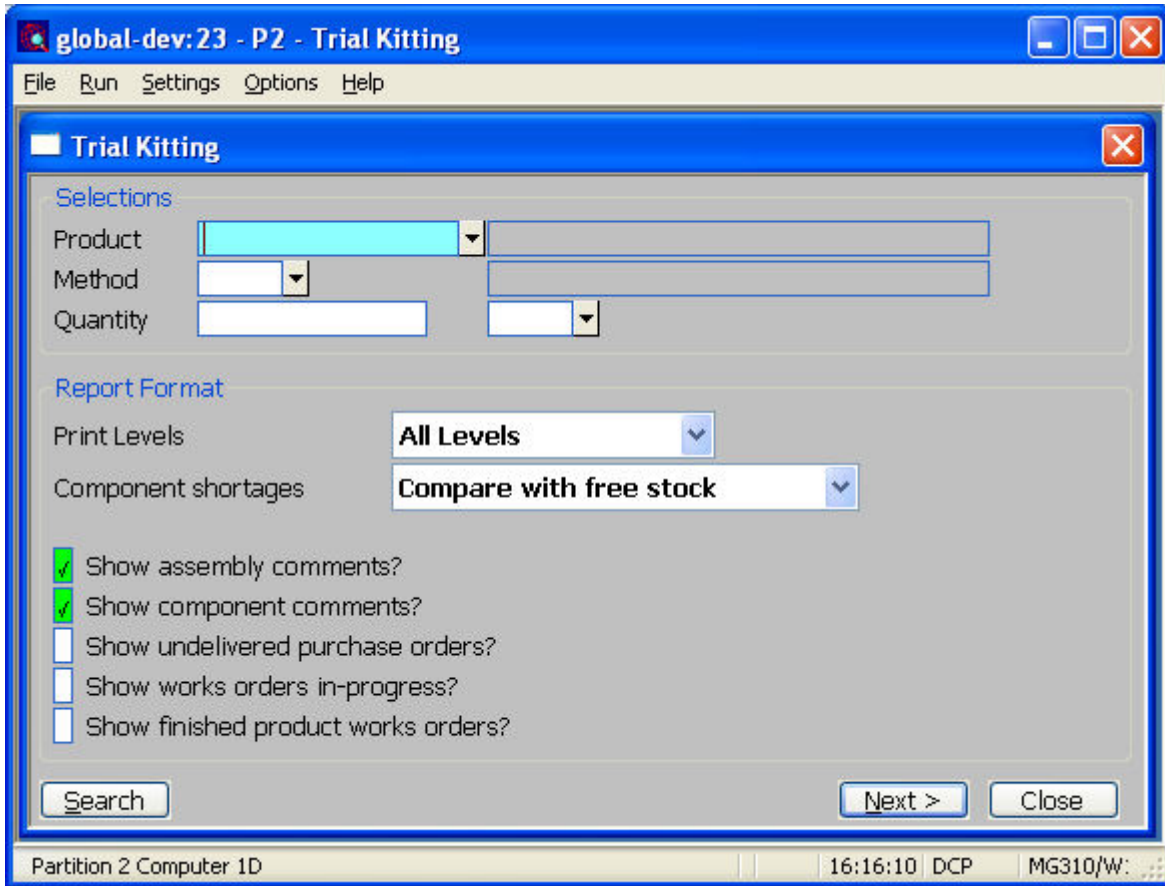
Works Order entry

The prompts are:

Method *(Only if the system is configured to use multiple manufacturing methods and the product has more than one assembly bill)* Enter the method and therefore the assembly bill to be used to manufacture the product. This is automatically set and skipped for products with only one assembly bill. A search is available.

| | |
|----------------|-------------|
| Author | DCP |
| Project | ZM60_000345 |
| Version | 1.0 |

Trial Kitting



The prompts are:

Method *(Only if the system is configured to use multiple manufacturing methods and the product has more than one assembly bill)* Enter the method and therefore the assembly bill to be used during trial kitting. This is automatically set and skipped for products with only one assembly bill. A search is available.

| | | |
|----------------|-------------|--------|
| Author | DCP | |
| Project | ZM60_000345 | |
| Version | 1.0 | 7 of 7 |