



# Global 3000 Service Pack Note

## Open Transactions Report - GL Analysis

<b>Author</b>	DCP	
<b>Project</b>	ZM60_000436.docx	
<b>Version</b>	1.0	1 of 3

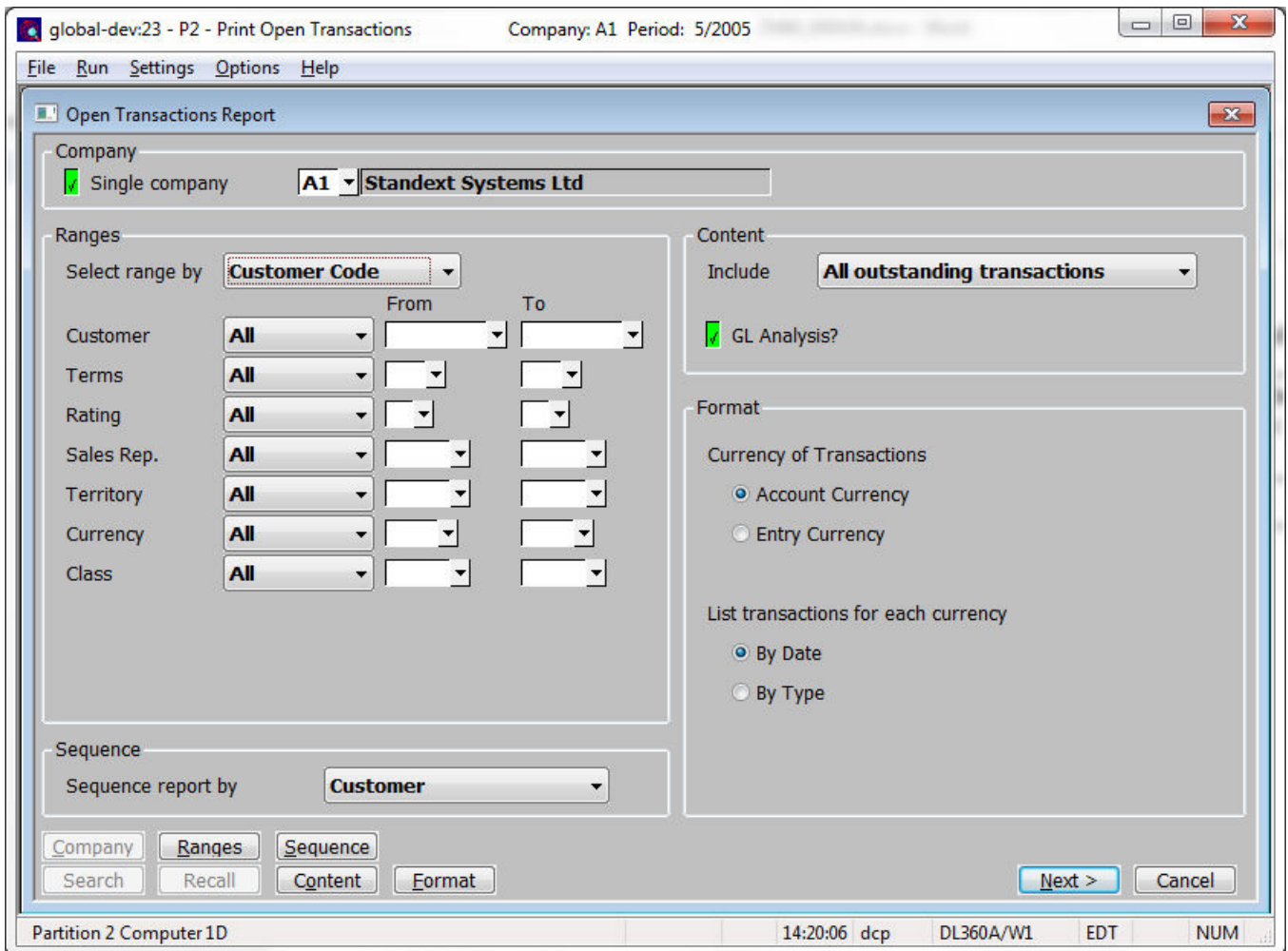
## INTRODUCTION

This service pack updates the Open Transactions report to include GL analysis details.

The open transactions report has been updated to provide a new option (labelled 'GL Analysis'). When the new option is selected the report includes the GL Analysis following each transaction. The GL analysis is also available when the report is exported.

## DOCUMENTATION CHANGES

### DL Open Transactions Window



**GL Analysis?** Select this to include GL analysis details on the report/export.

<b>Author</b>	DCP	
<b>Project</b>	ZM60_000436.docx	
<b>Version</b>	1.0	2 of 3

# CL Open Transactions Window

**GL Analysis?** Select this to include GL analysis details on the report/export.

## REPORT LAYOUT CHANGES

When the option to include GL analysis is selected the company, profit centre, GL account and amount is printed (or available for export) following the transaction to which they relate.

<b>Author</b>	DCP	
<b>Project</b>	ZM60_000436.docx	
<b>Version</b>	1.0	3 of 3