



Global 3000 Service Pack Note

Withholding Tax - Default Percentages

Author	DCP		
Project	ZM60_000458		
Version	1.0		1 of 4

INTRODUCTION

This service pack provides the ability to hold a table of default withholding tax percentages.

In a number of countries (Ghana for example) companies are expected to deduct and withhold income tax when suppliers are paid. Withholding tax is deductible from payment for the supply of goods and services. Withholding tax is **not** related to transaction tax handling (e.g. UK VAT).

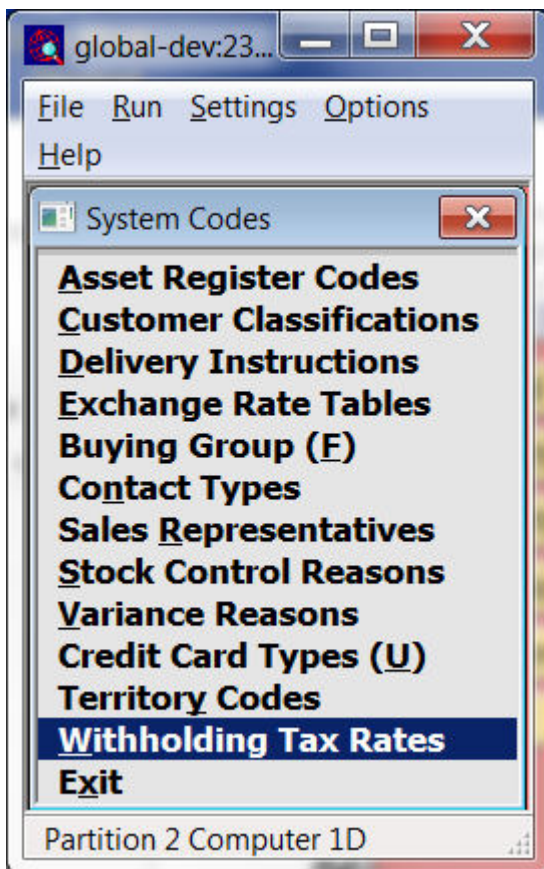
The following changes have been made:

- System Maintenance has been updated to allow a table of withholding tax rates to be defined.
- Supplier Maintenance has been updated to prompt for a default rate letter rather than a default percentage for withholding tax.
- Transaction Entry and allocation have been updated to provide a search of existing rates when prompting for the withholding tax percentage.

Please note, for existing sites already configured to use withholding tax a standalone upgrade program (WHTRTE) is available upon request.

DOCUMENTATION CHANGES

Administration Parameters – System Codes

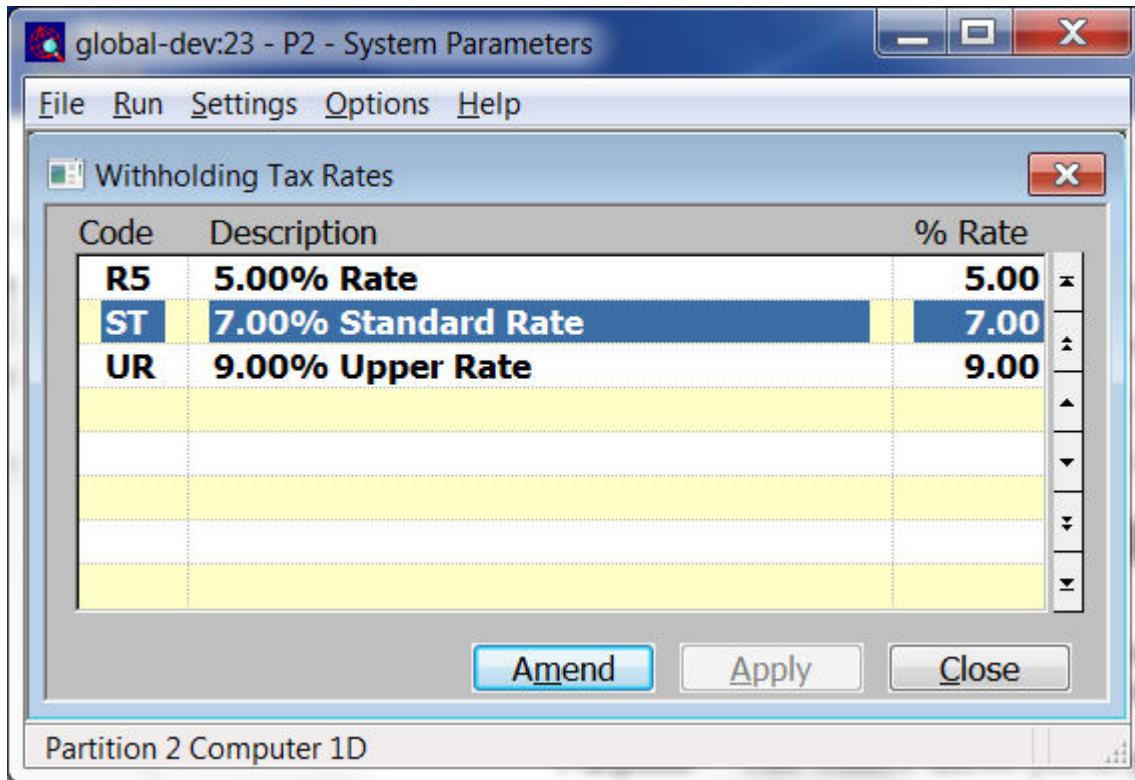


Withholding Tax Rates (Only available if withholding tax is in use) This allows the table of default withholding tax percentage rates to be entered and maintained.

Author	DCP
Project	ZM60_000458
Version	1.0

2 of 4

System Codes – Withholding Tax Rates



This window appears when you select 'Withholding Tax Rates' from the system codes menu within the administration system parameters.

Purpose This window allows you to enter and maintain the table of default withholding tax rates.

The prompts are:

Code Set this to the code to be associated with the percentage rate of tax to be withheld.

Description Enter the description for this rate.

Rate Enter the percentage of withholding tax.

Author	DCP	
Project	ZM60_000458	
Version	1.0	3 of 4

CL Supplier Maintenance

Supplier	Name	Postcode	EDI Account
ANT015	Antec (UK) Ltd	CR6 8JK	ANTEC(UK)
AVPG005	AVP Victor Optik GmbH		AVP VICTOR OPTIK
BANT015	Banner Ltd	WR1 1BL	BANNER(WORCESTER)
BANTAK	Bantak Suppliers of Singapore		BANTAK HONG KONG
GREY010	Grey Plastics		GREYPLASTICS
IXLG001	Ixland (GB) Ltd	NP8 4QU	IXLAND (GB) LTD
LOND005	London Electricity Board	SL1 9AJ	LEB (MAIDSTONE)
MANCO...	Manchester Electricity Board	M1 7AP	ELECTRICITYMANCHEST
MIDL010	Midlands Electricity Board	NG7 8UY	ELECTRIC MIDLANDS
MYER010	Myelars Ltd	BH12 0HU	MYELARS
OLIV005	Oliffe		OLIFFE ITALIA
PEND001	Pendlebury Office Services	CW12 9AP	PENDLEBURY PAPER

General Details

Priority: 1 Priority 1

Type: OVER Overhead

Overhead percentage: 0.00%

VAT Status: Normal Account currency: GBP Sterling

Account status: Active Company registration number (CRN):

Account mode: Normal Date account opened: 27/10/2000

Withholding tax? ST 7.00%

Paid by factor?

Internal references?

Buttons: Search, Addresses, Contacts, Edj details, New, Find, Delete, Amend, Apply, Close, Document, Letter, Notes, Actions, Registration, Companies.

Change:

Withholding tax percentage (Only available if tax is withheld from payments for this supplier) Set this to the default tax percentage to be withheld from payments to this supplier.

To:

Withholding tax rate (Only available if tax is withheld from payments for this supplier) Set this to the code for the default tax percentage that is to be withheld from payments to this supplier. A search is available.

Withholding tax percentage (Display only. Only available if tax is withheld from payments for this supplier) The default withholding tax percentage rate.

Author	DCP
Project	ZM60_000458
Version	1.0