



# Global 3000 Service Pack Note Selective Reprice Products

## INTRODUCTION

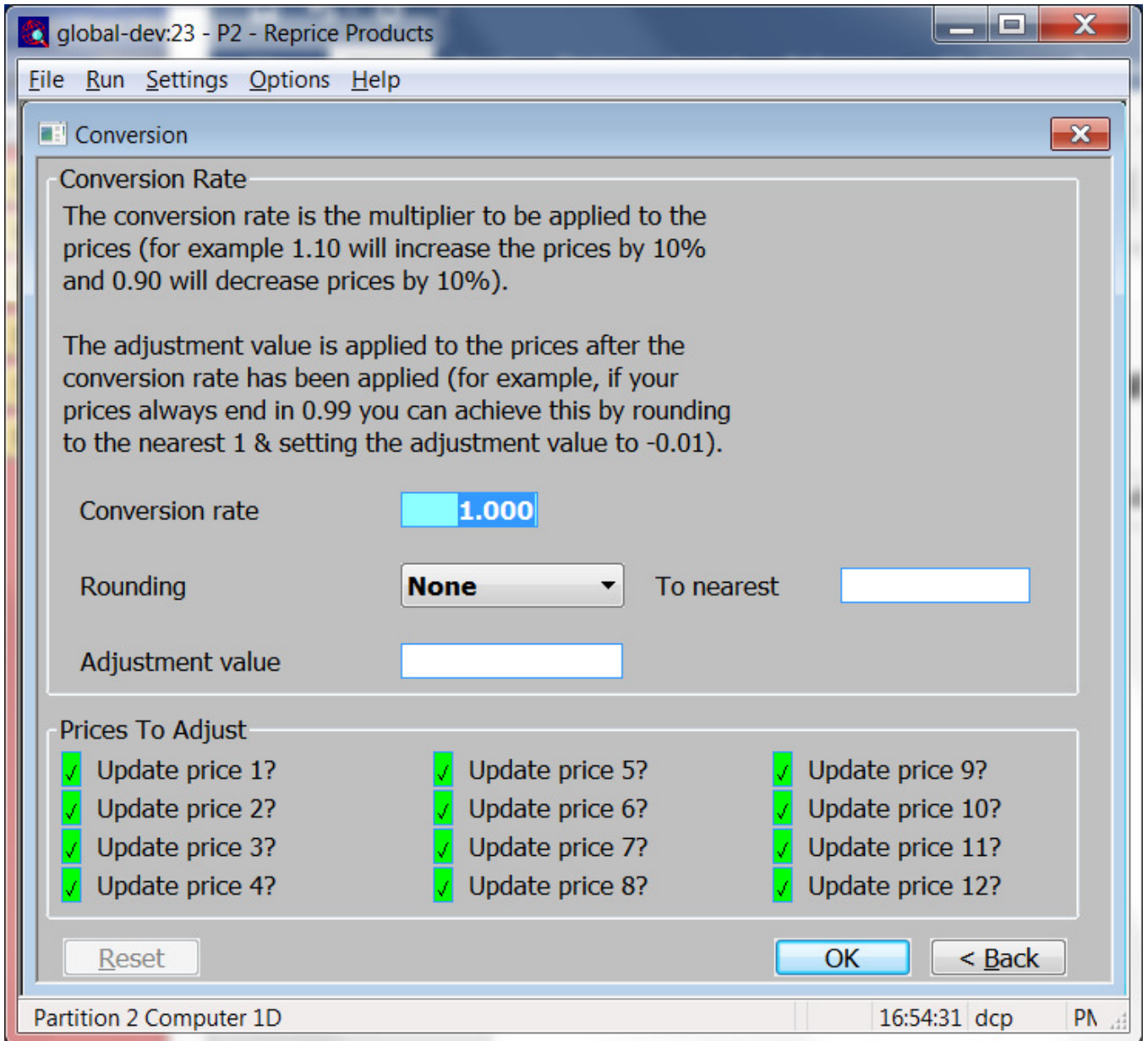
<b>Author</b>	DCP		
<b>Project</b>	ZM60_000488.docx		
<b>Version</b>	1.0		1 of 2

These changes provide the ability to reprice selective prices rather than all 12.

The changes are to update the reprice products function to allow the user to select which of the 12 potential prices are to be recalculated.

## DOCUMENTATION CHANGES

### Reprice Products – Conversion Window



**Update price 1..12** If set, the corresponding price in the price list entry will be recalculated.

**Reset** When pressed all 12 prices are selected for update.

<b>Author</b>	DCP	
<b>Project</b>	ZM60_000488.docx	
<b>Version</b>	1.0	2 of 2