



Global 3000 Service Pack Note GL Account Search Sequence

INTRODUCTION

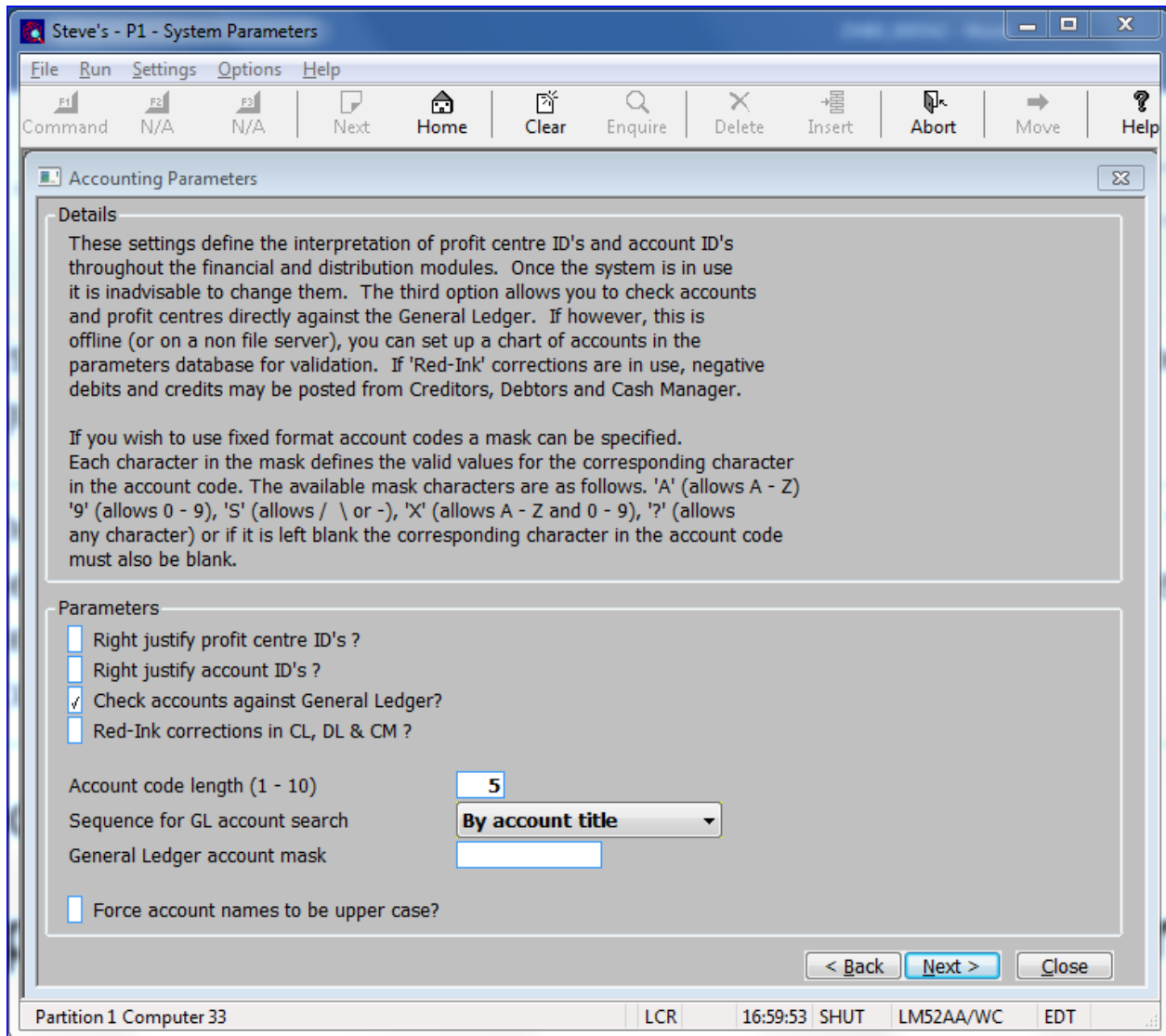
Author	DCP		
Project	ZM60_000542.docx		
Version	1.0		1 of 2

This service pack provides the ability to choose how the General Ledger account search is sequenced.

The changes introduce a new system parameter named 'Sequence for GL account search' in the operating options section of the administration system parameters. This controls whether the search available from General Ledger account prompts, lists the accounts in account code or account title sequence.

DOCUMENTATION CHANGES

Operating Options – Accounting Parameters Window



Sequence for GL account search (Only available if accounts are checked against General Ledger). This controls the sequence of General Ledger account searches. Select one of the following from a drop down menu:

- By account title.
- By account code.

Author	DCP		
Project	ZM60_000542.docx		
Version	1.0		2 of 2