



Global 3000 Service Pack Note Transaction Enquiries

Author	DCP		
Project	ZP60_000157.doc		
Version	1.0		1 of 4

INTRODUCTION

This service pack provides the ability to search for transactions within enquiries regardless of their type.

A 'Transaction Query' option has been added to transaction enquiries. When selected the standard transaction find window is displayed. On exit, all matching transactions for the current account are listed for further enquiry (regardless of their type).

DOCUMENTATION CHANGES

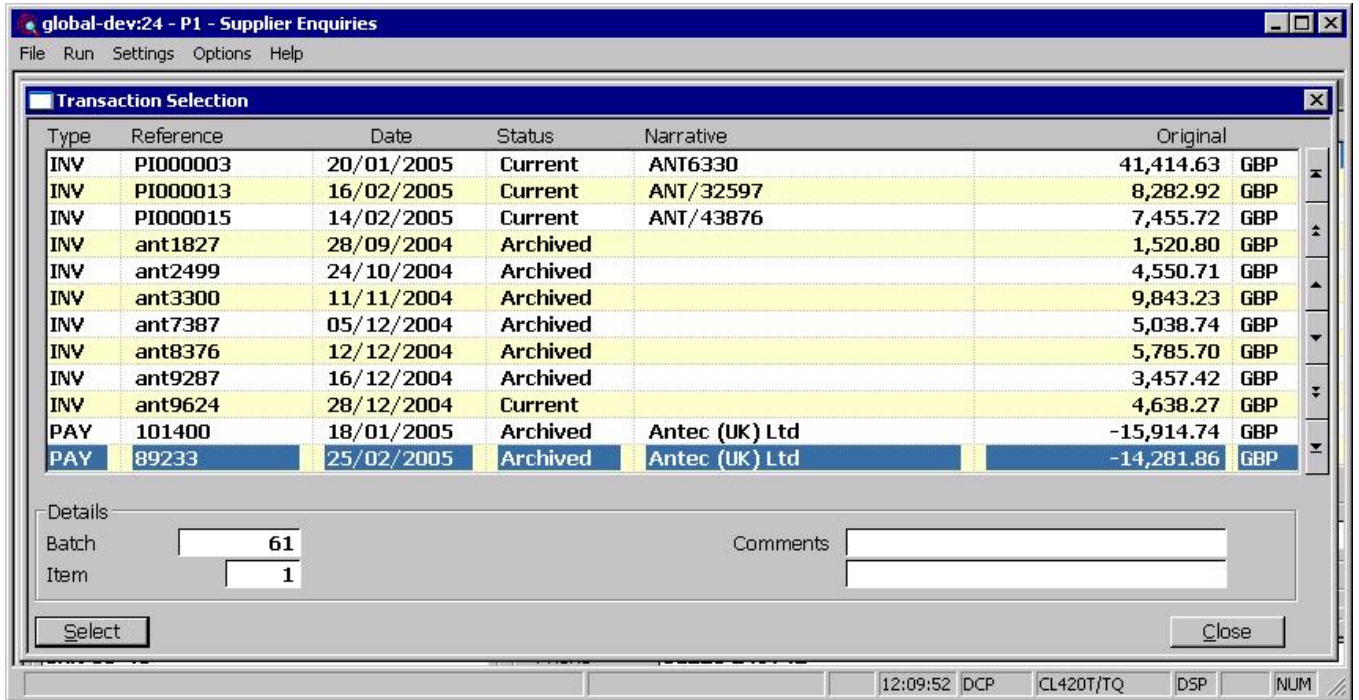
Transaction Options Window



Transaction Query This option allows transactions for the current supplier to be located based on specific search criteria.

Author	DCP	
Project	ZP60_000157.doc	
Version	1.0	2 of 4

Selected Transactions Window



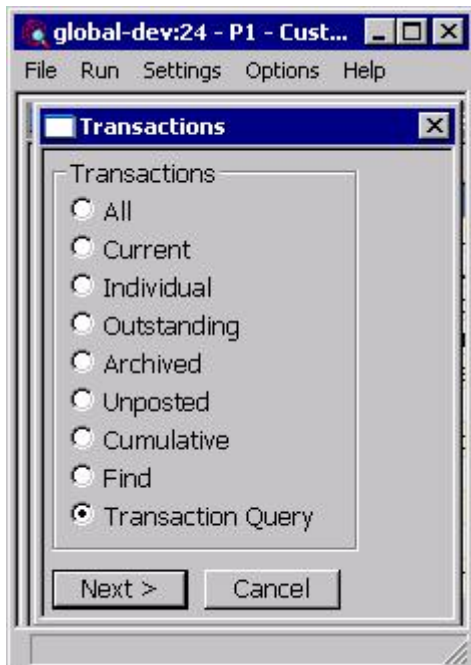
This window appears when you press the 'Find' button within the 'Transaction Find' window initiated via the 'Transaction query' option.

Purpose This window lists transactions matching search criteria entered via the transaction query option.

The buttons are:

Select This displays details of the currently high-lighted transaction for further enquiry.

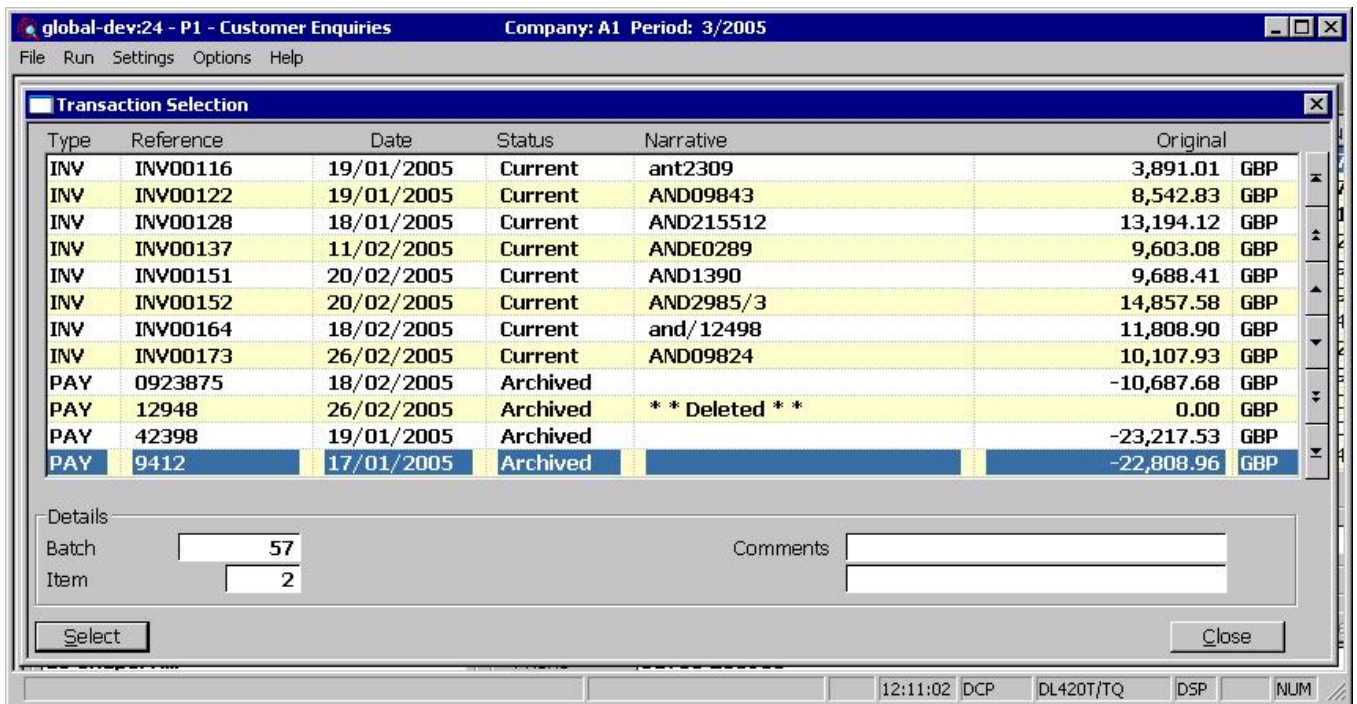
Transaction Options Window



Author	DCP
Project	ZP60_000157.doc
Version	1.0

Transaction Query This option allows transactions for the current customer to be located based on specific search criteria.

Selected Transactions Window



This window appears when you press the 'Find' button within the 'Transaction Find' window initiated via the 'Transaction query' option.

Purpose This window lists transactions matching search criteria entered via the transaction query option.

The buttons are:

Select This displays details of the currently high-lighted transaction for further enquiry.

Author	DCP
Project	ZP60_000157.doc
Version	1.0
	4 of 4