



# Global 3000 Service Pack Note Account Opened Date

<b>Author</b>	DCP		
<b>Project</b>	ZP60_000222.doc		
<b>Version</b>	1.0		1 of 4

## INTRODUCTION

This service pack allows the account opened date to be specified for suppliers.

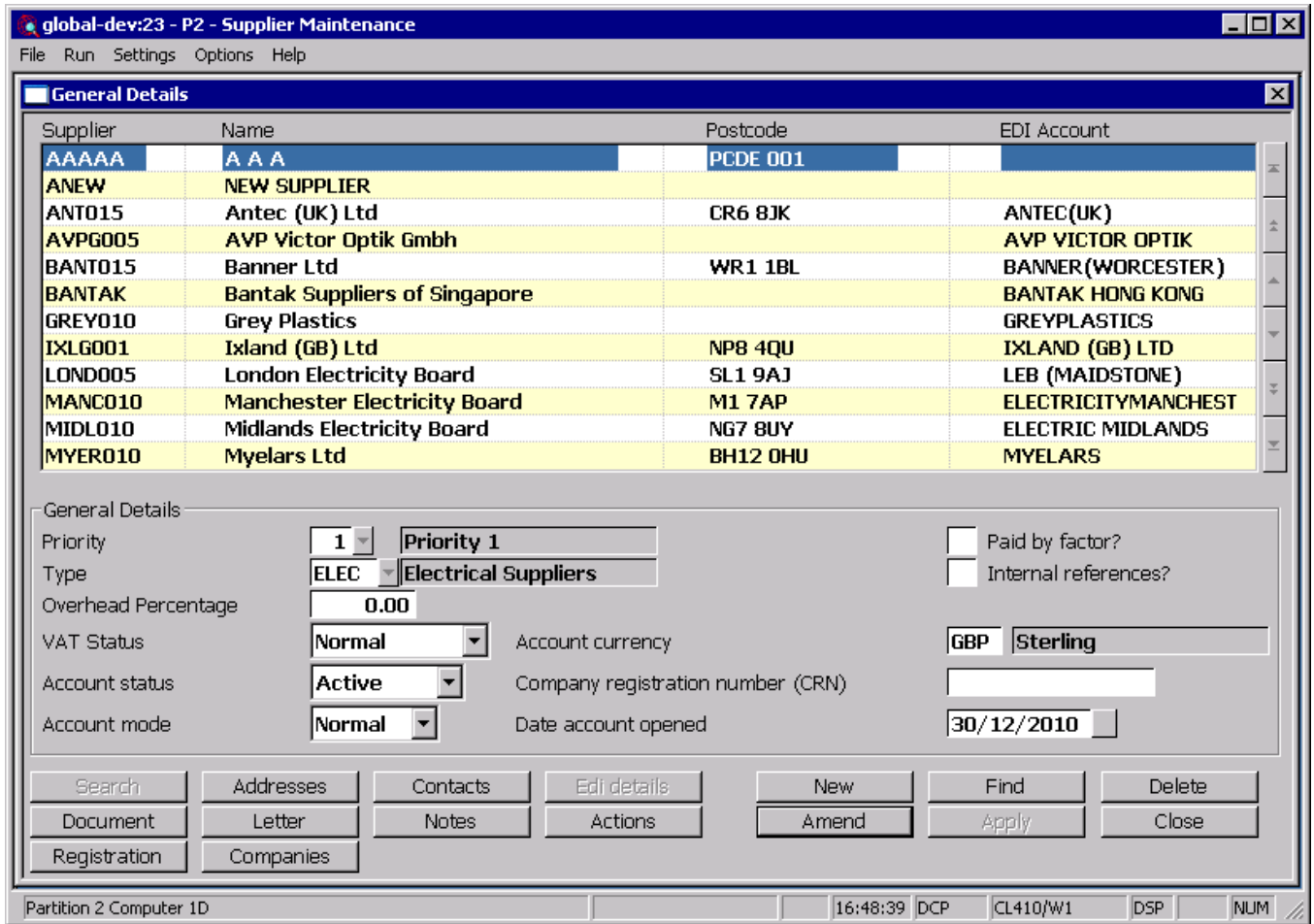
Previously when a new account was created in Creditors Ledger the system automatically set the 'Account opened date' to the current system date. However, this did not take into account situations where data was created in advance of a user 'going live'.

The following changes have been made:

- Supplier maintenance will be updated to show and allow amendment of the account opened date,
- Supplier enquiries will be updated to show the account opened date.

<b>Author</b>	DCP	
<b>Project</b>	ZP60_000222.doc	
<b>Version</b>	1.0	2 of 4

# Supplier Maintenance



**Date account opened** Enter the date the account was opened. For new accounts this has an initial default of the system date.

<b>Author</b>	DCP
<b>Project</b>	ZP60_000222.doc
<b>Version</b>	1.0
	3 of 4

# Enquiries

global-dev:23 - P2 - Supplier Enquiries

File Run Settings Options Help

**Supplier Details (ANT015 - Antec (UK) Ltd ) for Company A1**

**Account Information**

Supplier	ANT015	Antec (UK) Ltd	Account opened	03/07/1999
Account currency	GBP	Sterling	Account status	Active
Trading terms	3M	Due 90 Days	VAT status	Normal
Type	ELEC	Electrical Suppliers	Credit limit	
Priority	1	Priority 1	Payment method	Cheque

**Account Settings**

- Paid by factor?
- Internal references?
- Auto-payment?
- Held?
- Key supplier?
- Email purchase orders?
- Remittances required?
- Email remittances?

**Contact Details**

Contact	Mel Peters
Phone	01223 249742
Fax	
Mobile	
Email	mel@antecuk.co.uk
http://	
Method	Telephone

**General Ledger**

Default profit centre		Default account	
Control profit centre		Control account	
Autopost profit centre modifier		Autopost account modifier	

Bank Details Close

Partition 2 Computer 1D 16:49:40 DCP CL420B/WS EDT NUM

**Account opened** The date the account was opened.

<b>Author</b>	DCP		
<b>Project</b>	ZP60_000222.doc		
<b>Version</b>	1.0		4 of 4