



Global 3000 Service Pack Note

Sales Order Completion Statistics

Author	DCP		
Project	ZS60_000117.doc		
Version	1.0		1 of 4

INTRODUCTION

This service pack introduces a new function which provides the ability to calculate the number of orders completed (fully invoiced) within a specified number of days (of the date that the order was placed).

The new function provides the ability to calculate and display the percentage of orders that were completed (i.e. fully invoiced) within a specific number of days of the date that they were placed.

The changes are:

A new program option (Order Completion Statistics) has been added to the Order Enquiries and Reports menu. It displays the following information:

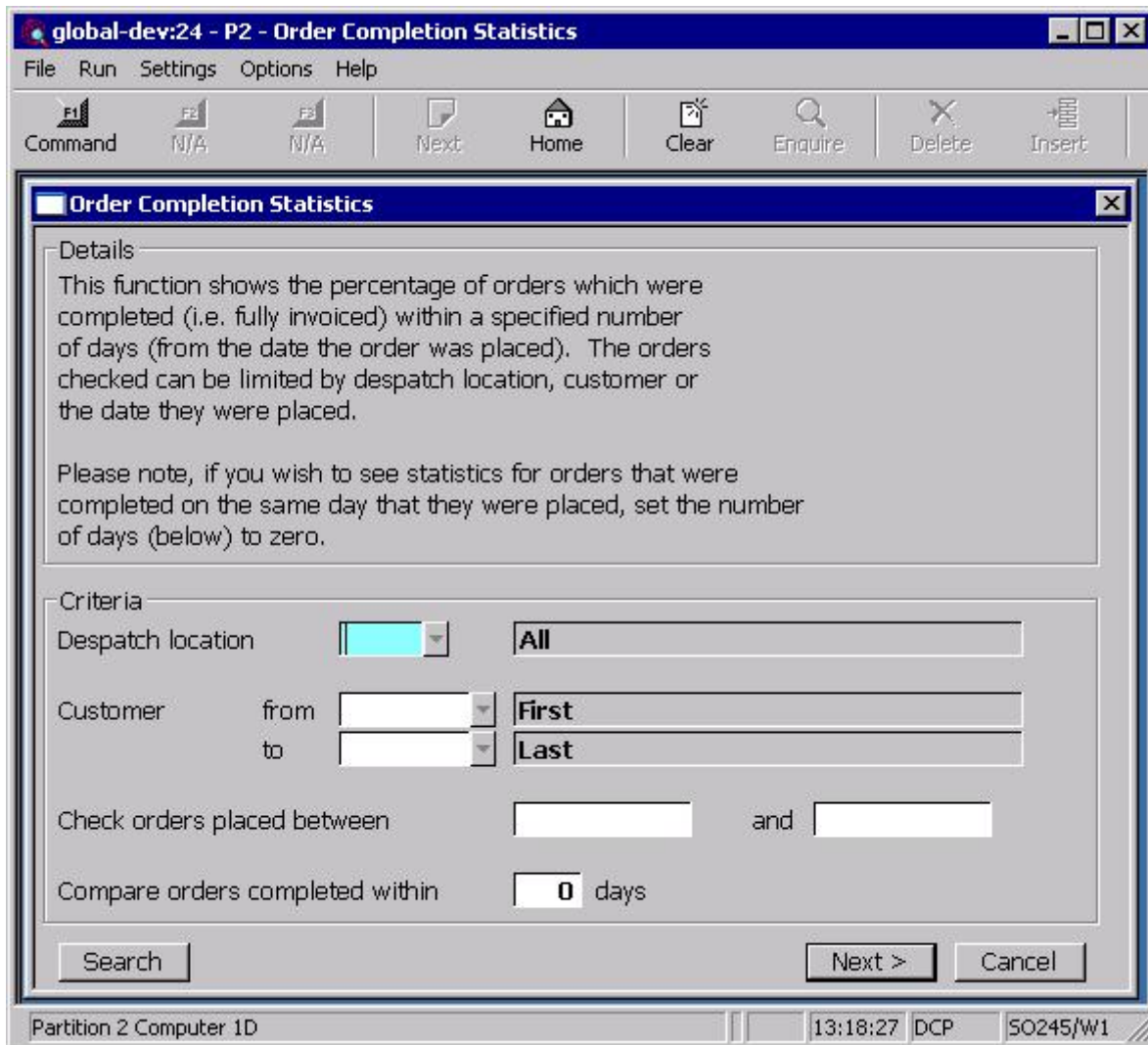
- Count of orders placed
- Count and percentage of orders fully completed within a user specified number of days
- Count and percentage of orders not fully completed within a user specified number of days

The program includes orders based on the following selection criteria.

- Despatch location (all or a single location)
- Range of customer accounts
- Range of order dates

Author	DCP	
Project	ZS60_000117.doc	
Version	1.0	2 of 4

Order Completion Statistics Window



This window appears when you select 'Order Completion Statistics' from the 'Order Enquiries and Reports' menu.

Purpose This function shows the percentage of orders which were completed (i.e. fully invoiced) within a specified number of days (from the date the order was placed). The orders checked can be limited by despatch location, customer or the date they were placed.

The prompts are:

Despatch location Set this to limit the orders included based on their despatch location. This can be left blank to include orders despatched from all locations. A search is available.

Customer from...to Set these to limit the orders included based on the customer. These can be left blank to include orders either the 'first' or 'last' customer on file. A search is available.

Author	DCP		
Project	ZS60_000117.doc		
Version	1.0		3 of 4

Check orders placed between Set these to limit the orders included based on the date the orders were placed.

Note Only normal sales orders are included in the statistics.

Compare orders completed within...days Set this to the number of days you wish to check that orders were fully completed by.

Note If you wish to see statistics for orders that were completed on the same day that they were placed, set the number of days to zero.

The buttons are:

Next> Select this to show the order completion statistics based on the selected criteria.

Cancel Select this to return to the Order Enquiries and Reports menu.

Order Completion Statistics Results Window

Order Completion Statistics - Results			
Details			
Orders placed	between	01/01/2003	87
	and	31/05/2009	
Number of orders completed within	15 days	82	94.25 %
Number of orders not completed within	15 days	5	5.75 %

Author	DCP		
Project	ZS60_000117.doc		
Version	1.0		4 of 4