



Global 3000 Service Pack Note

Global 3000 SOP - Add/Amend Services and Extras During Despatch Confirmation

Author	DCP		
Project	ZS60_000229.docx		
Version	1.0		1 of 2

INTRODUCTION

The requirement is to update SOP Despatch Confirmation to allow the manual addition and amendment of delivery charges.

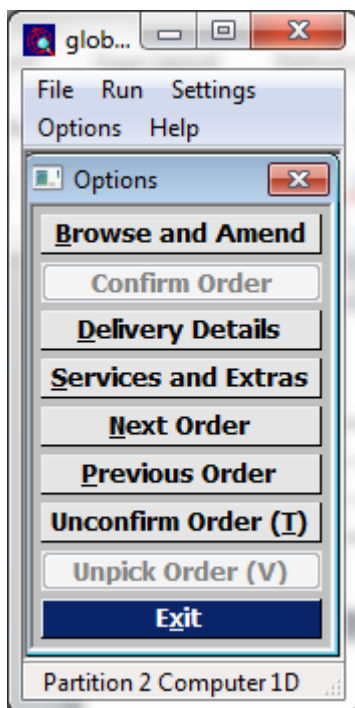
There are a number of ways in which an automatic delivery charge can be applied to an order. This service pack introduces the ability to manually apply a delivery charge at the point the goods are despatched.

A new option labelled 'Services and Extras' has been added to the order 'Options' menu within Despatch Confirmation. When selected the current order is opened within the SOP Transaction Desktop in a special mode that only allows the addition or amendment of lines for service and extra products. Existing lines for other product types are displayed but cannot be updated.

The new option is controlled by authorisation point 'SO340_SERV'.

DOCUMENTATION CHANGES

Despatch Confirmation – Order Options



Services and Extras Select this to display the order and allow the addition and amendment of lines for services and extras. For example to manually apply/adjust a delivery charge at the point the goods are despatched.

Note This option (which is controlled by an authorisation point) invokes the SOP Transaction Desktop to process the current order in a special mode that allows the addition and amendment of lines for services and extras. Lines for other product types are displayed but cannot be changed.

Author	DCP	
Project	ZS60_000229.docx	
Version	1.0	2 of 2