



Global 3000 Service Pack Note

Allocate works orders from SOP

Author	DCP		
Project	ZV60_000023.doc		
Version	1.0		1 of 3

INTRODUCTION

SOP automatic allocation has been extended so that works orders can be allocated at the same time as sales orders.

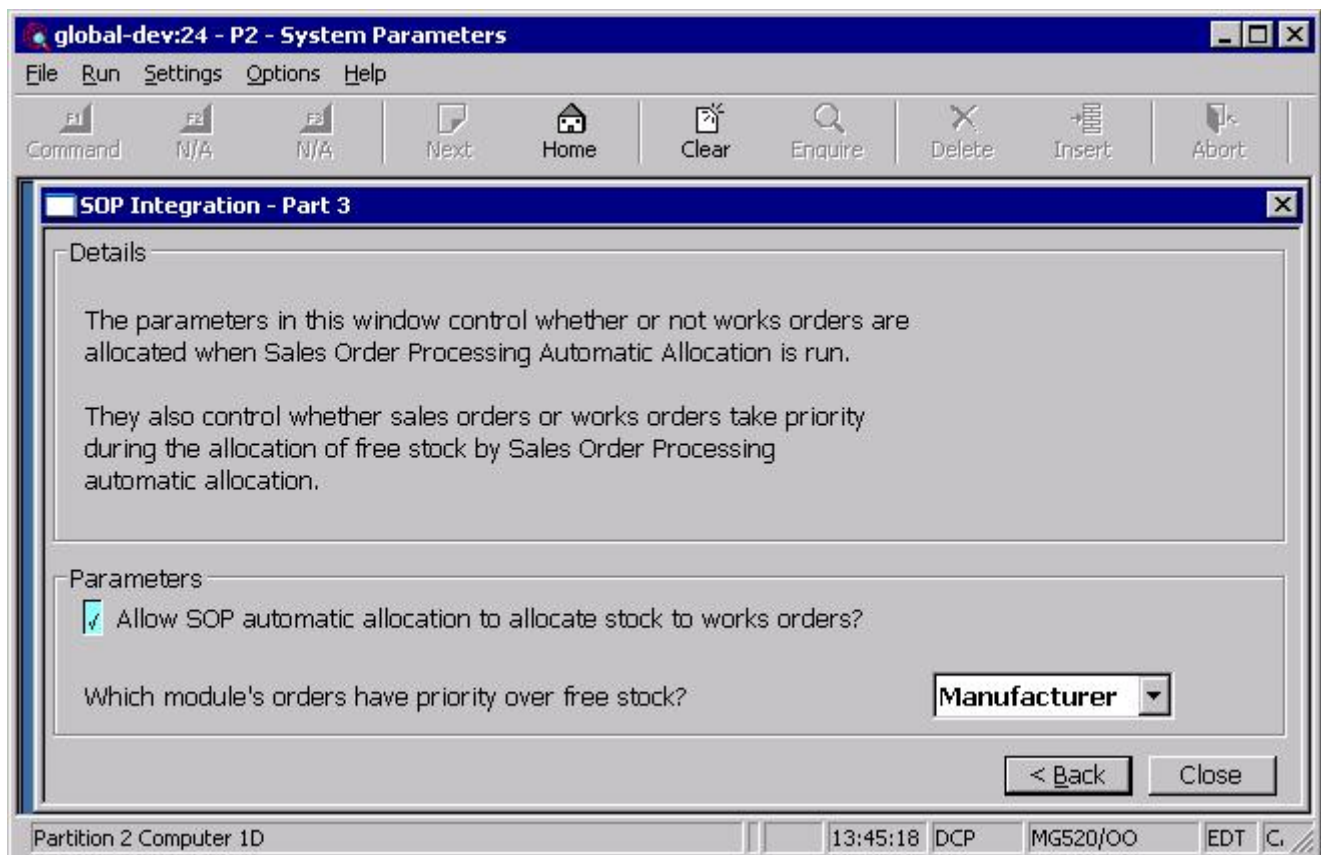
Works orders can now be allocated at the same time as sales orders so that the users do not have to run two different functions in two packages.

A new parameter window has been added to the SOP Integration parameters of Manufacturer, it contains a setting to determine if SOP Automatic allocation should allocate works orders as well as sales orders and a second parameter which controls which package's order lines are allocated first, i.e. which module has priority over any free stock.

The process in automatic allocation that processes sales order lines for the current product has been updated to process works order lines as well.

DOCUMENTATION CHANGES

SOP Integration – Part 3



Author	DCP	
Project	ZV60_000023.doc	
Version	1.0	2 of 3

This window appears when you select 'Next' on the SOP Integration – part 2 window.

Purpose The parameters in this window are used if you want the SOP Automatic allocation function to also allocate stock to works orders.

Allow sop automatic allocation to allocate stock to works orders? Set this parameter if you want the SOP automatic allocation function to also allocate free stock to works orders.

Which module's orders have priority over free stock? (Only if the SOP automatic allocation parameter has been enabled). Select from one of S.O.P or Manufacturer to specify which module's orders take priority during the allocation of free stock by automatic allocation.

Orders in the selected module are checked for back-ordered stock first, any remaining free stock is then allocated to the other module afterwards.

Automatic Allocation

Stock allocation This phase allocates stock from the stock pool to order and requisition lines, and matches stock queue arrivals with requests. It produces a report. You can choose whether this is a full allocations report, or is restricted to details of what cannot be allocated or reserved and why.

First the program checks all active batches of batch tracked stock. If a batch has expired the program marks it as 'Requires Inspection', and reverses any allocations that have already been made against it.

The program then steps through sales order and stock requisition lines in location/product/reference sequence. It allocates stock from the stock pool and matches stock queue arrivals with requests. Processing is primarily dependent upon the type of allocation strategy associated each line; i.e. pooled or queued.

If the "Allow sop automatic allocation to allocate stock to works orders?" parameter has been set, the stock allocation phase also attempts to allocate stock to works orders. The setting of the "Which module's orders have priority over free stock" parameter determines which module's orders have priority over the available stock.

Author	DCP	
Project	ZV60_000023.doc	
Version	1.0	3 of 3