



Global 3000 Service Pack Note

Works Orders - Write Offs

Author	DCP		
Project	ZV60_000031.doc		
Version	1.0		1 of 6

INTRODUCTION

This service pack provides the ability to write off the remaining quantity of a works order and any unused components.

A new option labelled 'Allow write-offs during completion' has been added to the Manufacturer - Completion system parameters along with an optional password to protect the new feature.

If the "Allow write-offs during order completion" option is enabled and all components have been issued to the order, you may enter zero as the completed quantity within Works Order Completion to reduce the remaining quantity of the works order to zero and write-off any unused components.

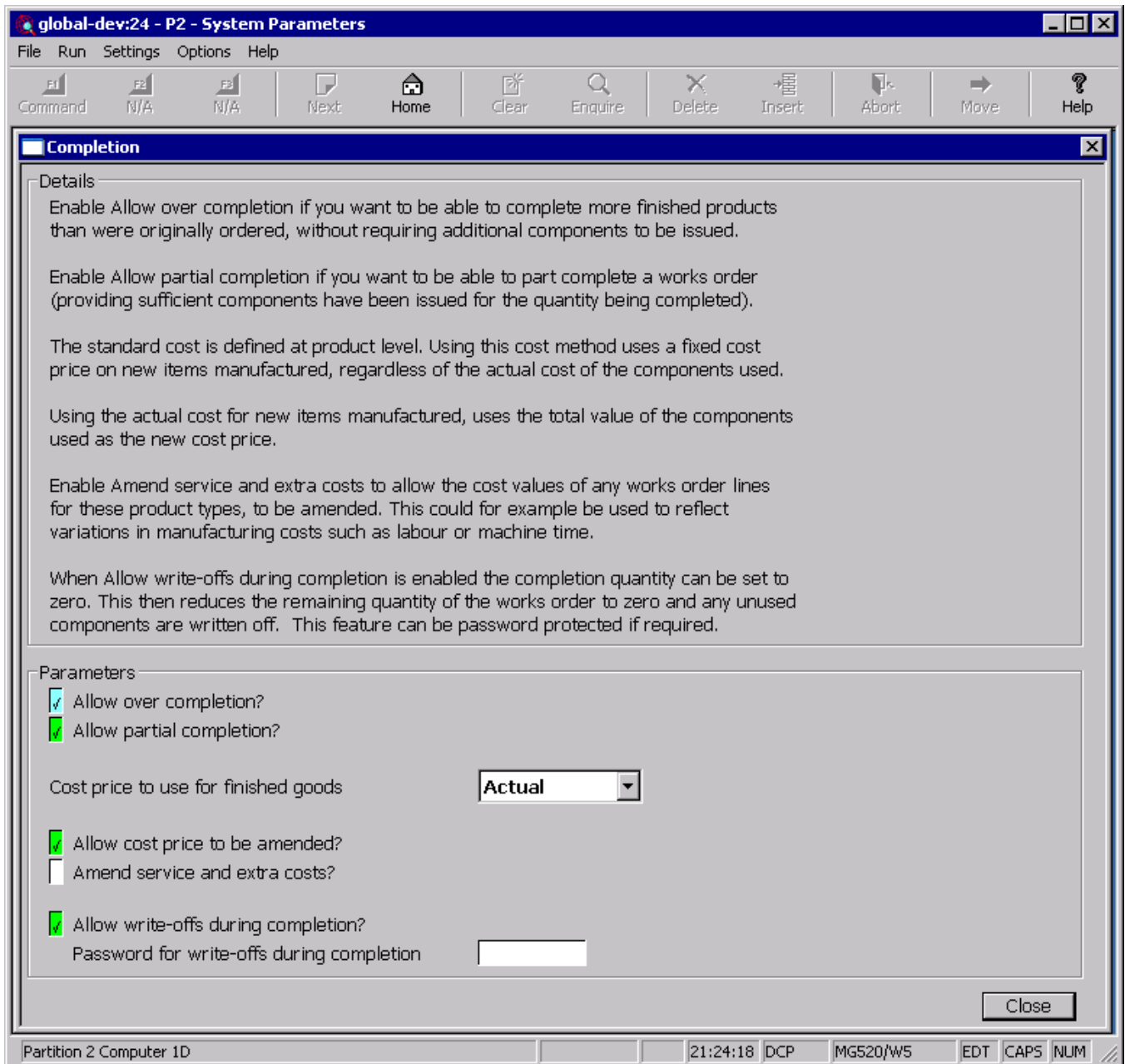
In addition new options to record a 'Write-off' profit centre and account have been added to the Manufacturer – GL Integration system parameters. If the remaining quantity of a works order is written off during completion and costs are posted to General Ledger, the cost value of all unused components is posted to General Ledger as follows:

CR Work in progress account.

DR Write-off account.

Author	DCP	
Project	ZV60_000031.doc	
Version	1.0	2 of 6

Manufacturer Parameters – Completion



Allow write-offs during completion

Set this to allow the completed quantity to be set to zero when completing a works order. This will then (after user confirmation) reduce the remaining quantity of the works order to zero and write-off any unused components.

Note The remaining quantity of a works order can only be written-off if all component stock has been issued.

Note If the remaining quantity of a works order is written off during completion and costs are posted to General Ledger, the cost value of all unused components is posted to General Ledger as follows:

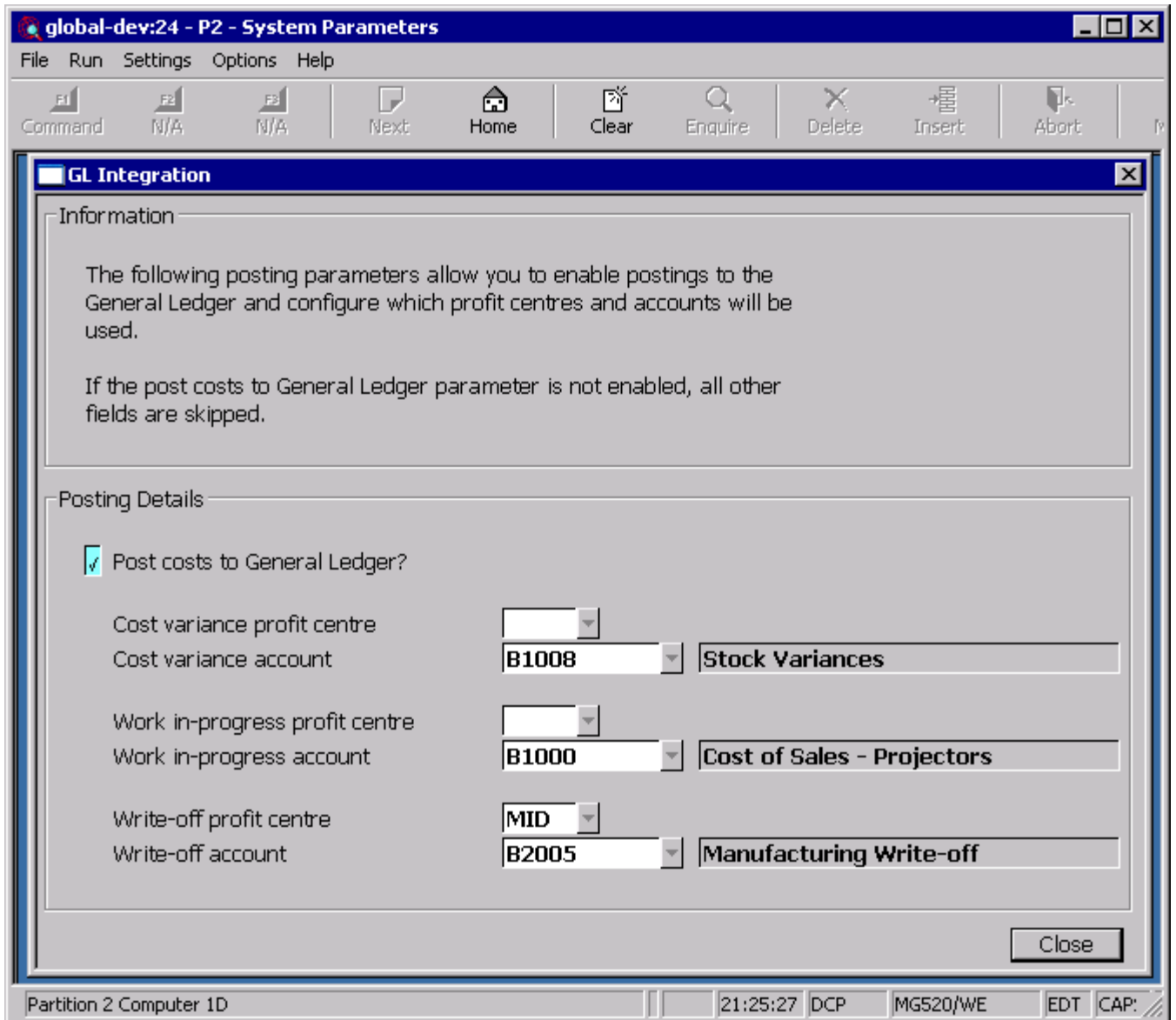
- CR Work in progress account.
- DR Write-off account.

Author	DCP		
Project	ZV60_000031.doc		
Version	1.0		3 of 6

Password for write-offs during completion

A password can be specified which (if set) must be entered by the operator before the remaining quantity of a works order can be written off. Leave this blank if no password is required.

Manufacturer Parameters – General Ledger Integration



Write-off profit centre

(Only if costs are posted to General Ledger) The profit centre to be used when posting the cost of written off components during works order completion. This may be left blank to use the profit centre from the location that the component stock is issued from. A search of valid profit centres is available.

Write-off account

(Only if costs are posted to General Ledger) The account to be used when posting the cost of written off components during works order completion to the general ledger. A search of valid general ledger accounts is available.

Author	DCP		
Project	ZV60_000031.doc		
Version	1.0		4 of 6

Note If the remaining quantity of a works order is written off during completion and costs are posted to General Ledger, the total cost value of all unused components is posted to General Ledger as follows:

- CR Work in progress account.
- DR Write-off account.

Order Completion

The screenshot shows a software window titled "global-dev:24 - P2 - Complete Works Order". The window has a menu bar with "File", "Run", "Settings", "Options", and "Help". Below the menu bar is a toolbar with icons for "Command", "N/A", "N/A", "Next", "Home", "Clear", "Enquire", "Delete", and "Insert". The main content area is divided into two sections: "Order details" and "Completion details".

Order details:

- Order No: W00000...
- Product: OHPKIT (Victor Portable OHP - Kit)
- Location: MID (Midlands and Wales)
- Required date: (empty)
- Original quantity: 5 (ITEM)

Completion details:

- Already completed: 3
- Remaining quantity: 2
- Completed quantity: 1

Buttons at the bottom include "Location", "Ok", and "Cancel". The status bar at the bottom shows "Partition 2 Computer 1D", "21:31:18 DCP", and "MG390/W4".

Completed quantity Enter the quantity of the product that is being completed. This will default to either the remaining quantity if all components have been issued, or based on the amount of stock issued, the maximum quantity that can be completed.

If the "Allow over completion" option is enabled, you may enter a quantity to complete greater than the remaining quantity to be completed.

If the "Allow write-offs during order completion" option is enabled and all components have been issued to the order, you may enter zero to reduce the remaining quantity of the works order to zero and write-off any unused components.

Providing sufficient components have been issued to complete the original order, the additional finished goods will be completed without the need for additional component stock.

You cannot over complete, unless all remaining items of the finished product are being completed.

Once a works order has been completed, i.e. you have confirmed this window, no further over completions are allowed.

Author	DCP		
Project	ZV60_000031.doc		
Version	1.0		5 of 6

Stock Accounting

There are a number of General Ledger accounts used by Manufacturer. Postings are only made to these accounts if costs are being posted to General Ledger.

Transactions in Manufacturer post automatically to these accounts if the option to post costs to General Ledger is selected.

There are five accounts set up, two in product group maintenance and three in Manufacturer Parameter Maintenance, each of which can be modified. These are:

Stock Value This is the balance sheet account representing the total value of stock for the product group at the location. When finished good are completed the values of the finished goods are posted here.

Work in-progress This is posted by component issue, when components are issued and again as finished goods are completed or written off, and represents the value of component stock currently being used in the manufacturing process.

Cost Variance This is posted to by works order completion when the cost of the finished items differs from the cost of the components used.

Write-off This is posted to by works order when components are written off.

Non-stocked goods issue This is posted to by works order completion. It holds the confirmed costs of all non-stocked, service and extra products used in the manufacturing process.

REPORT LAYOUT CHANGES

The works order report has been updated to print the written-off quantity in between the completed quantity and the remaining quantity.

Author	DCP		
Project	ZV60_000031.doc		
Version	1.0		6 of 6