

Global 3000 Design Specification Works Order - Component Wastage

Author	DCP	
Project	ZV60_000036.doc	
Version	1.0	1 of 8

INTRODUCTION

This service pack provides the ability to indicate that the quantity of a component shown in the assembly bill includes a specific percentage of wastage.

Global 3000 Manufacturer operates on the basis that the quantity required for each component specified in the assembly list includes any wastage that may occur during the manufacturing process.

This service pack introduces a new setting within the assembly list which allows users to specify that the quantity of the component required to manufacture the product (being manufactured) includes a percentage of wastage. The wastage percentage is recorded on each works order line and used within enquiries and reports.

The report layout changes are as follows:

- The works order report (when printed in works order sequence) has been updated to print the wastage percentage if works order lines are included.
- The bill details report has been updated to print the wastage percentage and quantity.
- The trial kitting report has been updated to print the estimated component cost.

Note: All wastage quantities and cost values shown on screen or on reports are approximate values and are shown for notation.

In addition Trial Kitting has been updated to show the estimated cost of components (if the system setting to display costs in order entry is set).

Author	DCP	
Project	ZV60_000036.doc	
Version	1.0	2 of 8

DOCUMENTATION CHANGES

Product Maintenance – Assembly Bill

global-dev:24 - P2 - Product Details

File Run Settings Options Help

Assembly Bill

Finished product
 Product: OHPKIT Victor Portable OHP - Kit Stocked in: ITEM

Component	Description	QC	Locn	Makes	One-off?	Quantity	Unit	Comments
AVPP2	Victor Design 2 Portable OHP		MID			1	ITEM	
ANTLBP8			MID			3	ITEM	
AVPP200			MID			1	ITEM	
GAL01			MID			1	ITEM	
GAL02			MID			1	ITEM	
GAL03			MID			1	ITEM	
GAL04			MID			1	ITEM	
STA01	Status Highlighter - Yellow		MID			1.00	BOX	
STA02	Status Highlighter - Blue		MID			2.00	BOX	

Date range: Start date: End date: Wastage: The quantity includes a wastage of 10.00 % Wastage qty: 0.10 BOX Used qty: 0.90 BOX

Search Copy bill QC Stage Assembly comments Component comments Amend Apply Close

Partition 2 Computer 1D 12:44:50 DCP PM410A/AB DSP NUM

The quantity includes a wastage of If the component quantity includes wastage enter the wastage percentage here.

Note The wastage percentage and all quantities and values derived from it are for notation purposes only.

Wastage quantity (Display only) The wastage quantity based on the component quantity and wastage percentage.

Used quantity (Display only) The component quantity minus the wastage quantity.

Note The wastage quantity and used quantity are always shown to a minimum of two decimal places.

Author	DCP
Project	ZV60_000036.doc
Version	1.0

Works Order Enquiries

global-dev:24 - P2 - Works Order Enquiries

File Run Settings Options Help

Works Order Lines

Order details

Order no: Quantity: ITEM

Product: Victor Portable OHP - Kit Completed:

Location: Midlands and Wales Written-off:

Required date: Estimated cost:

Cost to date:

Component	Description	QC	Locn	Required	Unit	Allocated	Issued
AVPP2	Victor Design 2 Portable OHP		MID	2	ITEM	0	0
ANTLBP8			MID	6	ITEM	0	0
AVPP200			MID	2	ITEM	0	0
GAL01			MID	2	ITEM	0	0
GAL02			MID	2	ITEM	0	0
GAL03			MID	2	ITEM	0	0
GAL04			MID	2	ITEM	0	0
STA01	Status Highlighter - Yellow		MID	2.00	BOX	0.00	1.00
STA02	Status Highlighter - Blue		MID	4.00	BOX	0.00	2.00

Works order

Allocates to: Line: Original works order:

Sales order

Sales order: Line: Account:

Order Comments | Queue Details | Finished Goods | Component Issue | QC Details | Close

Line Comments | Wastage Details

Partition 2 Computer 1D | 12:46:58 DCP | PM420W/W2 | DSP | NUM

Wastage (Only if the component quantity includes wastage) Select this to view the wastage percentage and approximate quantities for the current component line.

Author	DCP		
Project	ZV60_000036.doc		
Version	1.0		4 of 8

Works Order Entry

global-dev:24 - P2 - Works Order Entry

File Run Settings Options Help

Works Order Lines

Order Details

Order no: Quantity: ITEM

Product: Completed:

Location: Estimated cost:

Required date: Cost to date:

Component	Description	QC	Locn	Required	Unit	Allocated	Issued
AVPP2	Victor Design 2 Portable OHP		MID	2	ITEM	0	0
ANTLBP8			MID	6	ITEM	0	0
AVPP200			MID	2	ITEM	0	0
GAL01			MID	2	ITEM	0	0
GAL02			MID	2	ITEM	0	0
GAL03			MID	2	ITEM	0	0
GAL04			MID	2	ITEM	0	0
STA01	Status Highlighter - Yellow		MID	2.00	BOX	0.00	1.00
STA02	Status Highlighter - Blue		MID	4.00	BOX	0.00	2.00

Stock Levels

Book Stock: Allocated: Restricted: Free stock:

Partition 2 Computer 1D | 12:48:33 DCP | MG100/W1 | DSP | NUM

Wastage *(Only if the component quantity includes wastage)* Select this to view the wastage percentage and approximate quantities for the current component line.

Author	DCP	
Project	ZV60_000036.doc	
Version	1.0	5 of 8

Wastage Details

This window appears when you select the 'Wastage' button within works order entry or enquiries.

Purpose This window shows the wastage percentage and approximate quantities for the current component line.

The prompts are:

Quantity *(Display only)* The required component quantity.

Estimated cost *(Display only, depends on the relevant 'Display costs in...' setting)* The components estimated cost.

Cost to date *(Display only, depends on the relevant 'Display costs in...' setting)* The cost of issued components.

Quantity includes wastage of *(Display only)* The percentage of the required quantity that is wastage.

Wastage quantity *(Display only)* The approximate wastage quantity based on the component quantity and the wastage percentage.

Used quantity *(Display only)* The component quantity minus the wastage quantity.

Note The wastage quantity and used quantity are always shown to a minimum of two decimal places.

Author	DCP	
Project	ZV60_000036.doc	
Version	1.0	6 of 8

Estimated cost of wastage

(Display only, depends on the relevant 'Display costs in...' setting) The approximate cost of wastage based on the components estimated cost and the wastage percentage.

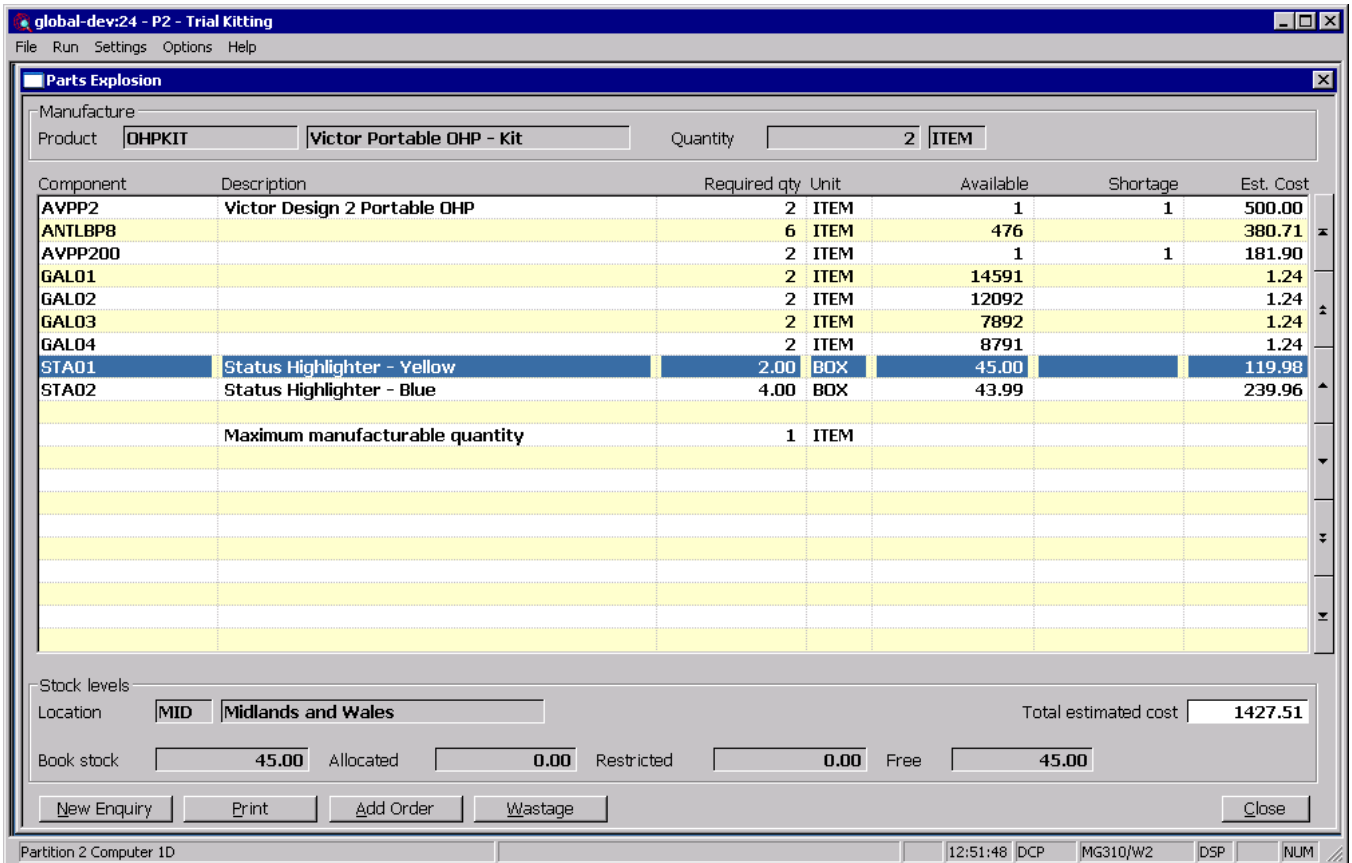
Wasted cost to date

(Display only, depends on the relevant 'Display costs in...' setting) The approximate cost of wastage based on the cost of issued components and the wastage percentage.

Note

All wastage quantities and cost values shown on screen or on reports are approximate values and are shown for notation.

Trial Kitting – Parts Explosion



Est. Cost

(Only if costs are displayed in order entry) The estimated cost for the current component line. The estimated cost is calculated based on the current cost price of the component, without taking stock availability into account.

Total estimated cost

(Only if costs are displayed in order entry) The total estimated cost of all component lines.

Wastage

(Only if the component quantity includes wastage) Select this to view the wastage percentage and approximate quantities for the current component line.

Author	DCP
Project	ZV60_000036.doc
Version	1.0

Trial Kitting - Wastage Details

This window appears when you select the 'Wastage' button within trial kitting.

Purpose This window shows the wastage percentage and approximate quantities for the current component line.

The prompts are:

Quantity *(Display only)* The required component quantity.

Estimated cost *(Only if costs are displayed in order entry)* The components estimated cost.

Quantity includes wastage of *(Display only)* The percentage of the required quantity that is wastage.

Wastage quantity *(Display only)* The approximate wastage quantity based on the component quantity and the wastage percentage.

Used quantity *(Display only)* The component quantity minus the wastage quantity.

Note The wastage quantity and used quantity are always shown to a minimum of two decimal places.

Estimated cost of wastage *(Only if costs are displayed in order entry)* The approximate cost of wastage based on the components estimated cost and the wastage percentage.

Note All wastage quantities and cost values shown on screen or on reports are approximate values and are shown for notation.

Author	DCP	
Project	ZV60_000036.doc	
Version	1.0	8 of 8