



Global 3000 Service Pack Note Manufacturing Stages

Author	DCP	
Project	ZV60_000059	
Version	1.0	1 of 7

INTRODUCTION

This service pack provides the ability to define stages within manufacturing process.

Definition: A stage is an individual step during the manufacturing process.

The changes are:

A new setting within Manufacturer System Parameters (Operating Options) is now available. It is labelled 'Use manufacturing stages?' and when set manufacturing stages can be defined via a new option labelled 'Manufacturing Stages' (available from the system maintenance menu)

Manufacturing stages are identified by stage id and description, further descriptive text in the form of comments can then be assigned to the stage id, for example describing how the manufacturing stage should be carried out.

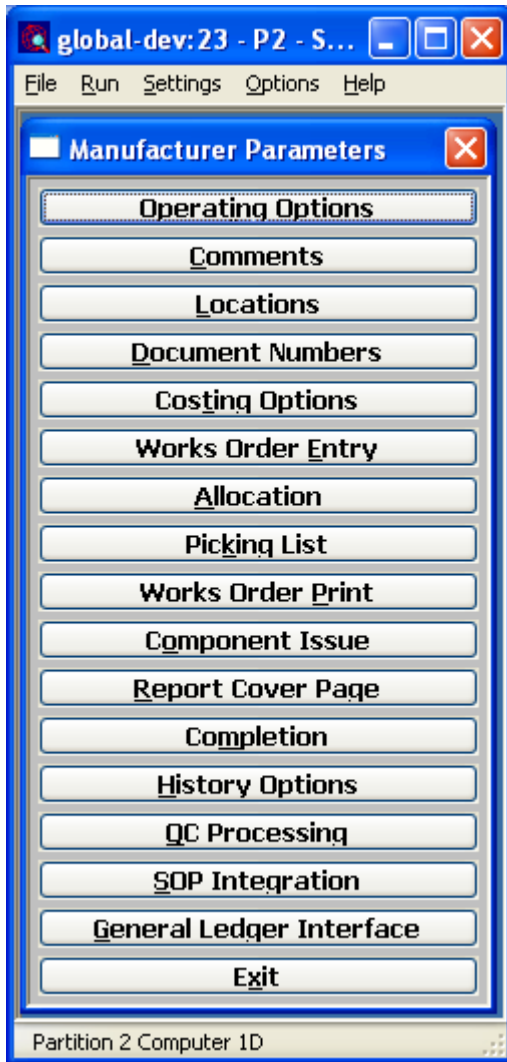
A second new system setting has been added within Manufacturer System Parameters (Operating options) labelled 'Include manufacturing stage comments on works order report?'. When this is set any stage comments are included following the stage id and its description.

Each component line within an assembly list can be assigned to one of the existing a manufacturing stages. On exit from the assembly list it is automatically re-sequenced by manufacturing stage (thus ensuring that works orders are generated, printed and picked in manufacturing stage sequence).

Author	DCP	
Project	ZV60_000059	
Version	1.0	2 of 7

DOCUMENTATION CHANGES

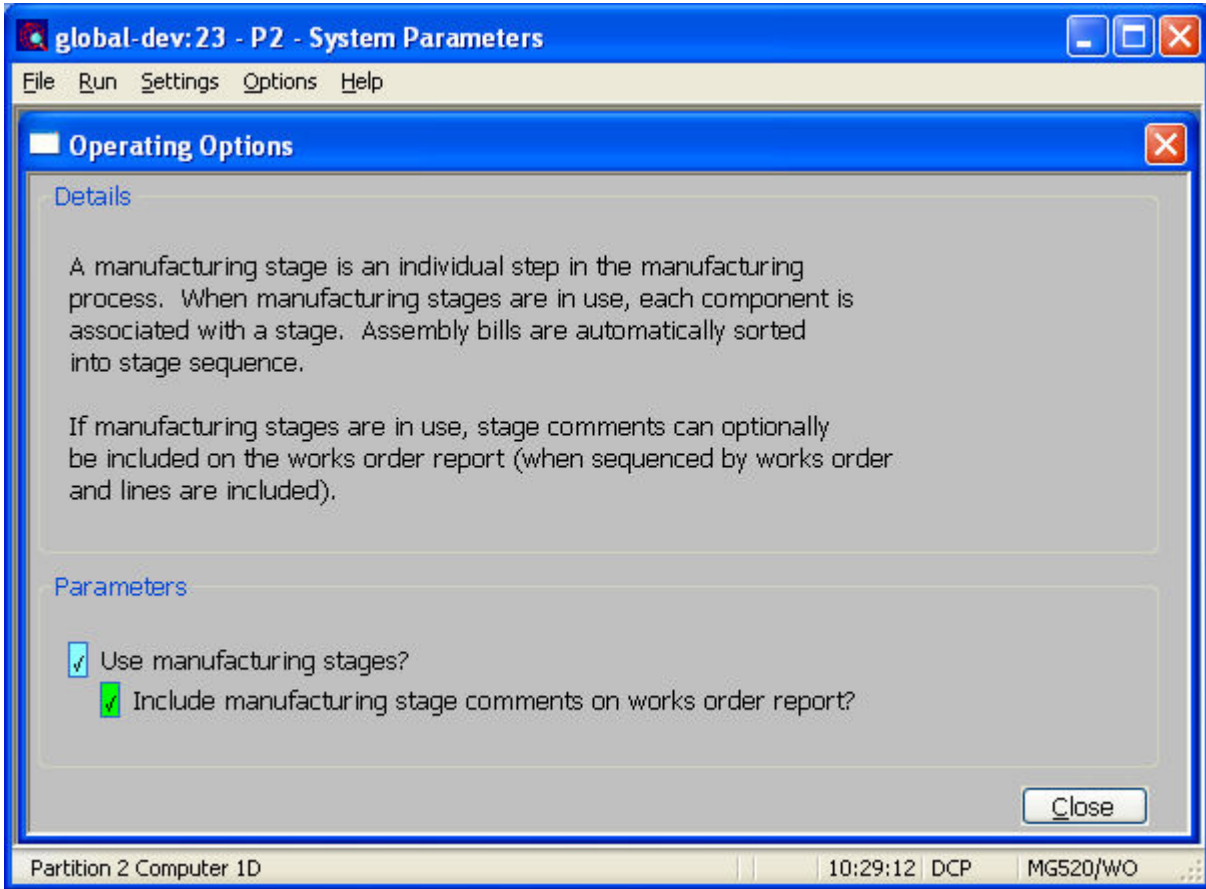
Manufacturer Parameters



Operating Options These settings control the operation of Manufacturer.

Author	DCP	
Project	ZV60_000059	
Version	1.0	3 of 7

Manufacturer Parameters – Operating Options



This window appears when you select operating Options from the Manufacturer Parameters menu.

Purpose These options control the use of various features and functions within Manufacturer.

The prompts are:

Use manufacturing stages? Set this to enable the use of manufacturing stages. A stage is an individual step during the manufacturing process.

Note When manufacturing stages are in use, assembly bills are automatically sorted in to stage sequence (when you exit the assembly bill maintenance window within product maintenance).

Include manufacturing stage comments on works order report? *(Only available at sites configured to use manufacturing stages).* When set manufacturing stage comments are included on the works order report. When manufacturing stage comments are included they appears immediately below the line printed indicating the start of a new manufacturing stage.

Note Manufacturing stage details are only included when the works order print is sequence by works order and includes line details.

Author	DCP	
Project	ZV60_000059	
Version	1.0	4 of 7

Product Maintenance – Assembly Bill

global-dev: 23 - P2 - Product Details

File Run Settings Options Help

Assembly Bill

Finished product
 Product: Stocked in: Method:

Component	Description	Stage	QC	Locn	Makes	One-off?	Quantity	Unit	Comments
GAL01	Galaxy Highlighter - Yellow	0001		MID			1	ITEM	
GAL03	Galaxy Highlighter - Green	0001		MID			1	ITEM	
GAL02	Galaxy Highlighter - Blue	0003		MID			1	ITEM	
GAL04	Galaxy Highlighter - Pink	0003		MID			1	ITEM	
GAL11	Wallets for Ass. colour pack	0004		MID			1	ITEM	

Date range: Start date: End date:

Wastage: The quantity includes a wastage of % Wastage qty: Used qty:

Search Copy Bill QC Stage Assembly Comments Component Comments Amend Apply Close Insert Delete

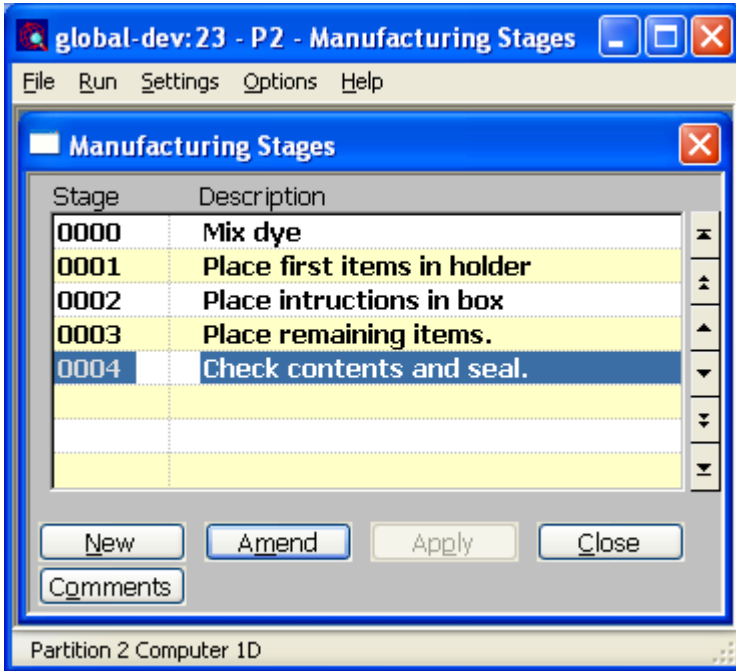
Partition 2 Computer 1D 10:30:40 DCP PM410A/AB DSP NUM

Stage (Only available at sites configured to use manufacturing stages). Enter the manufacturing stage (if applicable) at which the component is introduced. A search is available.

Note If the system is configured to use manufacturing stages the entire assembly bill is automatically sequenced by manufacturing stage on exit from this window. The re-sequencing has no effect on existing works orders.

Author	DCP	
Project	ZV60_000059	
Version	1.0	5 of 7

Manufacturing Stages



This window appears when you select Manufacturing Stages from the Manufacturer System Maintenance menu.

Purpose This allows the creation and maintenance of manufacturing stages. A manufacturing stage is an individual step during the manufacturing process.

The prompts are:

Stage This is a unique (four character) code used to identify the manufacturing stage.

Note When manufacturing stages are in use, assembly bills are automatically sorted in to stage sequence (when you exit the assembly bill maintenance window within product maintenance), for this reason it is advisable to use a numeric coding system for manufacturing stages.

Description This is the description of the manufacturing stage.

The buttons are:

Comments Press this to enter comments for the selected manufacturing stage, for example to describe fully how the stage is carried out. These comments can optionally be included on the works order report.

Author	DCP	
Project	ZV60_000059	
Version	1.0	6 of 7

Works Order Entry – Works Order Lines

Works Order Lines

Order Details

Order number: Quantity: ITEM

Product: Completed:

Location: Estimated cost:

Required date: Cost to date:

Component	Description	Stage	QC Locn	Required	Unit	Allocated	Issued
GAL01	Galaxy Highlighter - Yellow	0001	MID	2	ITEM	2	0
GAL03	Galaxy Highlighter - Green	0001	MID	2	ITEM	2	0
GAL02	Galaxy Highlighter - Blue	0003	MID	2	ITEM	2	0
GAL04	Galaxy Highlighter - Pink	0003	MID	2	ITEM	2	0
GAL11	Wallets for Ass. colour pack	0004	MID	2	ITEM	2	0

Stock Levels

Book stock: Allocated: Restricted: Free stock:

Buttons: Search, Explode, QC Line, Order Comments, Supply and Demand, Amend, Apply, Close, Line Comments, Wastage Details, Costs

Partition 2 Computer 1D | 10:35:52 DCP | MG100/W1 | DSP | CAPS NUM ...

Stage *(Only available at sites configured to use manufacturing stages, display only unless the amendment of works orders is allowed).* The manufacturing stage (if applicable) at which the component is introduced. A search is available.

Note Care must be taken when adding lines to works orders that use manufacturing stages to ensure that lines for the same stage are grouped together.

Author	DCP		
Project	ZV60_000059		
Version	1.0		7 of 7